

KENNEDY VALVE FLAP VALVES, IBBM

KENNEDY VALVE

Size Range	Working Pressure
4"–30"	Valves unseat and swing open under unseating pressure to release the outfall fluid and close when pressure is relieved

Available End Connections & Size Range Figure No.

Flanged End 4"–30" F-3012

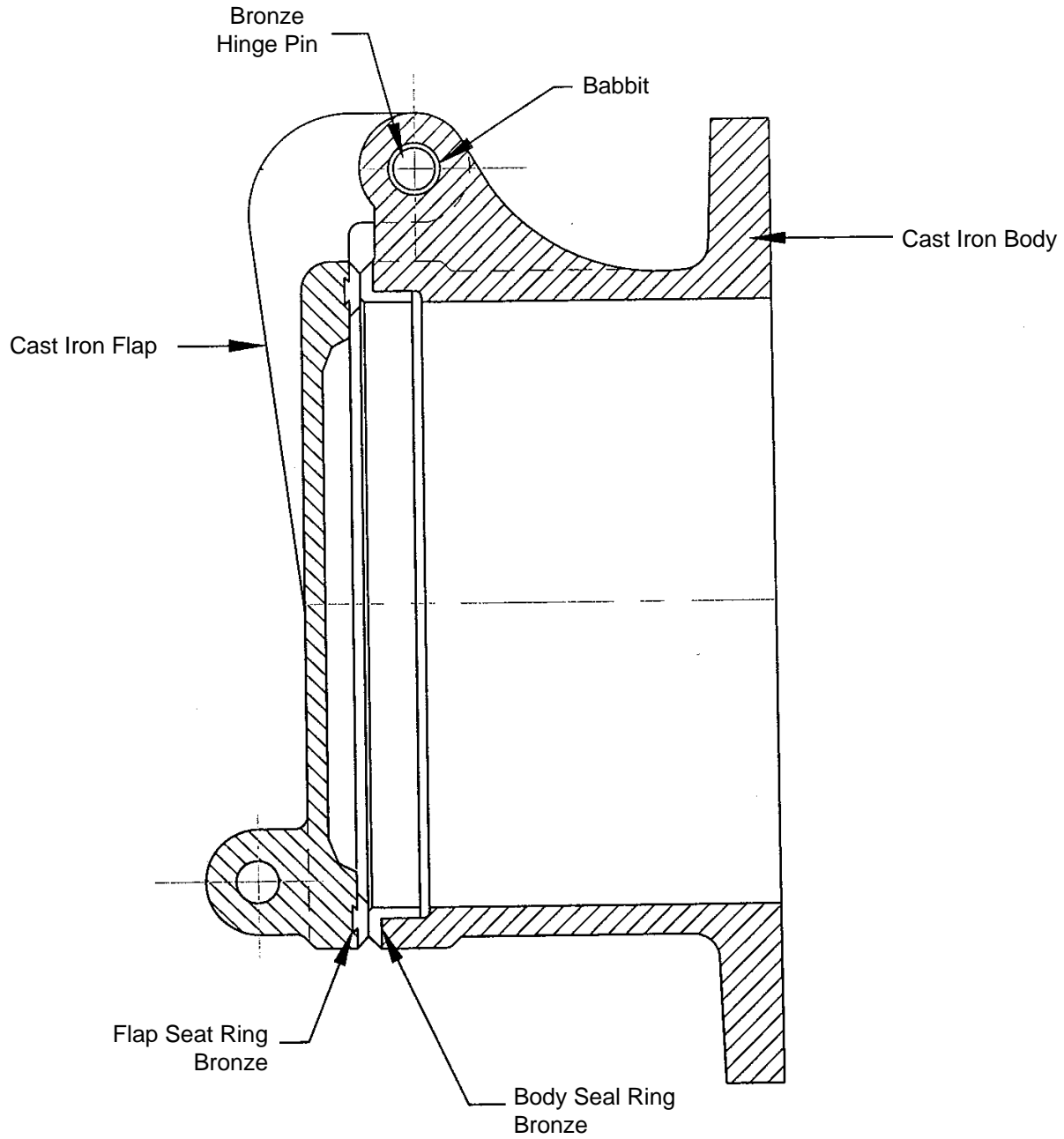
Accessories

None

**FLAP VALVES TYPICAL CROSS-SECTION
AND PARTS LIST**

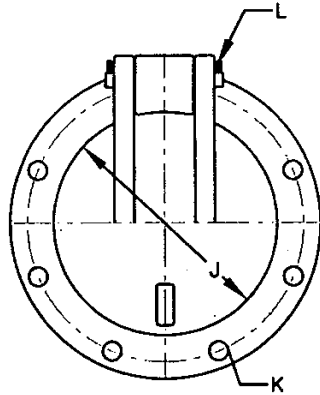
KENNEDY VALVE

FIG F-3012

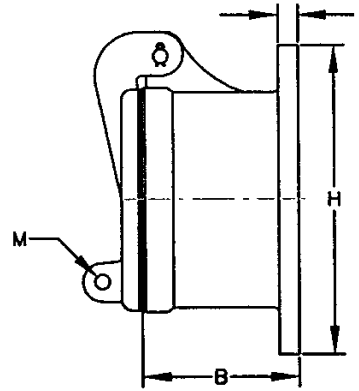


FLAP VALVES GENERAL DIMENSIONS

KENNEDY VALVE



End
View



Flanged
End
F-3012

DIMENSIONS - INCHES

VALVE SIZE - INCHES	4	6	8	10	12	14	16	18	20	24	30
B FACE OF SEAT TO FACE OF FLANGE	4	6	8	8	8	10	10	10	10	10	10
H DIAMETER OF END OF FLANGE	9	11	13-1/2	16	19	21	23-1/2	25	27-1/2	32	38-3/4
I THICKNESS OF END FLANGE	3/4	7/8	1	1	1-1/8	1-1/4	1-1/4	1-1/4	1-3/8	1-1/2	1-1/2
J DIAMETER OF BOLT CIRCLE	7-1/2	9-1/2	11-3/4	14-1/4	17	18-3/4	21-1/4	22-3/4	25	29-1/2	36
K NUMBER OF SIZE OF BOLTS	8-5/8	8-3/4	8-3/4	12-7/8	12-7/8	12-1	16-1	16-1-1/8	20-1-1/8	20-1-1/4	20-1-1/4
L DIAMETER OF FLAP PIN (BRONZE)	5/8	5/8	5/8	3/4	3/4	7/8	7/8	7/8	1	1	1-1/4
M DIAMETER OF FLAP LUG HOLE	5/8	5/8	5/8	3/4	3/4	7/8	7/8	7/8	1	1	1

**SUGGESTED SPECIFICATIONS
KENNEDY VALVE FLAP VALVES**

KENNEDY VALVE

Flap valves shall be of the circular port design with offset single pivoted hinge. They shall be of the iron body bronze mounted type and furnished with (flanged end, spigot end, hub end or as called for in the specifications or as indicated on plans).

The assembly shall consist of three parts: flap gate, body and hinge pin. The flap gate and body shall be case iron conforming to ASTM specifications A0126 Class B. The seats and hinge pin shall be furnished of bronze. The flap gate seat ring shall be rolled into a dove-tailed groove under pressure to make one inseparable unit. The body seat ring shall be threaded and screwed into place in the body. Both gate and body seat ring faces shall be machined to a smooth finish. Valves shall be manufactured by Kennedy Valve or approved equal.

KENNEDY VALVE SHEAR GATES, IBBM

KENNEDY VALVE

Size Range	Working Pressure
4"-30"	Recommended for use in lines of low seating pressure only.

Note: Seating pressure is pressure tending to push gate to seat.

Available End Connections & Size Range Figure No.

Flanged End Frame	4"-30"	F-3000
Standard End	4"-30"	F-3002

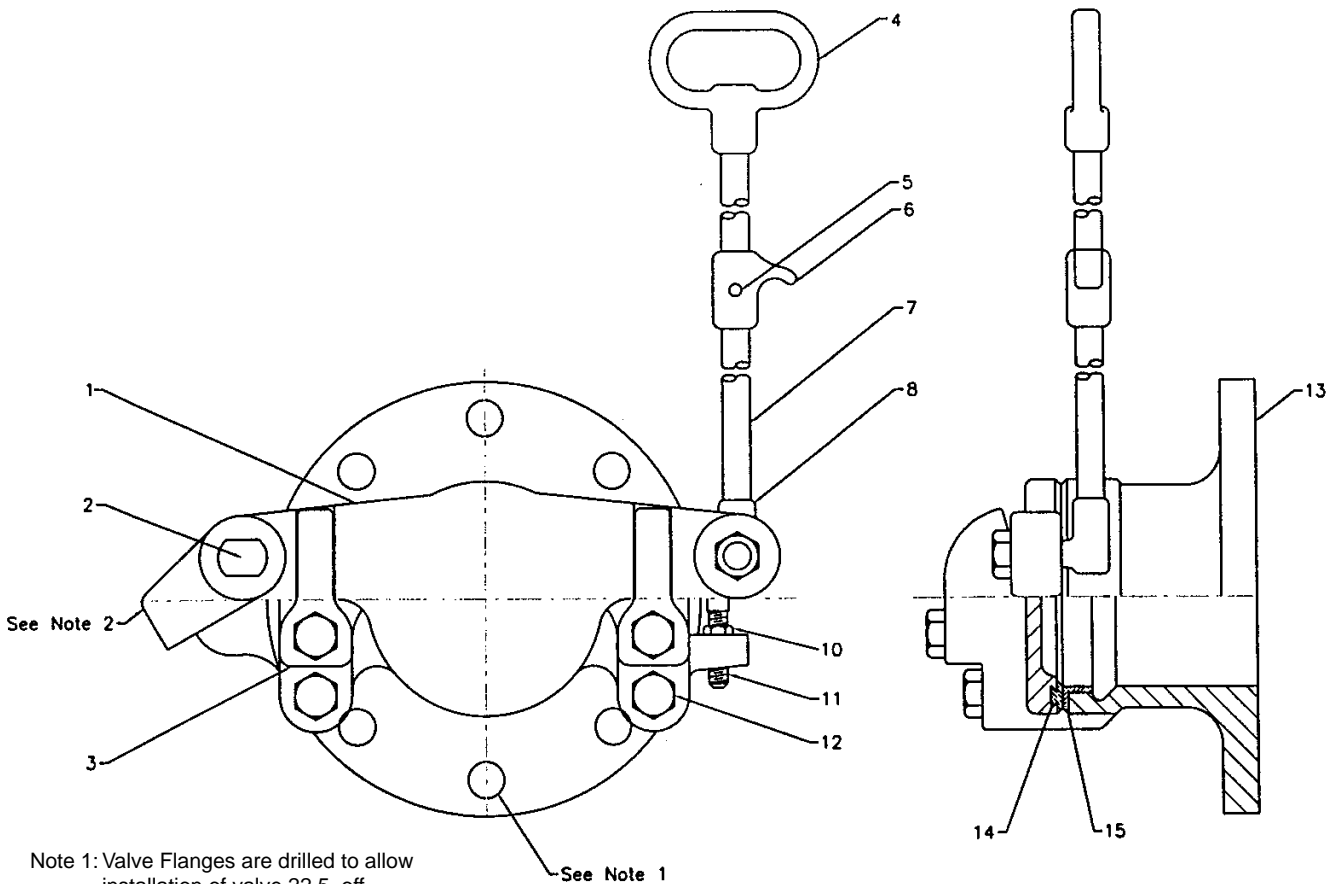
Note: Flanged End Frame and Standard Frame are faced and drilled to ANSI 125 pound template except on standard frame holes under wedges are omitted.

Accessories

Lifting Handle & Hooks

SHEAR GATES - TYPICAL CROSS-SECTION AND PARTS LIST

KENNEDY VALVE



Note 1: Valve Flanges are drilled to allow installation of valve 22.5 off horizontal centerline

See Note 1

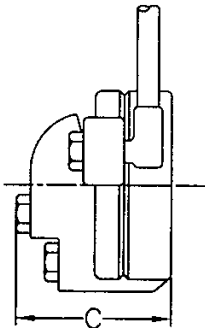
Note 2: Stop lugs furnished on 4" thru 12" only

DET.	QTY.	DESCRIPTION	MATERIAL
1	1	GATE	CAST IRON
2	1	HINGE PIN	BRONZE
3	2	WEDGE	BRONZE
4	1	HANDLE	MALLEABLE IRON
5	-	DRIV-PIN	STAINLESS STEEL
6	-	HOOK	MALLEABLE IRON
7	-	ROD	HOT ROLLED STEEL
8	1	TOE	MALLEABLE IRON
9	1	NUT	STL ZCCTD
10	1	NUT	STL ZCCTD
11	1	STUD	STL ZCCTD
12	4	CAPSCREW	STL ZCCTD
13	1	BODY	CAST IRON
14	1	GATE RING	BRONZE
15	1	BODY RING	BRONZE

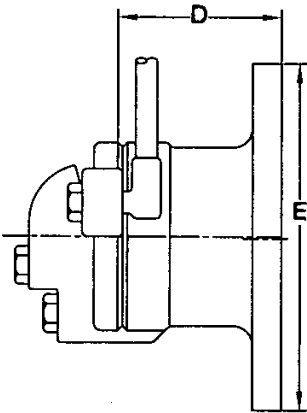
SHEAR GATES GENERAL DIMENSIONS

KENNEDY VALVE

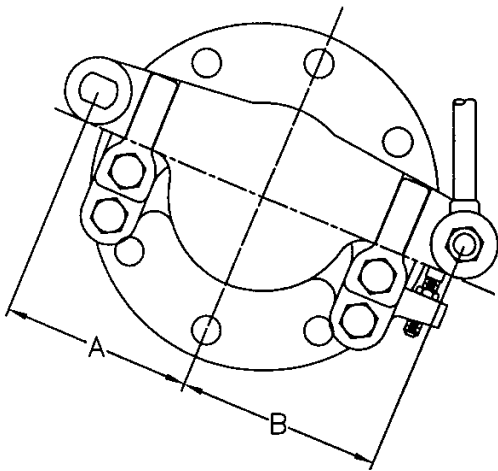
Standard
Frame
F-3002



Flanged
End
Frame
F-3000



End View
of Shear Gates
Frame



VALVE SIZE	4	6	8	10	12	14	16	18	20	24	30
A	5	6-1/4	7-5/8	9	10-1/4	11-3/8	14	14-5/8	16	18	22
B	5	6-1/4	7-5/8	9	10-1/4	11-1/2	14	15	16-1/2	18-1/2	22
C	4-1/2	4-3/4	4-3/4	4-7/8	5	5-7/8	5-1/2	5-3/4	6-1/4	7-5/8	9-1/2
D	4	6	8	8	8	8-1/4	8-1/4	8-1/4	9-7/8	10-5/8	13-1/4
E	9	11	13-1/2	16	19	21	23-1/2	25	27-1/2	32	38-3/4

**SUGGESTED SPECIFICATIONS
KENNEDY VALVE SHEAR GATES**

KENNEDY VALVE

Shear gates shall be full opening, circular port, iron body bronze mounted design and furnished with (flanged end, standard frame, hub end, spigot end or as called for in specifications or as indicated on plans).

The body (frame), gate and wedges shall be of case iron conforming to ASTM specification A-126 Class B.

The valve shall be furnished with two (2) wedges bolted to the body so they can easily be removed and replaced due to wear.

The gate shall be sturdily proportioned and pivot on a solid bronze hinge pin.

The bronze gate (seat) ring shall be rolled into a dovetailed groove under pressure to make one inseparable unit. The bronze gate ring face shall be machined to a smooth finish. The body seat ring shall be bronze, threaded and screwed into place and the face machined to a smooth finish.

All sizes of shear gates shall be furnished with an adjustable stop on wedge to prevent jamming gate to seat.

Shear gates shall be furnished with lifting handles measuring (ft. inches) overall length or as indicated on plans.

KENNEDY VALVE MUD VALVES, IBBM**KENNEDY VALVE**

Size Range	Working Pressure
4"–24"	Mud valves are recommended for use in lines of low seating or unseating pressures only.

Available in either non-rising, rising or sliding stem.

Available End Connections & Size Range

Flanged End, Non-Rising Stem 4"–24"
 Flanged End, Rising Stem 4"–24"

Figure No.

F-3075
 F-3085

Note: Flanged ends are faced and drilled to ANSI 125 pound template except holes under where attached to flange are omitted.

Accessories

Handwheels
 2" Square Operating Nut
 Floorstands (NRS and RS)
 *Extension Stems

"T" Handles
 Stem Guides
 Floor Boxes

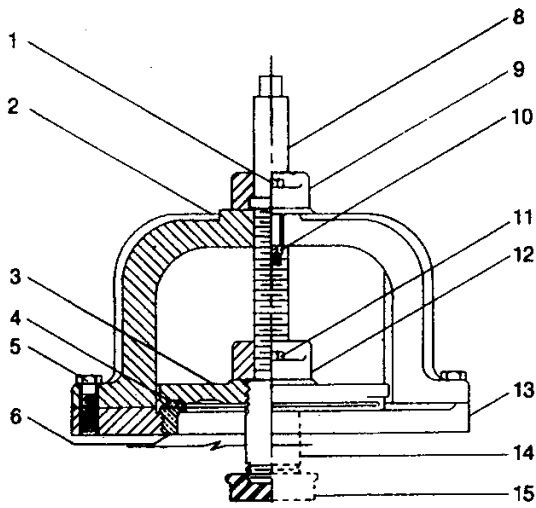
*Note: Consult Factory Rep. or Dist. for material other than cold rolled steel.

*Note: Call Factory for special applications.

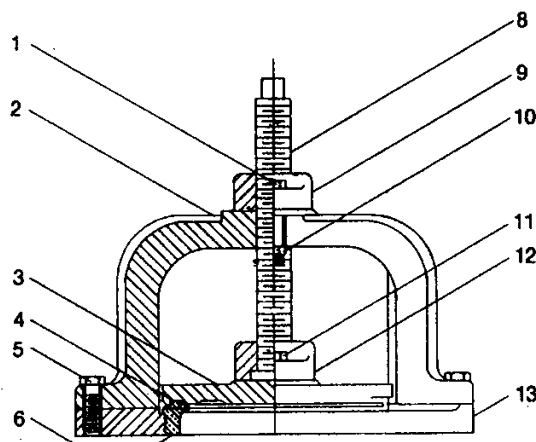
MUD VALVES TYPICAL CROSS-SECTION AND PARTS LIST

KENNEDY VALVE

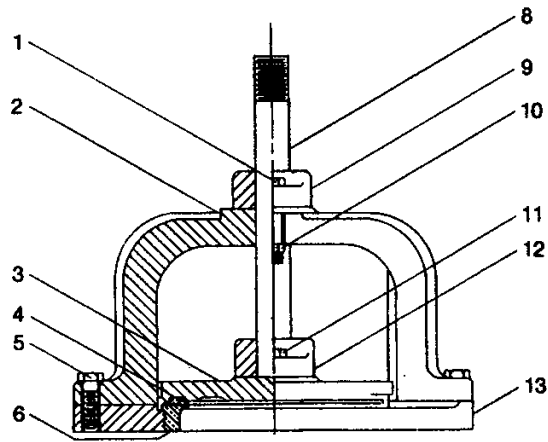
DET.	QTY.	DESCRIPTION	MATERIAL
1	2	CAPSCREW	STL ZCCTD
2	1	YOKE	CAST IRON
3	1	GATE	CAST IRON
4	1	GATE RING	BRONZE
5	4	CAPSCREW	STL ZCCTD
6	1	BODY RING	BRONZE
8	1	STEM	BRONZE
9	1	YOKE PLATE	CAST IRON
10	2	NUT (HEX)	STL ZCCTD
11	2	CAPSCREW	STL ZCCTD
12	1	GATE PLATE	CAST IRON
13	1	BODY	CAST IRON
14	1	STEM COVER	STEEL
15	1	STEM COVER CAP	STEEL



Non-Rising Stem



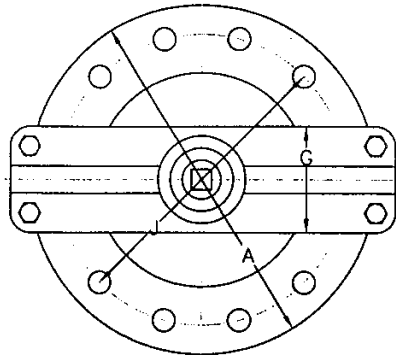
Rising Stem



Sliding Stem

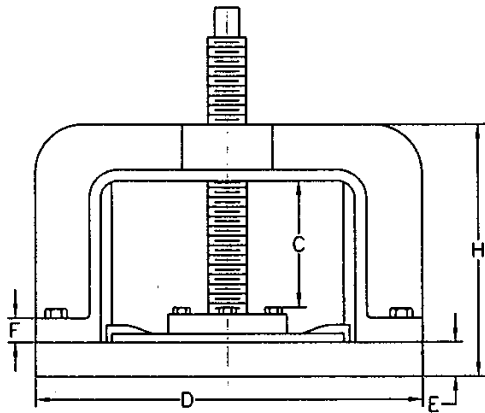
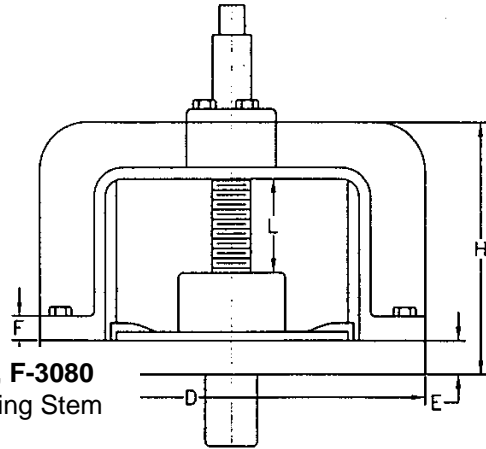
MUD VALVES GENERAL DIMENSIONS

KENNEDY VALVE

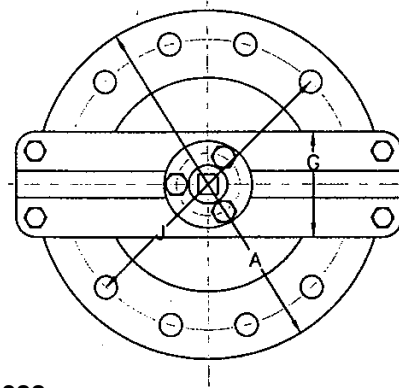


F-3075, F-3080
Non-Rising Stem

Non-Rising Stem



F-3085, F-3088
Rising Stem



DIMENSIONS - INCHES

VALVE SIZE - INCHES	4	6	8	10	12	14	16	18	20	24
A DIAMETER OF BODY FLANGE	9	11	13-1/2	16	19	21	23-1/2	25	27-1/2	32
C TRAVEL OF GATE (RISING STEM)	1-7/8	2-1/2	4-1/2	4-1/2	4-3/4	6-5/8	7	8-11/16	8-5/8	10-3/8
D OVERALL WIDTH AT YOKE	10	12-1/4	14-1/2	17	19-3/4	23	25-3/4	29	29-1/2	37
E THICKNESS OF BODY FLANGE	7/8	7/8	7/8	7/8	1	1-1/4	1-1/4	1-1/4	1-1/2	1-7/8
F THICKNESS OF YOKE FLANGE	5/8	3/4	7/8	7/8	1	1-1/4	1-3/8	1-1/2	1-3/8	1-5/8
G WIDTH OF YOKE	2-1/4	2-1/2	3	3-1/2	4	6	6	6-1/8	7	7
H HEIGHT OF YOKE	5-5/8	6	6	8	9	11-1/8	14	15-1/2	16-7/8	20
J DIAMETER OF BOLT CIRCLE	7-1/2	9-1/2	11-3/4	14-1/4	17	18-3/4	21-1/4	22-3/4	25	29-1/2
L TRAVEL OF GATE (NON-RISING)	1-7/8	2-1/2	4-12	4-12	4-3/4	5-1/8	5	5-1/4	6-1/2	10

**SUGGESTED SPECIFICATIONS
KENNEDY VALVE MUD VALVES**

KENNEDY VALVE

Mud valves shall be of the iron body, bronze mounted type with (rising, non-rising, sliding) stems, (Flanged, spigot) ends, (extension stem, 2" square operating nut, handwheel) and open by turning (left, right).

The frame, yoke and gate shall be sturdily proportioned for strength and rigidity and be of cast iron conforming to ASTM specifications A126 Class B.

The stem, stem nut and seats shall be bronze. The stem shall be machined with accurately cut modified acme threads.

The gate seat shall be rolled into a dovetailed groove under pressure to make one inseparable unit. The body (frame) seat ring shall be threaded and screwed into place in the frame.

Both gate and body seat ring faces shall be machined to a smooth finish.

Mud valves shall be manufactured by Kennedy Valve or approved equal.



Kennedy Valve

A DIVISION OF McWANE, INC.

www.kennedyvalve.com

1021 E. Water Street • Elmira, New York 14901
P.O. Box 981
PHONE: (607) 734-2211 • FAX: 1-800-952-4771