

# Kennedy Iron Swing Check Valves UL/FM

*Underwriters' / Factory Mutual  
Underwriters' Canada*

Kennedy Swing Check Valves are for use where backflow is to be prevented. The disc is designed with ample tolerances to compensate for seat ring wear. The spinning action of the disc creates a regrinding effect that cleans the seat ring of foreign particles. The disc is also self-adjusting. All moving parts of these valves are bronze to bronze, minimizing wear and corrosion problems.

These valves are listed by Underwriters' Laboratories and approved by Factory Mutual Fire Research Corp. and have body markings "UL" and "◀ FM ▶" signifying the listing and approval.

**Working Pressure:** Cold Water, Non-Shock, 175 Lbs. (2½"-12")

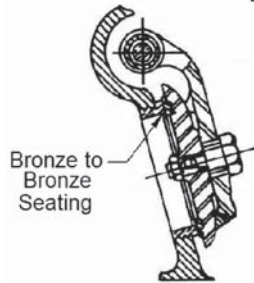
**Hydrostatic Test Pressure:** Seat and shell, 350 PSI. (2½"-12")

**Construction:** Bronze Mounted with Bronze Disc or Resilient Disc

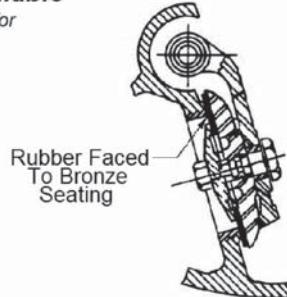


**Two Styles Available**

See Next Page for Further Detail



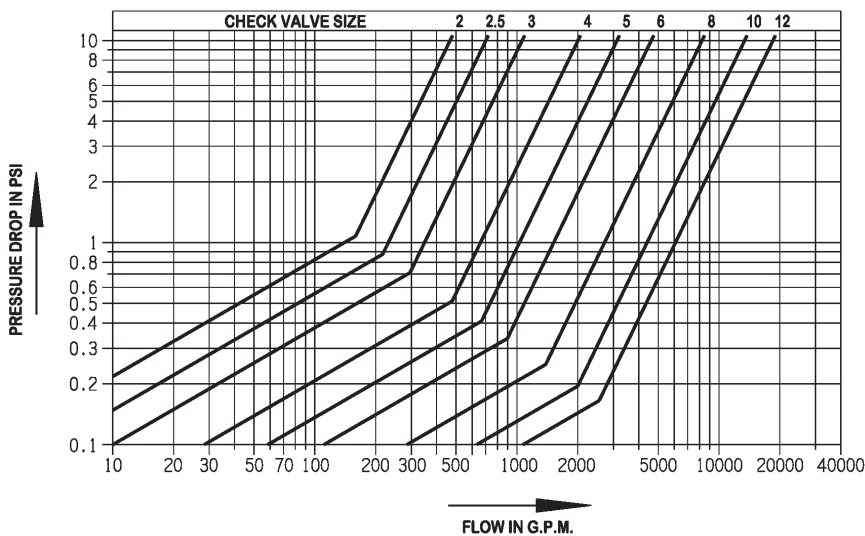
**FIG. 1126  
BRONZE DISC  
FLANGED ENDS  
SIZE: 2½" THRU 12"**



**FIG. 1126A  
RESILIENT DISC  
FLANGED ENDS  
SIZE: 2½" THRU 12"**

**FLOW VERSUS PRESSURE DROP**

Data Representative of Kennedy Figure 1126 and 1126A Swing Check Valves



# Iron Swing Check Valves

Underwriters'/Factory Mutual/ULC  
APPROVED BY N.Y.C. BOARD OF STDS.

- Bronze Mounted with:
- Rubber Faced Disc  
–or–
- Bronze Faced Disc

**Working Pressures:** 2 1/2"-12" Cold Water, Non-Shock, 175 II

**Approvals:** UL/FM/ULC - 2 1/2"-12" Fig. 1126 and 1126A

**Factory Test Pressure:** Seat and Shell 350 PSI

**End Flange Drilling:** 125 LB American Standard

Work with Page 15-9

Common Parts: Use with all Figures

Part No.	Description	Material	A.S.T.M. Spec.
1	Cap Bolts	Stainless Steel 18-8	F593C
2	Cap	Cast Iron	A-126 Class B
3	"O" Ring	Buna "N"	
5	Body	Cast Iron	A-126 Class B
6	Hinge Pin	Stainless Steel	A-276 (304)
7	Hinge Bushings	Sint. Bronze	+ 4" Thru 12"
12	Seat Ring	Bronze	B-62
13	Drain Plug	Steel Socket 3/4" Pipe Plug@	A-126 Class B
28	Side Plugs with O-Ring 28A	Bronze Rod	B-16
28A	O-Ring for Side Plug 28	Buna "N"	

+Cannot be ordered separately, only with hinge.  
@9/16 Allen Wrench Req'd for Removal/Installation

Fig. 1126 Bronze Disc Assembly Sizes 2 1/2" and 3"

8	Hinge	Mang. Bronze	B584 Alloy C864
10	Disc Nut	Bronze Rod	B-16
11	Disc	Bronze	B-62

Fig. 1126 Bronze Faced Disc Assembly Sizes 4" through 14"

14	"O" Rings	Buna "N"	
15	Disc Bolt	Bronze Rod	B-16
17	Hinge	Malleable Iron	A-47
18	Disc	Malleable Iron	A-47
19	Disc Ring	Bronze	B-62*

\*Cannot be ordered separately.

Fig. 1126A Rubber Faced Disc Sizes 2 1/2" and 3"

29	Disc Holder	Bronze	B-62
21	Disc	4,6 EPDM	Rubber
30	Disc Plate	Bronze Rod	B-16
24	Disc Nut (2 Req'd)	Bronze Rod	B-16
27	Disc Bolt Bushing	Sint. Bronze	+

+Cannot be ordered separately.

Fig. 1126A Rubber Faced Disc Sizes 4" through 12"

20	Disc Holder	Malleable Iron	A-47
21	Disc	8-12 Nitrile (Buna N) Rubber	
22	Disc Plate	Bronze	B-62
23	Disc Bolt	Bronze Rod	B-16
24	Disc Nut (1 Req'd)	Bronze Rod	B-16
25	"O" Rings	Buna "N"	
27	Disc Bolt Bushing	Sint. Bronze	+

+Cannot be ordered separately, only with hinge.

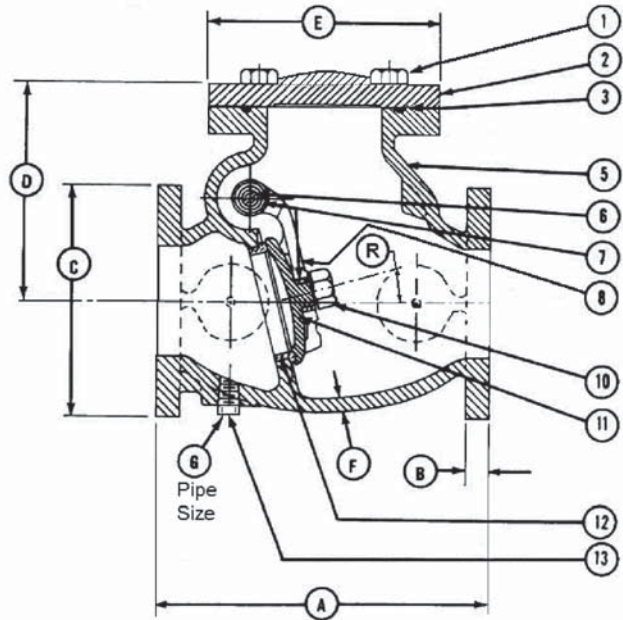
## Common Reference Dimensions

SIZE	A	B	C	D	E	F	G	R
2 1/2	10	1 1/16	7	6 7/16	7	1 3/32	3/4	10.0
3	10 1/4	3/4	7 1/2	6 9/8	7 1/2	7/16	3/4	8.0
4	13	1 9/16	9	8 7/16	9	1/2	3/4	8.0
6	16	1	11	10 1/8	11	5/8	3/4	12.0
8	19	1 1/8	13 1/2	11 7/8	13 1/2	3/4	3/4	15.0
10	22	1 9/16	16	13 9/16	16 3/4	1 1/16	3/4	15.0
12	26	1 1/4	19	15 9/16	19	7/8	3/4	15.0

## WEIGHT - POUNDS

SIZE	2 1/2"	3"	4"	5"	6"	8"	10"	12"
FIG. 126	52	62	114	145	193	319	475	680
FIG. 126A	53	62	117	145	196	322	480	685

FIG. 1126 - FIG. 1126A  
Flanged Ends



Common Parts, Dimensions, and Fig. 1126 2.5" & 3" Internal Components

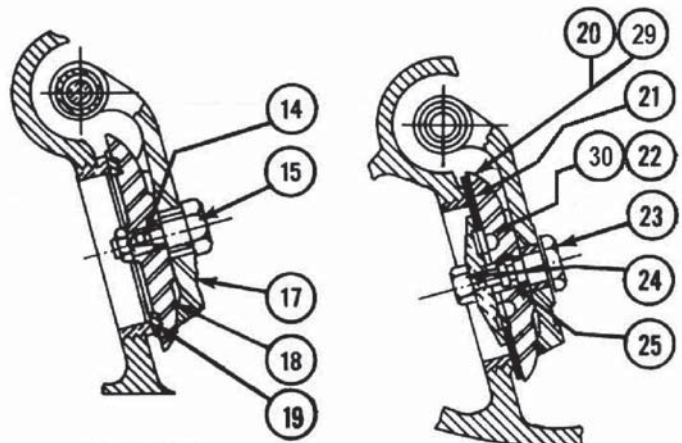


FIG. 1126  
Internal Components  
Bronze Faced Disc  
4" through 12"

FIG. 1126A  
Internal Components  
Rubber Faced Disc

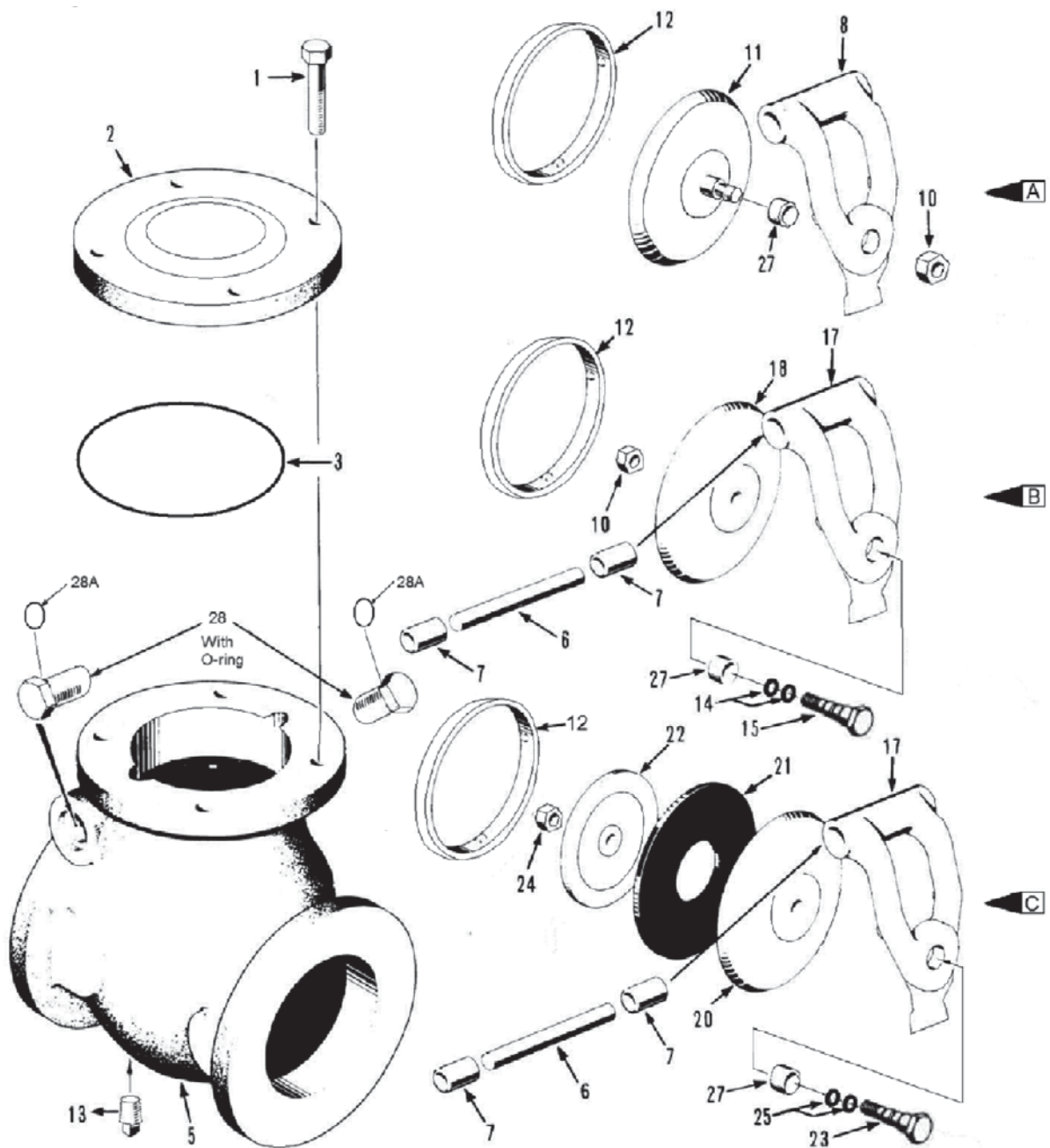
# Iron Swing Check Valves

*Underwriters' / Factory Mutual  
Underwriters' Canada*

- Bronze Mounted with  
Rubber Faced Disc or Bronze Faced Disc

## Exploded View

- A** FIG. 1126 Bronze Disc Assembly, Size 2 1/2" and 3" Center
  - B** FIG. 1126 Bronze Faced Disc Assembly, Size 4" thru 12" Bottom
  - C** FIG. 1126A Rubber Disc Assembly, Size 4" thru 12"
  - FIG. 1126A Rubber Disc Assembly, Size 2 1/2" and 3" - Not Shown
- See Page 15-8 for Detail. Also see Page 15-8 for Number Identification

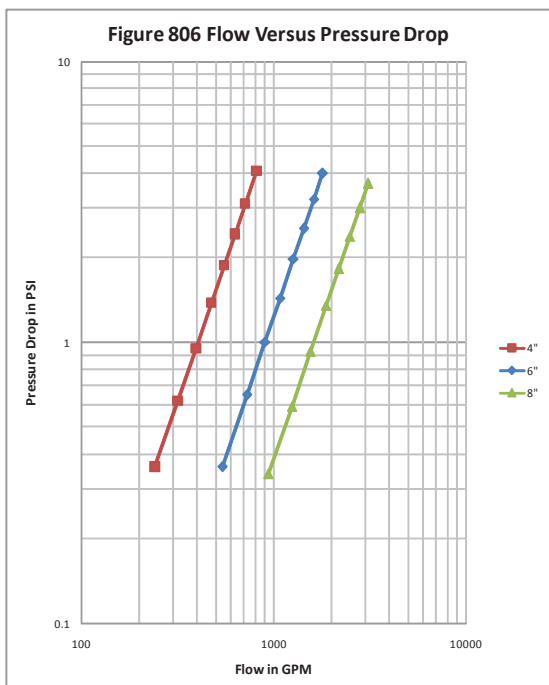
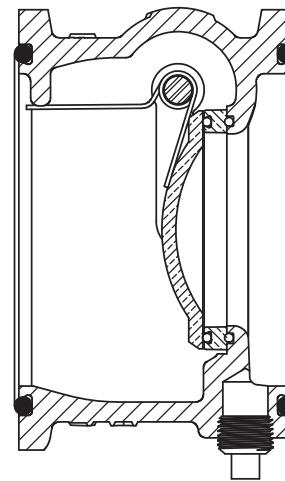
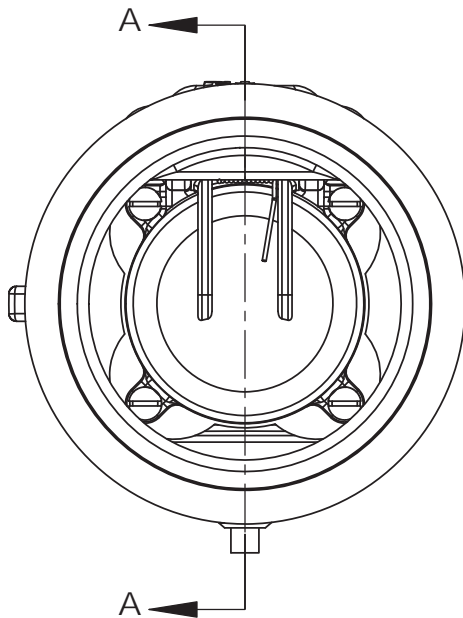
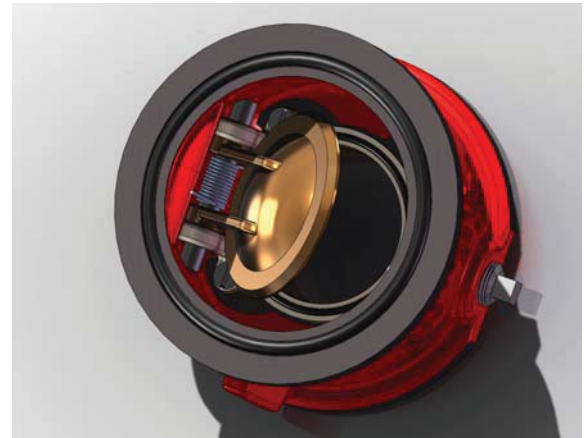


# KENNEDY VALVE FIGURE 806 WAFER CHECK VALVES

UL/ULC Listed and FM Approved

300 psi rated working pressure, non-shock  
Hydrostatically tested at the factory to  
600 psi, seat and shell

- Sizes 4, 6, and 8 inch
- Ductile Iron Body
- Aluminum Bronze Clapper and Seat Ring
- Resilient Seating
- "O" Ring End Seals
- Stainless Steel Spring and Clapper Pin
- All Components Lead Free
- Fusion Bonded Epoxy Coated Interior and Exterior

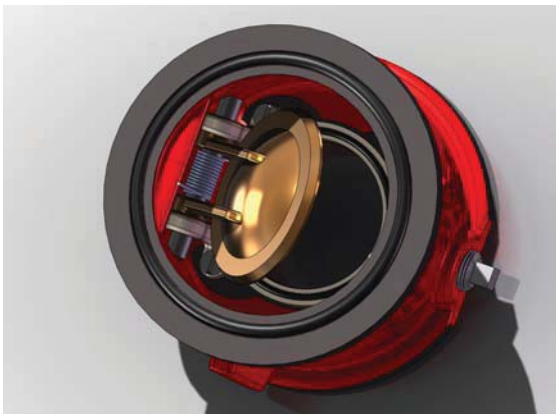
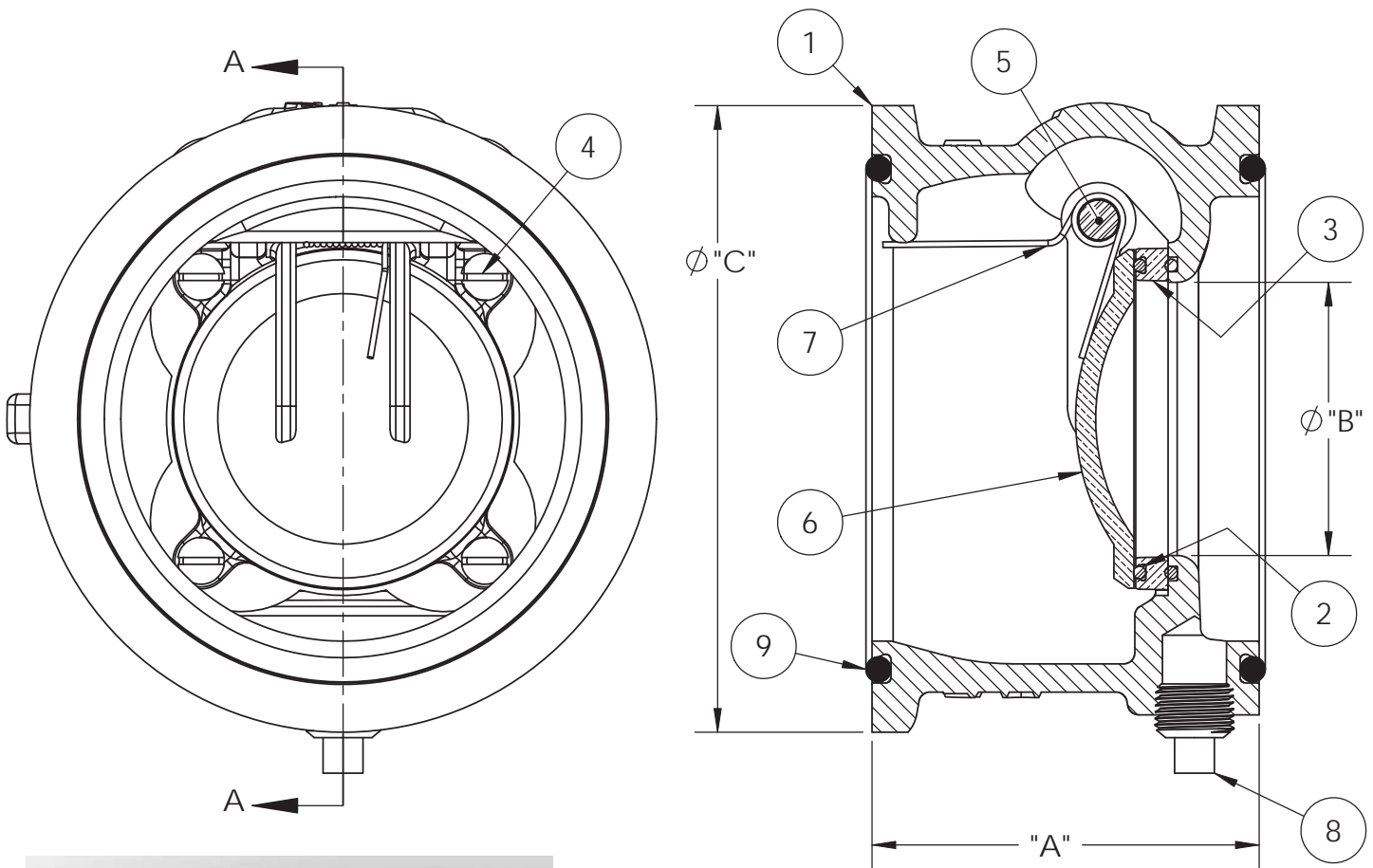


Compact, for installation between standard ASME B16.1 class 125 or class 150 flanges.  
Mounting between class 250/300 flanges requires use of spacers.  
Kennedy WAFER CHECK VALVES have spring loaded aluminum bronze clappers, resilient seating, and utilize "O" rings rather than gaskets for end seals.

Flow Verses Pressure Drop Data from  
Utah Water Research Laboratory  
Report No. 2040 and 2073

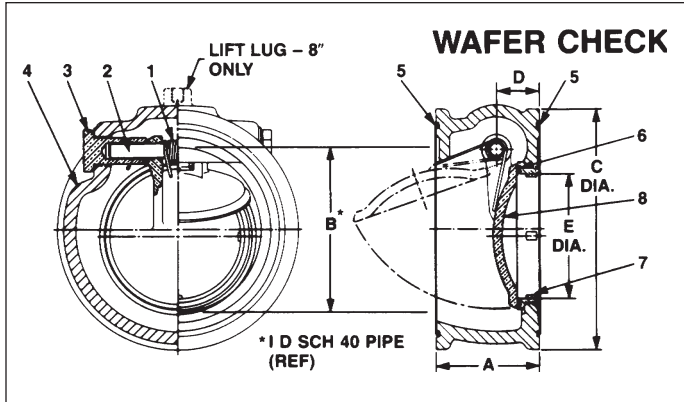
# Wafer Check Valves Technical/Dimensional Data

ITEM NO.	DESCRIPTION	MATERIAL	QTY.
1	Body	Ductile Iron, ASTM A536 grade 70-50-5	1
2	Oring	Buna-N	2
3	Seat Ring	Aluminum Bronze, ASTM B806 C95400/C95500	1
4	Screw	18-8 Stainless Steel	4 (8" SIZE HAS 6)
5	Pin	18-8 Stainless Steel	1
6	Clapper	Aluminum Bronze, ASTM B806 C95400/C95500	1
7	Spring	302 Stainless Steel	1
8	1/2" NPT Pipe Plug	Steel	1 (4" SIZE ONLY)
9	Oring	Buna-N	2



SIZE	"A"	"B"	"C"	WT lbs
4"	4.25	3.00	6.88	12
6"	4.25	4.50	8.75	18
8"	4.25	6.00	11.00	26

# Wafer Check Valves Technical/Dimensional Data



Size	A	B	C	D	E
4"	3.75	4.03	6.87	1.34	3.03
6"	3.75	6.06	8.75	1.53	4.56
8"	4.25	7.98	11.00	1.92	6.00

BODY MARKINGS	
(ONE SIDE)	(OPPOSITE SIDE)
SIZE-300	KENNEDY
06	FLANGE

Part No.	Qty.	Description	Material & ASTM Spec.
1	1	Spring	Stainless Steel, A-313 (302)
2	1	Hinge Pin	Stainless Steel, A-276 (304/316)
3	2	Side Plug	Bronze
4	1	Body	Cast Iron A-126 Class B
5	2	O-Ring	Syn. Rubber
6*	1	Seal	Syn. Rubber
7*	1	Seat Ring	Bronze
8	1	Clipper	Bronze

\* Denotes part is only available as part of an assembly.

## Features



### Wafer Check Valve-UL/FM

- Short laying length.
- Spring loaded for more effective control of water hammer.
- Stainless steel spring.
- Resilient seating.
- Easy maintenance with a minimum number of parts.
- Built-in O-Ring flange seals - gaskets *not required*.
- Mounts between standard ANSI B 16.1/125 lb. flanges. Mounting between 250 lb. flanges requires use of spacers.
- May be installed in a vertical line with flow up or down.
- Testing
  - Test Pressure - Seat and Shell - 600 PSI
  - Working Pressure - Non-Shock - 300 PSI
- Figure #706

# Kennedy Wafer Check Valves

UL-FM/A.W.W.A/ULC

APPROVED BY N.Y.C. BOARD OF STDS.

- Sizes 4, 6 & 8 Inch
- Iron Body
- Bronze Disc
- Resilient Seating
- "O" Ring End Seals

**Working Pressure:**  
300 PSI, Non-Shock

Compact, for installation between standard flanges, Kennedy WAFER CHECK VALVES have spring loaded bronze discs, resilient seating, and utilize "O" rings rather than gaskets for end seals.

HYDROSTATIC TEST PRESSURE: Seat and Shell - 600 P.S.I.

UL LISTED/FM APPROVED  
ULC LISTED

## FLOW VERSUS PRESSURE DROP

Data Representative of Kennedy Figure 706 Wafer Check Valves

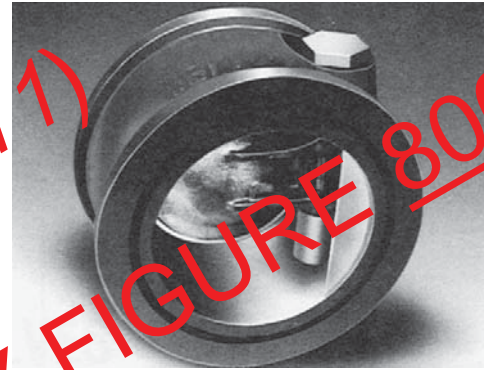
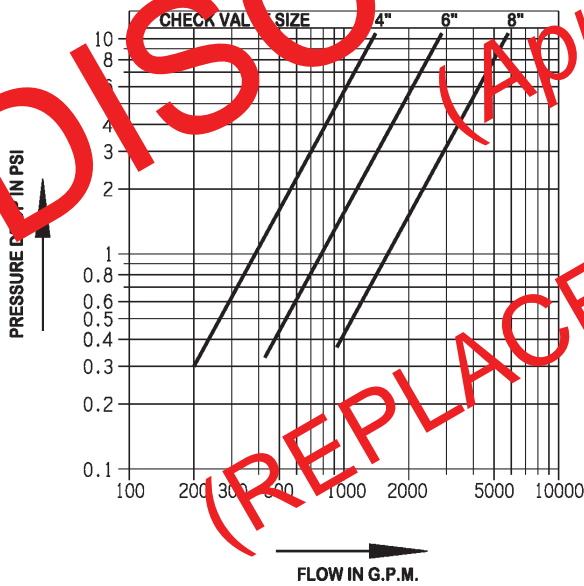
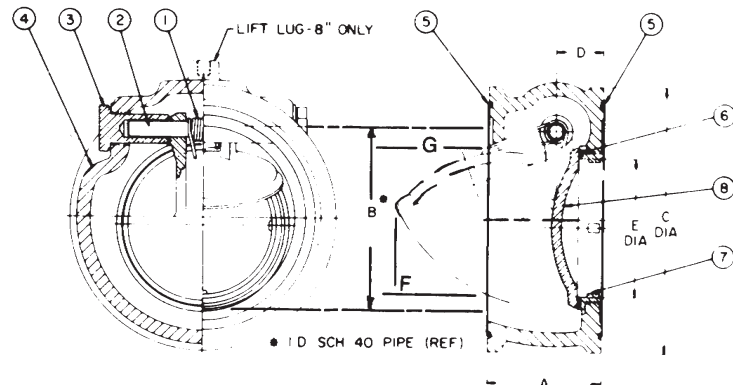


FIG. 706



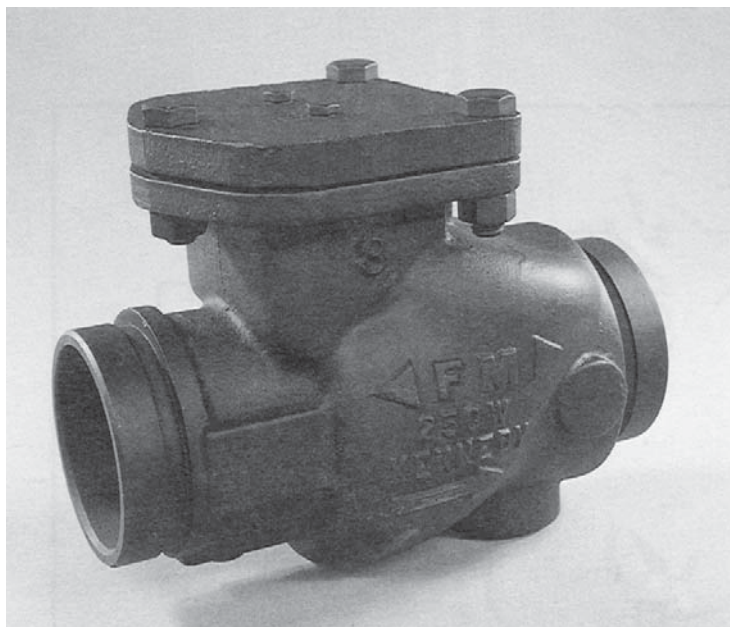
DET.	DESCRIPTION	QTY.	MATERIAL and ASTM SPEC.
01	Spring	1	Stainless Steel ASTM 313-AISI Type 302
02	Hinge Pin	1	Stainless Steel ASTM A276-AISI Type 302/304
03	Side Plug	2	Bronze
04	Valve Body	1	Cast Iron ASTM A126 Class B
05	"O" Ring	2	BUNA-N-ASTM D-735
06	Seal	1	BUNA-N, U/L-312
07	Seat Ring	1	Bronze ASTM B-62
08	Clapper	1	Aluminum Bronze ASTM B806 Alloy C95400/C95500

Size	A	B	C	D	E	WT. LBS.	F	G	WT.
4	3.75	4.03	6.87	1.34	3.03	15	1.50	2.19	15
6	3.75	6.06	8.75	1.53	4.56	23	3.50	2.13	23
8	4.25	7.98	11.00	1.92	6.00	39	5.50	2.50	39

# Grooved Check Valves

**FIGURE 426**  
**UL LISTED/FM APPROVED**  
**SIZES 2½", 3", 4", 6", 8"**  
**Working Pressure: 250 PSI**

The Kennedy Figure 426 Grooved End Swing Check Valve is a lightweight unit that features a top access cover for field maintenance. The valves are intended to be easily installed with approved grooved couplings. They may be installed either with the flow in a vertical position (flow up) or horizontally. All valves have a ½" NPT connection on the inlet side for installation of a ½" Ball drip.



PARTS LIST			
ITEM NO.	QTY.	PART NAME	MATERIAL
1	1	Valve Body	Ductile Iron
2	3	Nut	Plated
3	1	Cover	Cast Iron
4	3	Bolt	Plated
5	1	Cover Seal	SBR Duro 55-65
6	1	Hinge Support	Stainless Steel
7	2	Nut	Stainless Steel
8	2	Washer	Red Fiber
9	2	Hinge Support Bolt	Stainless Steel
10	1	Hinge Pin	Stainless Steel
11	1	Hinge	Stainless Steel
12	1	Valve Disk	EPDM
13	1	Disk Plate	Stainless Steel
14	1	Disk Holder	Cast Iron *
15	1	Disk Nut	Stainless Steel
16	1	Seal Washer	Red Fiber **
17	1	Disk Bolt	Stainless Steel
18	1	Seat Ring	Tin Plated Bronze
19	1	Drain Plug	Zinc Plated

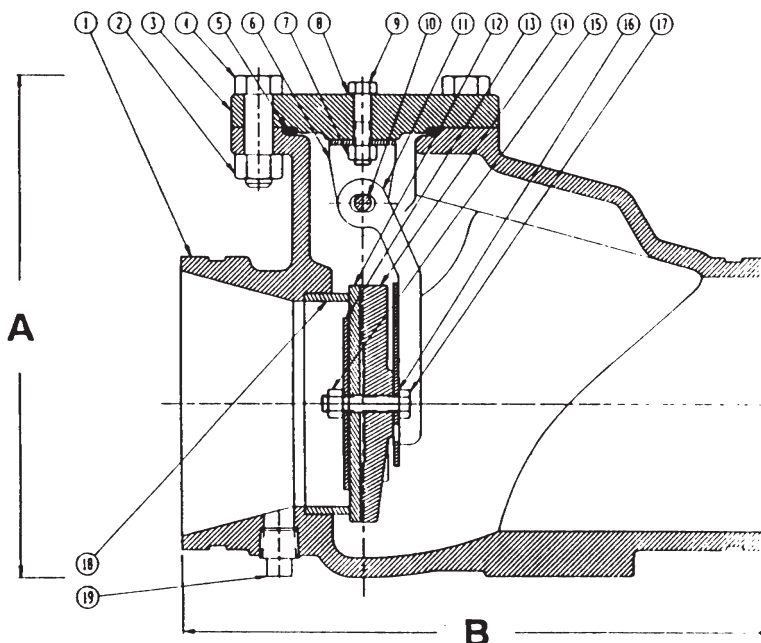
\* 6 and 8 in. sizes only (others are integral to hinge)  
 \*\*2.5, 3 and 4 in. sizes only

## DIMENSIONAL DATA

	Height A	Width B
2.5" =	7.22	8.625
3" =	7.68	9.120
4" =	8.54	9.990
6" =	11.34	13.280
8" =	12.86	14.500

## WEIGHT/POUNDS

2.5" =	19 lb.
3" =	21 lb.
4" =	29 lb.
6" =	61 lb.
8" =	81 lb.

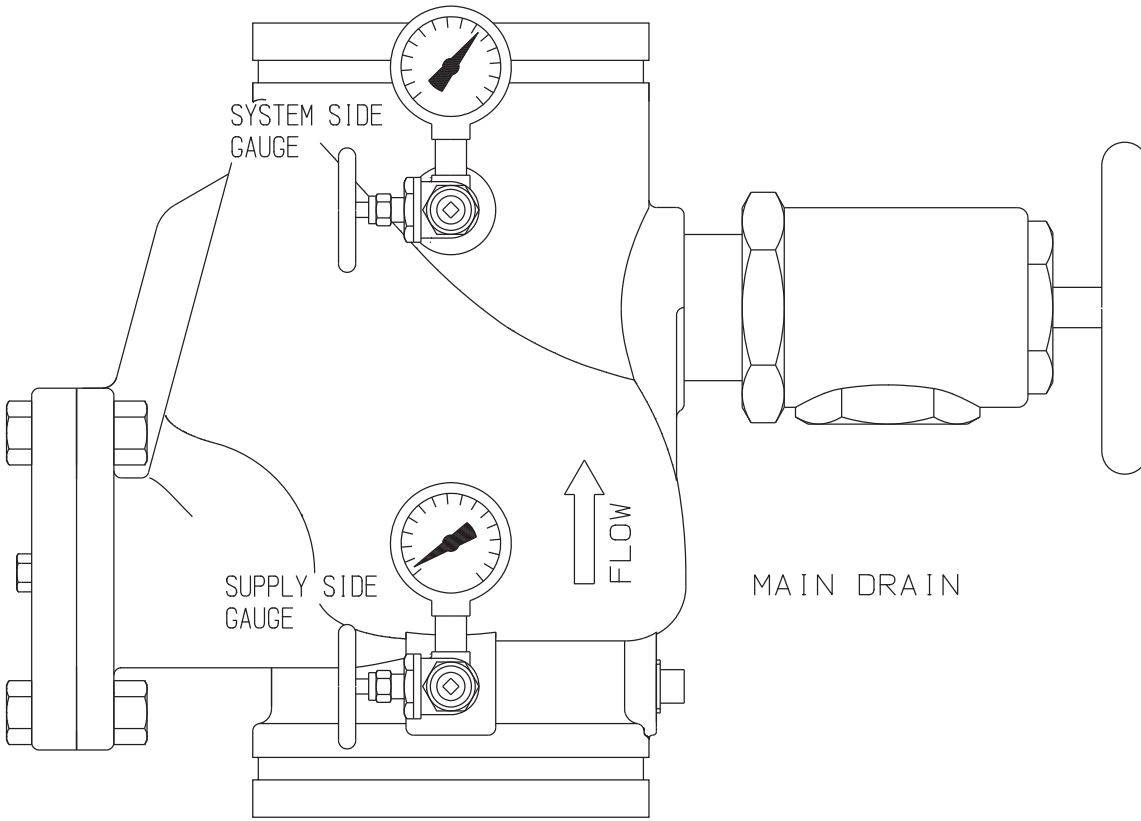




# Kennedy Grooved Check Valves

**RISER CHECK VALVE**  
**FIGURE 426 R**  
**UL LISTED / FM APPROVED**  
**SIZES 2 1/2", 3", 4", 6"**  
**Working Pressure: 250 PSI**

The Kennedy Figure 426 R Grooved Check Valve may be used as a Riser Check Valve. This valve would be a lightweight substitute for an "Alarm Valve Assembly". The valve is intended to be installed vertically in a sprinkler riser, with appropriate trim (optional purchase). Each valve is tapped 1/4" NPT both above and below the clapper for pressure gauges, and 1/4" or 1/2" NPT (depending on valve size) for the drain outlet.



**TRIM KIT 2-1/2" & 3"  
 RISER CHECK VALVE**

- MAIN DRAIN
  - 1 1/4" X 2 1/2" nipple
  - 1 1/4" angle valve
- GAUGE (system side)
  - 0-300 p.s.i. gauge
  - 1/4" X 2" nipple
  - 1/4" pipe plug
  - 1/4" side outlet globe valve
- GAUGE (supply side)
  - 0-300 p.s.i. gauge
  - 1/4" X 5" nipple
  - 1/4" pipe plug
  - 1/4" side outlet globe valve

**TRIM KIT 4" & 6"  
 RISER CHECK VALVE**

- MAIN DRAIN
  - 2" X 2 1/2" nipple
  - 2" angle valve
- GAUGE (system side)
  - 0-300 p.s.i. gauge
  - 1/4" X 2" nipple
  - 1/4" pipe plug
  - 1/4" side outlet globe valve
- GAUGE (supply side)
  - 0-300 p.s.i. gauge
  - 1/4" X 5" nipple
  - 1/4" pipe plug
  - 1/4" side outlet globe valve

**FEATURES:**

Complete size range 2 1/2"-6"  
 250 PSI Rating  
 EPDM Disc, Ductile Iron Body & Clapper  
 304 S.S. Clapper Assembly  
 Top Entry Design

**FRICTION LOSS**

2 1/2"	1.3 PSI @	250 GPM
3"	1.0 PSI @	250 GPM
4"	1.2 PSI @	600 GPM
6"	.91 PSI @	1350 GPM