

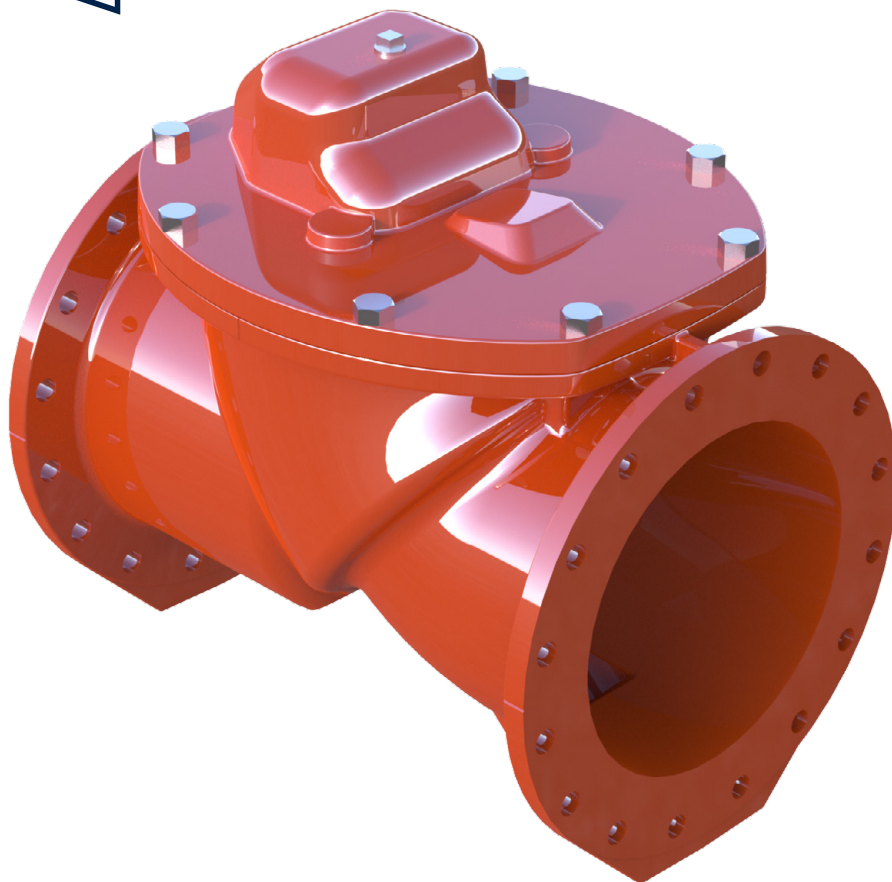


KENNEDY VALVE

INTRODUCING THE NEW **KEN-FLEX** SPRING-LOADED CHECK VALVE

The **NEW, Spring-Loaded Ken-Flex** features Buckling Springs to aid in eliminating water hammer (Patent Pending).

Buckling Springs produce their highest load when extended, where it's most valuable, when the check valve is closed. Opposite, leaf spring loaded Flex Check Valves have their highest load when fully open & lowest at closed.



KEN-FLEX SPRING-LOADED CHECK VALVE

The *Ken-Flex Spring Loaded Check Valve* uses a spring design and a Weighted Flapper Disc combined with a short stroke to diminish water momentum. The buckling springs stiffen while the valve is closed and weaken while the valve is opened, adding a higher CV Valve.

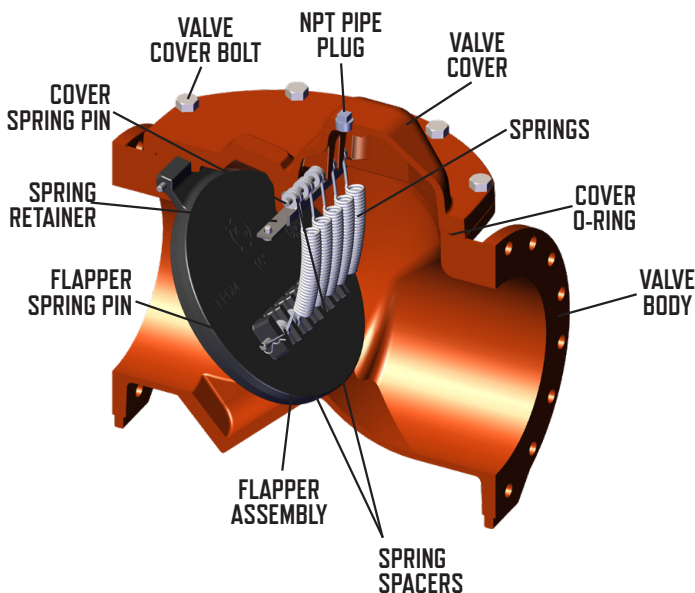
FEATURES

RATED PRESSURE: 250 PSI

TEST PRESSURE: Seat 400 PSI, Shell 500 PSI

- 16" and 24" sizes available
- A.W.W.A. C508
- ASME B16.1 Class
- 100% Flow Area
- Ductile Iron Body and Cover
- Quiet operation with non-slam design
- No external moving parts
- 1 spring standard; more available upon special request (*up to 5*).

Short Stroke, Weighted Disc, and Springs combined close the Ken-Flex faster to diminish water momentum.



KENNEDY VALVE

ORDERING INFORMATION

PH: 800-782-5831

607-734-2211

FAX: 800-952-4771

SALES@KENNEDYVALVE.COM

WWW.KENNEDYVALVE.COM

KENNEDY VALVE

1021 E. WATER ST.

ELMIRA, NY

14902-1516



For Generations

KEN FLEX: REV 0 MAY 2019