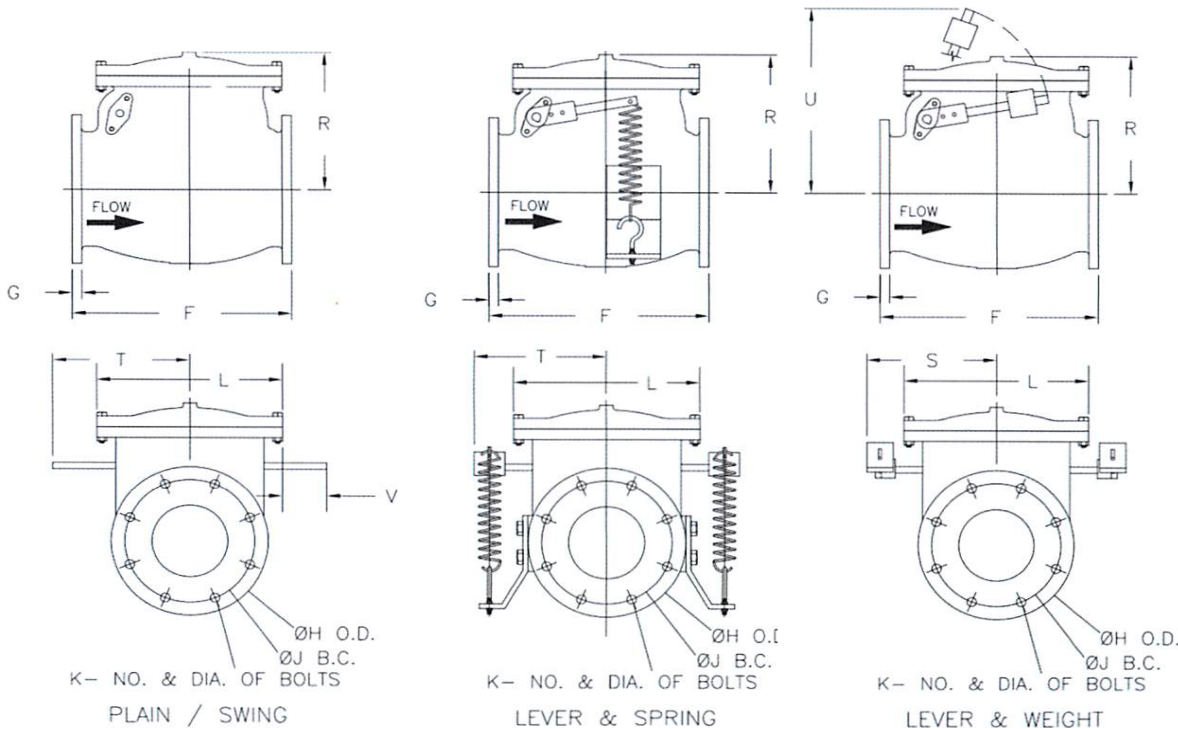




KENNEDY VALVE

AWWA SWING CHECK VALVE GRAVITY / PLAIN / REDUCED WALL SIZES 14" - 36" DIMENSIONS



DIMENSIONS							
SIZE	14	16	18	20	24	30	36
F	31	36	40	40	48	49 1/2	63
G	1 3/8	1 1/16	1 1/16	1 1 1/16	1 7/8	2 1/8	2 3/8
H	21	23 1/2	25	27 1/2	32	38 3/4	46
J	18 3/4	21 1/4	22 3/4	25	29 1/2	36	42 3/4
K	12-1	16-1	16-1 1/8	20-1 1/8	20-1 1/4	28-1 1/4	32-1 1/2
L	22 3/8	25 3/4	27 1/2	32	34 7/8	41	47
R	18 3/4	19 1/16	25	24 1/2	24 1 1/16	28	34
Lever & Spring Check Valve - Style 259-02							
T	18 1/2	19	20 3/4	22 1/2	26	28 1/4	35
WEIGHT	1150	1630	1835	2500	3415	4950	
Lever & Weight Check Valves - Style 159-02							
S	19	19 1/2	20 3/4	22 1/2	27 3/8	29 3/8	35
U	32 1/2	34 1/2	40	42	54 1/2	57 1/2	
WEIGHT	1130	1530	1903	2383	3298	5550	
Plain / Swing Check Valves - Style 59-02							
T	18 1/2	19	20 3/4	22 1/2	26	28 1/4	35
WEIGHT	1060	1460	1750	2230	3040	5300	

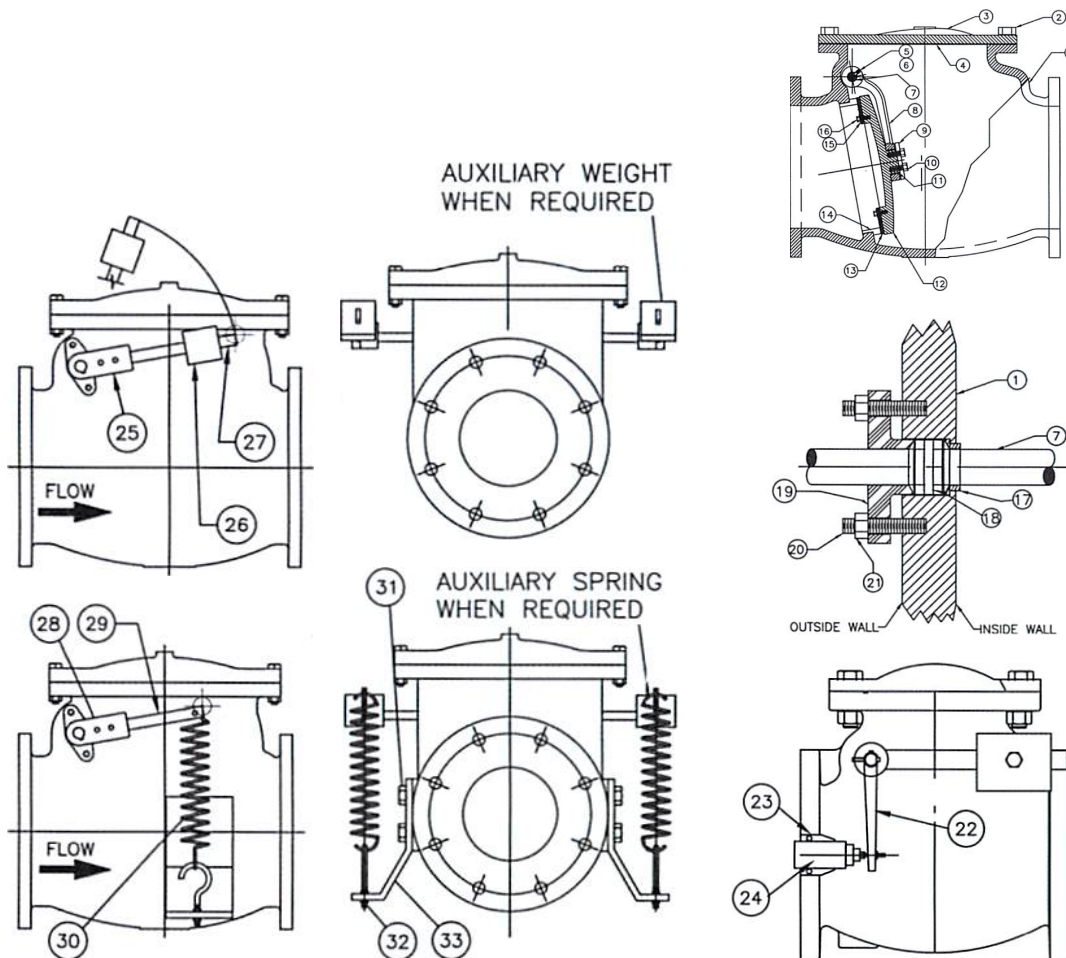
NOTES:

1. These dimensions will be phased in during 2013. Contact factory for exact laying lengths.
2. Check laying lengths when replacing valves that were manufactured prior to 2013.
3. Dim "V" consult M&H for max. cut-off of hinge pin to eliminate clearance problems.



KENNEDY VALVE

AWWA SWING CHECK VALVE GRAVITY / PLAIN / REDUCED WALL SIZES 14" - 36" PARTS LIST



PARTS LIST		
PART No.	PART	MATERIAL & ASTM DESIGNATION
1	Body - F.E.	Ductile Iron A536 65-45-12 or 70-50-05
2	Cover Bolts	ASTM A-307 Gr. B or A EZ Plated
3	Cover	Ductile Iron A536 65-45-12 or 70-50-05
4	Cover O-ring	Buna-N Durometer 70 Approved
5	Clapper Arm Key	304 Stainless Steel
6	Set Screw	Alloy Steel (RC 45-63)
7	Hinge Pin	Stainless Steel ASTM A-276 Yupe 303
8	Clapper Arm	Ductile Iron A536 65-45-12 or 70-50-05
9	Clapper Cap Plate	304 Stainless Steel
10	Hex Bolt Cap Plate	18-8 Stainless Steel
11	Clapper Arm Bushing	Brass C26000
12	Clapper	Ductile Iron A536 65-45-12 or 70-50-05
13	Encapsulated Rubber Clamp Ring	Buna-N Durometer 70 Approved
14	Body Ring	Bronze Alloy C89836
15	Washer, Flat	18-8 Stainless Steel
16	Hex Bolt Clamp Ring	18-8 Stainless Steel
17	Stuffing Box Bushing	Bronze Alloy C89850
18	Packing	Multi-Lock Braid Style ML2254 PTFE
19	Stuffing Box Gland	Ductile Iron A536 65-45-12 or 70-50-05
20	Stud	Steel ASTM A307, EZ Plated
21	Hex Nut	18-8 Stainless Steel
Limit Switch:		
22	Trigger Arm	Steel
23	Mounting Bracket	Steel
24	Limit Switch	SD-D-Type-CR53E
Lever & Weight Check Valve		
25	Weight Lever Arm	Ductile Iron
26	Weight	Fab. Steel
27	Weight Arm Bar	CR Steel C-1018/1020
Lever & Weight Check Valve		
28	Spring Arm Lever	Ductile Iron
29	Spring Arm Bar	CR Steel C-1018/1020
30	Spring	Steel
31	Spring Bracket Cap Screw	Steel A-307 Grade B
32	Spring Eyebolt	Steel A-307 Grade B
33	Spring Bracket	Steel