



KENNEDY VALVE

# FIRE PROTECTION PRODUCTS

## CERTIFICATIONS

ISO 9001

ISO 14001

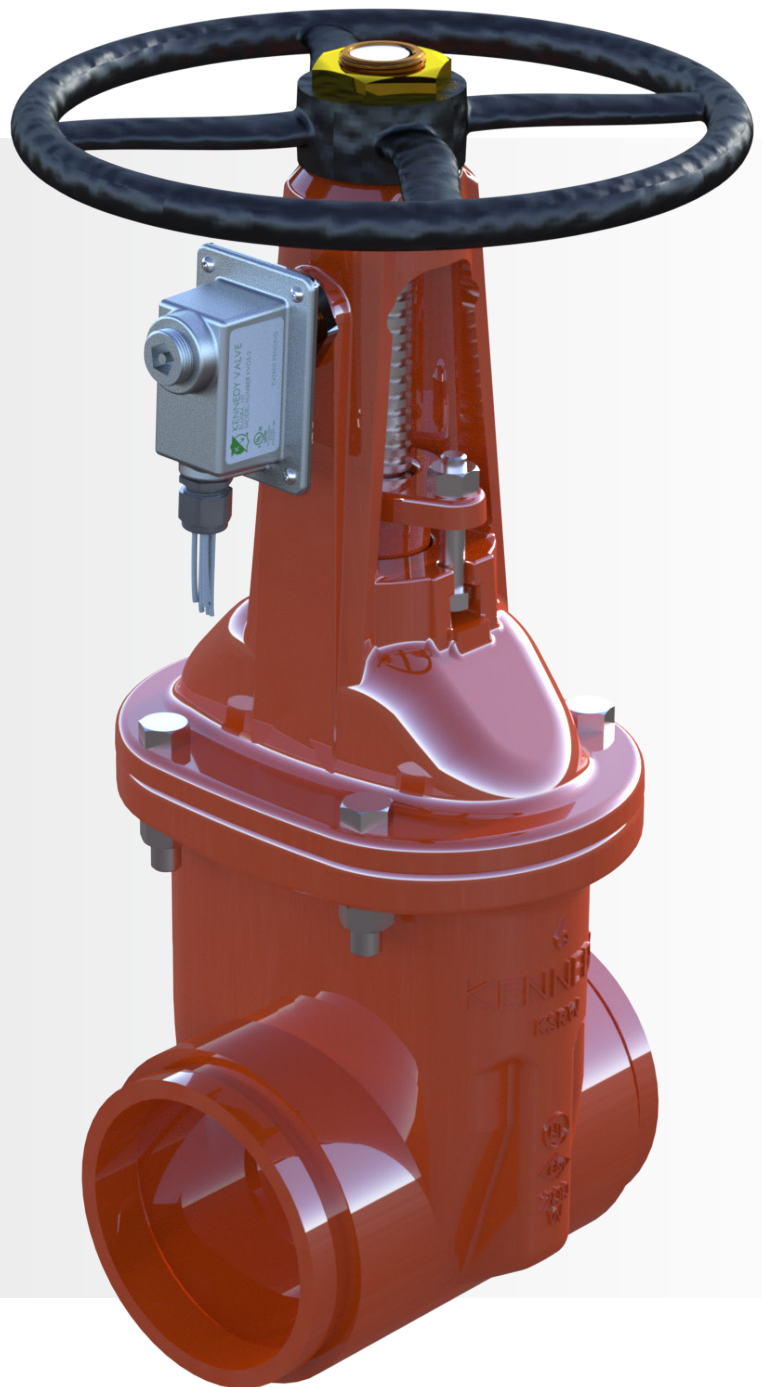
ISO 45001



[CADLIBRARY.KENNEDYVALVE.COM](http://CADLIBRARY.KENNEDYVALVE.COM)



[WWW.KENNEDYVALVE.COM](http://WWW.KENNEDYVALVE.COM)



*WHO  
WE  
ARE...*

## **1** DOMESTIC MANUFACTURER

- Elmira, NY - 140+ Years
- Capable of meeting new 2021 “Buy American” requirements

## **2** UL-FM GATE VALVES

- 2” – 24”
- More end conditions
- Made in USA
- More options

## **3** KVOS TAMPER SWITCH *(OS&Y)*

- Only factory installed switch
- Any 12” and down OS&Y

## **4** INDICATOR POSTS

- Vertical – Fixed or Adjustable
- 4” to 24” Valve Applications
- Horizontal – Wall Installations

## **5** BUTTERFLY VALVES

- Normally Open or Closed
- 8” and down
- Standard, long body w/taps, wafer

## **6** CHECK VALVES

- Flanged, Grooved or Wafer
- 12” and down

## **7** UPGRADES ON PRODUCT LINES

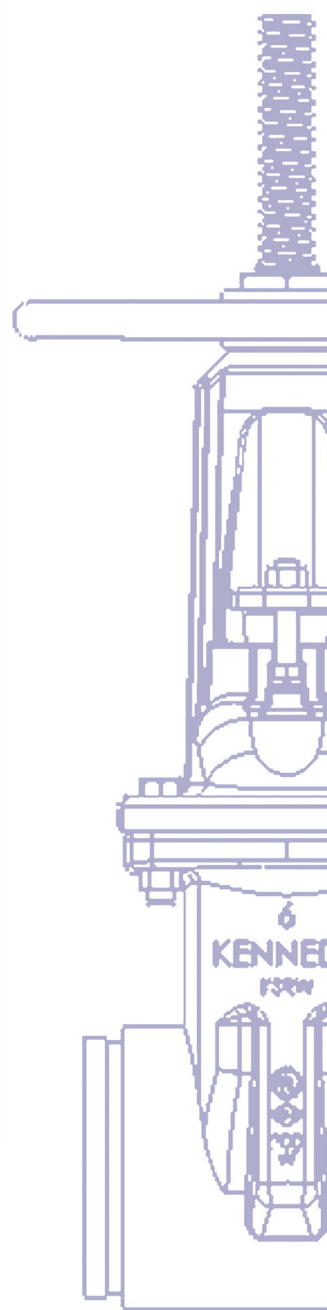
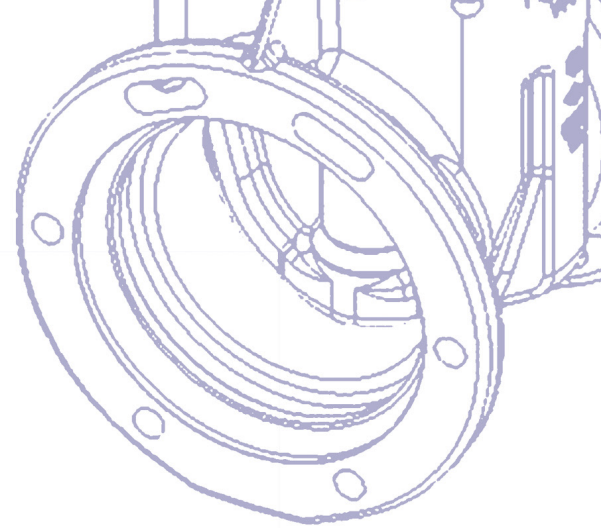
- Butterfly Valve
- Gate Valve

## **8** DIGITAL FILES

- Cad and Revit/BIM

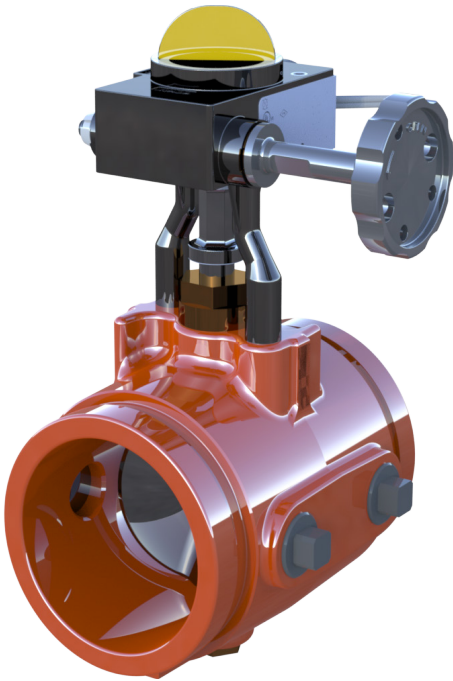
# TABLE OF CONTENTS

Butterfly Valve	Pg. 3
Supervisory Switch	Pg. 4
KVOS-2 for KS-RW / KS RWHP	Pg. 5
2"-12" KS FW Series 8000 Gate Valve	Pg. 6
2"-24" KS RW Series 7000 Gate Valve	Pg. 7
3"-12" KS RW HP Series 5000 Gate Valve	Pg. 8
2 ½"-14" Double Disc Gate Valve	Pg. 9
Indicaor Post	Pg. 10
Check Valve	Pg. 11
K17 Industrial Hydrant	Pg. 12
K17 Features	Pg. 13
About Us	Pg. 14



Designed for years of trouble free reliability, Kennedy UL-FM butterfly valves are constructed of durable ductile iron for a lightweight superior product. We utilize stainless steel upper and lower shafts as well as EPDM encapsulated discs. Our fusion bonded coated bodies offer a superior long-lasting coating. The valves are slow operating with low torque leading to excellent high cycle life. Our butterfly valves are always rated to 300psi and all are fully hydrostatically tested before they leave Elmira, NY.

## **GROOVED BUTTERFLY VALVES**



### **STANDARD BODY**

- 2-1/2" - 8" (Normally Closed also available)

### **Extended Body BFV\*\***

- 2-1/2" - 8"

- USC Approved and NSF Certified with EPDM Disc

- Normally Closed also available

- (4) 3/4" NPT Taps

### **Listed Pressure**

- UL-FM 300 PSI

### **Features**

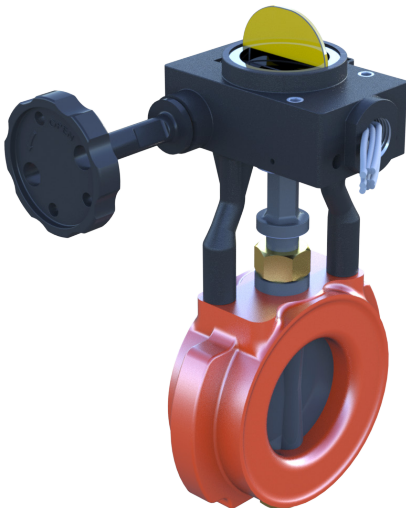
- Outdoor Rated

- Lightweight

- Standard IPS Grooves

- CA State Fire Marshall Accepted

## **WAFER BUTTERFLY VALVES**



- 2-1/2" - 8" (Normally Closed also available)

### **Listed Pressure**

- UL-FM 300 PSI

### **Features**

- Outdoor Rated

- Lightweight

- Short Lay Length

- Does NOT require washer for installation with grooved flange adapter.

- CA State Fire Marshall Accepted

\* Fire Protection product is not NSF Certified. For acquiring NSF 61 or USC approved valves, contact KV Sales Dept.

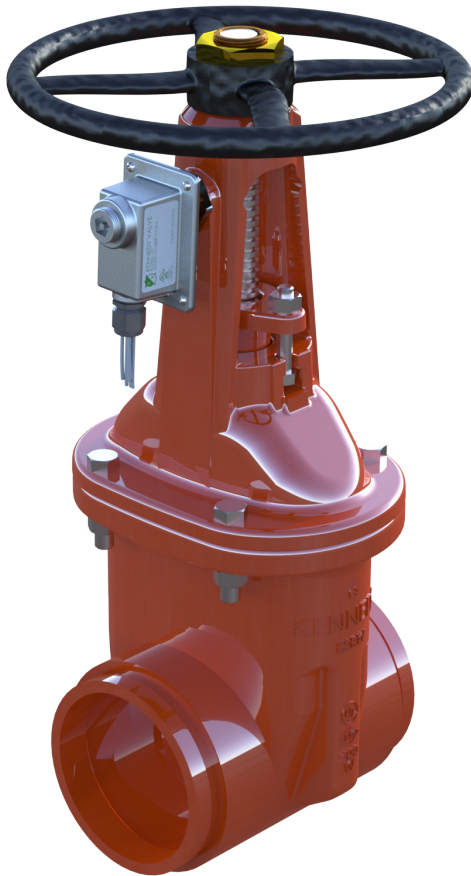
\*\* Extended Body shown



## Factory-Installed Supervisory Switches Now Available on OS&Y Valves

Equipping fire protection control valves with supervisory tamper switches is required by code, but manually installing and calibrating switches in the field can be cumbersome.

For greater convenience and streamlined installation, we offer the new KVOS2, a factory-installed and UL / ULC-listed supervisory switch that can be specified on any of our OS&Y valves, from 2.5" - 12".



### Key Benefits

- **Factory installed and tested:** eliminates significant hand-assembly, lengthy field instructions and opportunity for error. Just install the valve and connect the switch.
- **Industry-standard switch:** meets all traditional specifications and code requirements. UL and ULC listed.
- **Eliminates field calibration:** switch operation calibrated at the factory.
- **Improved mounting:** rigid connection integrates to valve, no brackets that can bend, loosen or deflect from position.
- **CA State Fire Marshall Approval**
- **Saves time, saves hassle, saves money.**

**How to Specify:** Request the KVOS-2 to be factory-installed at time of order

**Method of Operation:** The KVOS-2 is a 3-position switch designed to send a tamper signal when the valve has been closed and also if the switch has been removed from the valve. In the neutral position, the switch indicates the valve is fully open. Closing the valve causes the switch rod to come out of the valve stem groove, activating the switch. Removing the switch also activates the switch.

**General Specifications:** UL / ULC Listed OS&Y valve supervisory switches shall be furnished and installed on all OS&Y type valves that can be used to isolate the flow of water to any portion of the fire sprinkler system, where indicated on the drawings and plans and as required by applicable codes and standards. The supervisory switch shall be NEMA 4X and 6P rated and suitable for use indoors or outdoors. The supervisory switch shall be listed and labeled as defined in NFPA 70 by a qualified testing agency and marked for intended location and application. It shall comply with NFPA and NFPA 13R. The switch shall be factory-installed and calibrated to the valve by the valve manufacturer. The switch contacts shall be rated at 10A, 125/250VAC and 2A, 30VDC. The switch shall be model KVOS-2.

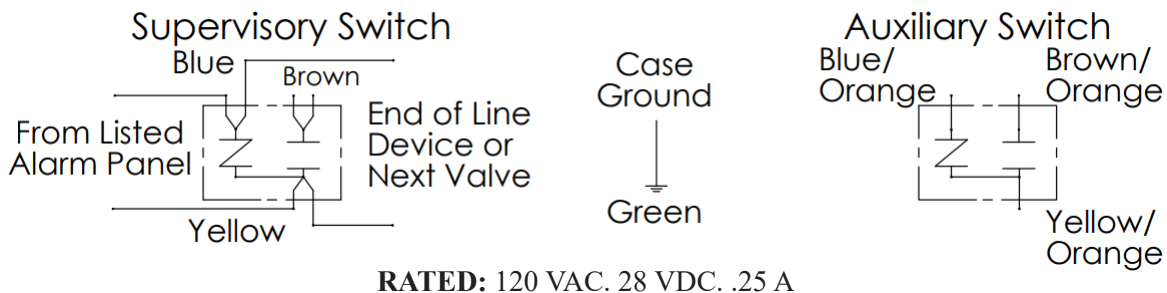
## Field Service of Installed Switch

Field repair by other than factory personnel is not recommended. Consult factory before attempting any repairs. Tamper resistant tools are required. Limited internal parts available. All replacement parts must be obtained from the manufacturer to assure proper operation of the valve and to maintain agency approval of the device.

### Field Installation of Switch

- 1] Close valve
- 2] Remove wheel nut with appropriate open end wrench
- 3] Remove handwheel
- 4] Screw switch unit into tapped hole until bushing is flush with the inside of the yoke
- 5] Tighten nut against yoke with an open end wrench to 50 FTLBS min.
- 6] Re-install handwheel
- 7] Open valve until trip arm is halfway into the groove
- 8] Remove security plug
- 9] Using 9/16" socket with extension, back off adjustment nut until it depresses switch tab; counteract rotation of the trip arm with a 9/16" open end wrench. There will be two clicks. At this point there should be continuity through the brown and yellow leads. The brown with orange stripe and yellow with orange stripe leads must have continuity as well.
- 10] Open valve fully, ensuring the trip arm is seated in the groove. At this point the blue to yellow leads and blue/orange to yellow/orange leads must have continuity. If both switches aren't in unison, further adjustments must be made.

**Note:** The switch must be installed in such a manner so that closing 20% of the valve or a maximum of 4 revolutions will cause the switch to change status; verify this after setting limits.



**Wiring Notes:** Connection to power limited circuitry is required. Auxiliary switch is for supplemental use only, and shall not be used for fire alarm signaling applications. Switches are checked at factory, check continuity with valve fully open, switches activate within two turns from open.



Kennedy Valve revolutionized the gate valve market in the early 1980's by offering the first resilient seated gate valve in the USA. Today Kennedy is still the industry leader in UL-FM gate valve design and performance with product rated up to 350 psi for UL-FM service requirements. All 12" and down Kennedy OS&Y's come standard with a machined groove to easily accommodate adding a supervisory switch to the product.

## KS FW Series 8000

Kennedy Valve Series 8000 Resilient Wedge Gate Valves meet or exceed the requirements of AWWA standard C509, UL-262/FM-1120/1130, ULC - Underwriters' of Canada, and NSF Certified.

Available in either non-rising stem (NRS) or outside screw & yoke (OS&Y). NRS style is available with post plate for adaptation with an indicator post. Handwheel with OS&Y is standard.

### Listed Pressure

200 PSI. ULFM

## C509 END CONNECTIONS & SIZE RANGE

### KS-FULL WALL 200 PSI

END CONNECTION	NRS
Flanged	2.5" - 12"
MJ x MJ	3" - 12"
MJ x Flanged	3" - 12"
MJ x Flng Tap	4" - 12"
Tyton x Tyton	4" - 12"
Tyton x Flng	4" - 12"
PVC w/ Gaskets	2.5" - 8"
Threaded	2.5" - 3"

\* 3"-12" NRS Available with Post Indicator Plates

### KS-FULL WALL 200 PSI

END CONNECTION	OS&Y
Flanged	2" - 12"
Threaded	2" - 3"



*FLG x FLG NRS with Post Plate shown*



Kennedy Valve  
RSGV O&M Manual

**KS RW Series 7000**

Kennedy Valve KS RW Series 7000 Resilient Wedge Gate Valves meet or exceed the requirements of AWWA standard C515, UL-262/FM-1120/1130, ULC - Underwriters' of Canada, and NSF Certified. All 12" and down Kennedy OS&Y's come standard with a machined groove to easily accommodate adding a supervisory switch to the product.

Available in either non-rising stem (NRS) or outside screw & yoke (OS&Y). NRS style is available with post plate for adaptation with an indicator post. Handwheel for OS&Y is standard.

**Accessories**

- KVOS OS&Y Monitor Switch
- Indicator Posts
- "T" Handles
- 2" Sq. Operating Nuts
- Handwheels
- Chain Wheels

**Listed Pressure**

UL-FM (see chart)



*FLG x GRV OS&Y shown*

**C515 2"-12" END CONNECTIONS & SIZE RANGE**

**KS RW 200 PSI (UL-FM)**

END CONNECTION	NRS
FLG	4" - 12"
MJ x MJ	4" - 12"
MJ x FLG	4" - 12"
MJ x FLG Tap	4" - 12"
Tyton x Tyton	4" - 12"
Tyton x FLG	4" - 12"
FLG x GRV	2.5" - 10"
GRV x GRV	2.5" - 12"
PVC with Gaskets	6" - 8"

3" and up NRS Available with Post Indicator Plates

**KS RW 200 PSI (UL-FM)**

END CONNECTION	OS&Y
FLG	4" - 12"
FLG x GRV	2.5" - 8"
GRV x GRV	2.5" - 12"

**Note:** 250 lb Class Flange 2-1/2" - 8", UL Listed to 300 PSI also available.

All KS RW OS&Ys can be equipped with factory-installed tamper as shown on Page 3.

**C515 14"-24" END CONNECTIONS & SIZE RANGE**

**Model 2638 KS RW**

END CONNECTION	NRS	PSI
FLG	14" - 16"	250
MJ x MJ	14" - 16"	250
MJ x FLG	14" - 16"	250
MJ x FLG Tap	14" - 16"	250
Tyton x Tyton	14" - 16"	250
FLG	18" - 24"	200
MJ x MJ	18" - 24"	200
MJ x FLG	18" - 24"	200
MJ x FLG Tap	18" - 24"	200
Tyton x Tyton	18" & 20"	200

NRS Available with Post Indicator Plates

**Model 2638 KS RW**

END CONNECTION	OS&Y	PSI
FLG	14" - 16"	250
FLG	18" - 24"	200



## KS RW/FW-HP, Series 5000

Kennedy Valve Series 5000 Resilient Wedge Gate Valves meet or exceed the requirements of AWWA standard C515, UL-262/FM-1120/1130, ULC - Underwriters' of Canada, and NSF Listed.

Available in either non-rising stem (NRS) or outside screw & yoke (OS&Y). NRS style is available with post plate for adaptation with an indicator post. Handwheel is standard for OS&Y.

## END CONNECTIONS & SIZE RANGE

### C515 KS RWHP 350 PSI (DUCTILE)

END CONNECTION	NRS	OS&Y
Flanged (Class 125)	4" - 12"	4" - 12"
Flanged (Class 250)	4" - 12"	4" - 12"
GRV	3" - 12"	4" - 12"
FLG x GRV	3" - 8"	4" - 8"
MJ	4" - 12"	
FLG x MJ	4" - 12"	
MJ x Tap	4" - 12"	
Tyton	4" - 12"	
FLG x Tyton	4" - 12"	
Tapped	4" - 12"	

### C509 KS FWHP 350 PSI (DUCTILE)

END CONNECTION	NRS	OS&Y
Flanged (Class 125)	2.5" - 3"	2.5" - 3"
Flanged (Class 250)	2.5" - 3"	2.5" - 3"
MJ	3"	
Threaded	2.5" - 3"	
PVC	2.5" - 3"	
FLG x MJ	3"	

3" - 12" NRS Available with Post Indicator Plates  
All KS RW/FW-HP can be furnished with factory-installed tamper as shown on Page 3.



*High Pressure FLG x FLG OS&Y  
with Handwheel is shown*



Kennedy Valve  
RSGV O&M Manual



## Double Disc Gate Valve

The Double Disc Gate Valve furnished by Kennedy Valve Company offers rugged construction, easy operation, long service life and economical maintenance. They are parallel seat valves meeting or exceeding all requirements AWWA Specifications C500 and conform to Federal Specifications WW-V-58b, Type II, Class I.

Ideal for applications where long life is desired or elastomer degradation has been experienced or is expected.

### Accessories

- 2" Sq. Operating Nuts
- Indicator Post Plates available (14" only)

## END CONNECTIONS & SIZE RANGE

### UL Listed

END CONNECTION	NRS / OS&Y
FLG	2-1/2" - 14"
MJ	2-1/2" - 14"
Threaded	2-1/2" - 12"
PVC	2-1/2" - 12"
FLG x MJ	2-1/2" - 12"
MJ x Tap	2-1/2" - 12"
Hub	2-1/2" - 12"
Caulk x Tap	2-1/2" - 12"
FLG x Right-Tite Tap	2-1/2" - 12"

\* 2-1/2" - 10" 200 PSI | 12", 14" 175 PSI

### FM Approved

END CONNECTION	NRS / OS&Y
FLG	2-1/2" - 14"
MJ	2-1/2" - 12"
FLG x MJ	2-1/2" - 12"
PVC	2-1/2" & 3"
Threaded	2-1/2" & 3"

\* 2-1/2" - 12" 200 PSI | 14" 175 PSI



*with Post Plate*

## Indicator Posts

Kennedy Valve's Indicator Posts provide the reliable way of operating a buried or inaccessible Gate Valve for opening and closing purposes. The Indicator Posts are available in various lengths to meet the various trench depths. These Indicator Posts come with an L shaped handle which can be fitted with a secure lock. The Indicator posts are available either in Fixed or Adjustable Length type design.

### General Specifications

- Type: Post Indicator Telescopic Barrel
- Suitable for Gate Valve sizes 4" to 24" (DN100 - DN600)
- Approvals: UL 789 & FM 1110

### Models

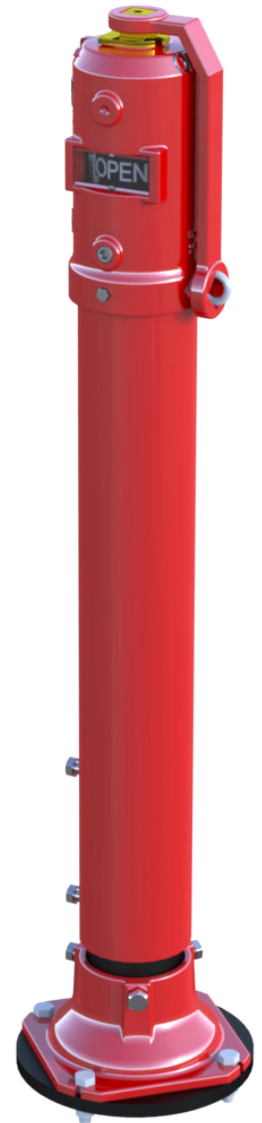
- 2945A: Adjustable type, available in B, C, D, and E sizes
- 2945: Fixed type, available in F, G, and H sizes
- 2945ALV: Adjustable Large Valve type, 18" to 24" valves, available in B, C, D, and E sizes, 72 turns
- 2945W: Wall Post applications

### Features

- Durable iron construction with a ductile iron telescoping barrel on all adjustable posts
- Target nut to allow 9 to 45 turns (2945)
- Adjustable Indicator Plate (open / shut)
- Protected window to indicate the valve open or closed position
- Tapped for supervisory switch

### Coating

- Telescopic Barrel: Fusion Bonded Epoxy
- Lower Barrel Black Bitumen



2945A



2945W

## Figure 1126 (Metal Seated) & 1126A (Elastomer Seated) Check Valves

Kennedy UL/FM / ULC Check Valves can be installed in the horizontal or vertical orientation (flow up). The 1126 and 1126A are available tapped for easy installation of gauges at up to six locations. The disc design facilitates spinning and thus renewable seating performance during normal operation. Our modern cover design allows for simple inspection and service utilizing a tapped body, eliminating nut and bolt combinations seen on older products. We also use an O-ring system for modern and superior cover seating performance. Both our metal seated 1126 and the elastomer seated 1126A are fully hydrostatically tested for validation before shipping. Of course, both the I.D. and the O.D. are factory coated with fusion bonded epoxy for superior corrosion resistance. NYC MEA approved.



### UL Listed Pressure

- 175 PSI (2-1/2" - 12")
- Cold water, non-shock

## Figure 726 Grooved End Check Valves

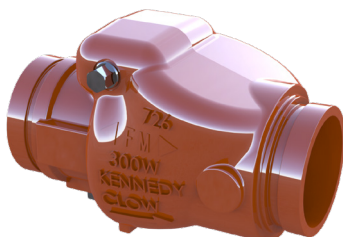
The Kennedy figure 726 Grooved end swing check valve is a lightweight unit that is intended to be easily installed with approved grooved couplings. They may be installed either with the flow in a vertical orientation (flow up) or horizontally. All valves have a 1/2" NPT connection on the inlet side for installation of a 1/2" ball drip.

### Sizes & Weight

- 2-1/2" - 15" lbs.
- 3" - 20 lbs.
- 4" - 25 lbs.
- 6" - 50 lbs.
- 8" - 60 lbs.

### UL Listed Pressure

- 300 PSI.

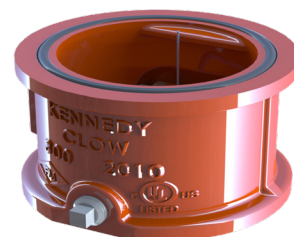


## Figure 806 UL/FM / ULC Approved Wafer Checks

Our 4, 6, and 8" wafer checks are industry leading designs that offer built in resilient seating performance for the installer. Each valve is manufactured with integral O-ring seals as part of its end condition. Flange gaskets are not required. If being installed with a groove flange adapter, a simple washer can be inserted to provide easy seating and installation. Spring loaded, the Kennedy wafer check can be installed easily in either the horizontal or vertical. This valve is an absolute must for limited space installs.

### UL Listed Pressure

- 300 PSI. Working Pressure



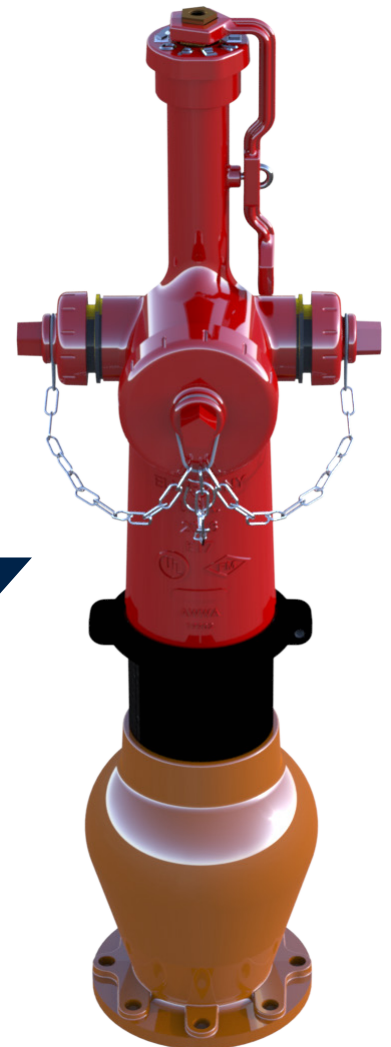
## K17 MONITOR



- 3" & 4" Monitor ANSI Flange Drilling
- Integrally Cast Monitor to Upper Barrel (3 Way Design Option)
- UL Approved & FM Listed
- Meets or exceeds AWWA C502
- Full flow 3 way openings: (1) 4 1/2" pumper nozzle (2) 2 1/2" hose nozzle
- Full Flow 4 way openings: (2) 4 1/2" pumper nozzle (2) 2 1/2" hose nozzle. Monitor option also available on 4 way hydrant (4 way option is AWWA C502 only)

### Shoe with choice of:

- 6" MJ
- 6" ANSI Flange
- Straight Shoe
- DN150



## K17 HYDRANT WITH STRAIGHT SHOE

- Allows for install in vertical pipeline
- Shares common components with standard shoe
- UL Approved & FM Listed
- Meets or exceeds AWWA C502



The Kennedy Valve 6" Main Valve K17 Hydrant is designed effectively for industrial applications. The pressure loss due to friction is less than 2.0 PSI at 1000 gpm through a 4-1/2" pumper nozzle.

- 1| Low head loss, below 2 PSI at 1000 GPM
- 2| Full 6" diameter adjustable main valve
- 3| Security Locking wrench system or handwheel operator
- 4| Only 2 bolts per hydrant. No bolts below ground line.
- 5| Meets or exceeds all applicable parts of AWWA C502, UL 246, & FM 1510
- 6| Integral Upper half < 50lbs., one man repair
- 7| Straight Shoe option
- 8| 350 PSI. Rated Pressure (2415 kPa)  
700 PSI. Test Pressure (4830 kPa)
- 9| Patent Pending\* Anti Cavitation Baffle
- 10| Spring Pack & Roller Bearing allow easy operation.
- 11| Easily field rotatable to accommodate changing conditions.

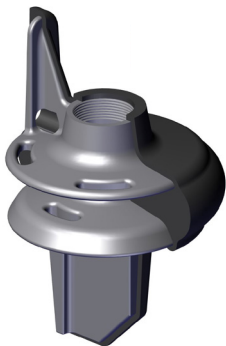
350 PSI RATED  
Low Head Loss < 2 PSI  
@1000 GPM  
Simplified Design  
(No Seat Ring or Bonnet)

Patented Main Valve is adjustable for leakage correction or removal.

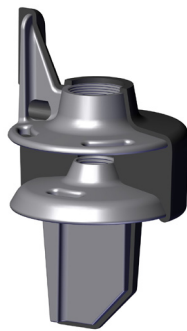


### PATENTED MAIN VALVE CUTAWAY ILLUSTRATION

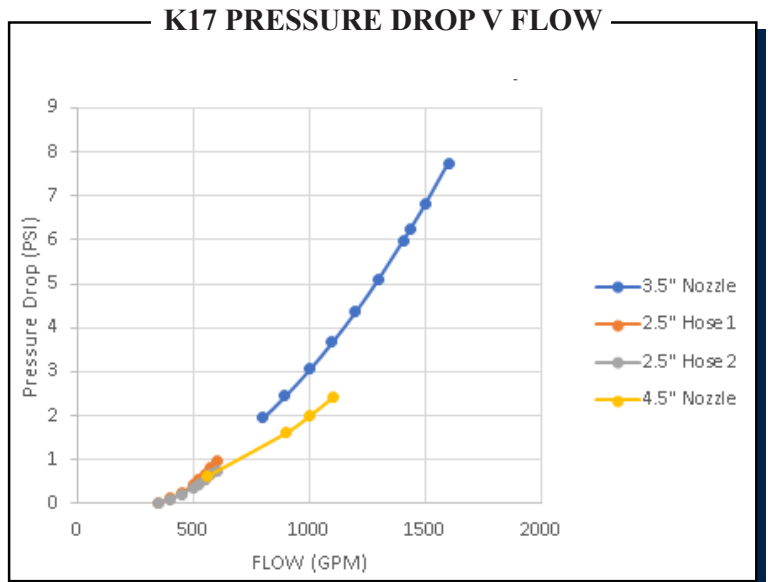
*Cross sectional views for illustrative purposes only*



**COMPRESSED TO SEAT**  
After Installation



**DECOMPRESSED**  
Prior to Installation



“So... *What’s*  
*so special about*  
*about Kennedy Valve?*”

- All scrap metal is scanned for radiation prior to acceptance into scrap storage.
- KV has the capability to pour iron from three 10-ton furnaces.
- We utilize a heat melting process vs. batch melting. The heat process offers a superior method of controlling iron chemistry.
- Kennedy Valve, Elmira checks metallurgy on every pour utilizing both Spectro testing and a Leco Analyzer.
- We continually check temperature of iron throughout the process, ensuring consistent chemistry producing a “best in class” outcome.
- We have the capability to cast up 1000lb castings or slightly larger. Our high-speed line can handle up to 300lb castings.
- An enhanced capability project for the high speed line is underway.
- We utilize a FaroArm to measure whether the product meets standards.
- Our machining center has 80+ CNC machining cells. Our horizontal milling capability is up to 2000mm and we have a vertical lathe capability up to 2500mm
- Our painting and coating cells apply polyester coating that’s fade resistant as well as fusion bonded epoxy, and liquid two-part epoxy systems
- Today we make valves and components in house from 2” to 48” in Elmira, NY on the same site since 1907.



**WE PROUDLY SERVE**



**PETROLEUM OIL & GAS**



**MANUFACTURING**



**INSTITUTIONAL**



**COMMERCIAL**



**KENNEDY VALVE**

**ORDERING  
INFORMATION**

PH: 800-782-5831  
607-734-2211

[KNV.SALES@MCWANE.COM](mailto:KNV.SALES@MCWANE.COM)  
[WWW.KENNEDYVALVE.COM](http://WWW.KENNEDYVALVE.COM)

**KENNEDY VALVE**

1021 E. WATER ST.  
ELMIRA, NY  
14902-1516



**For Generations**

ULFM REV 11: SEP 2021