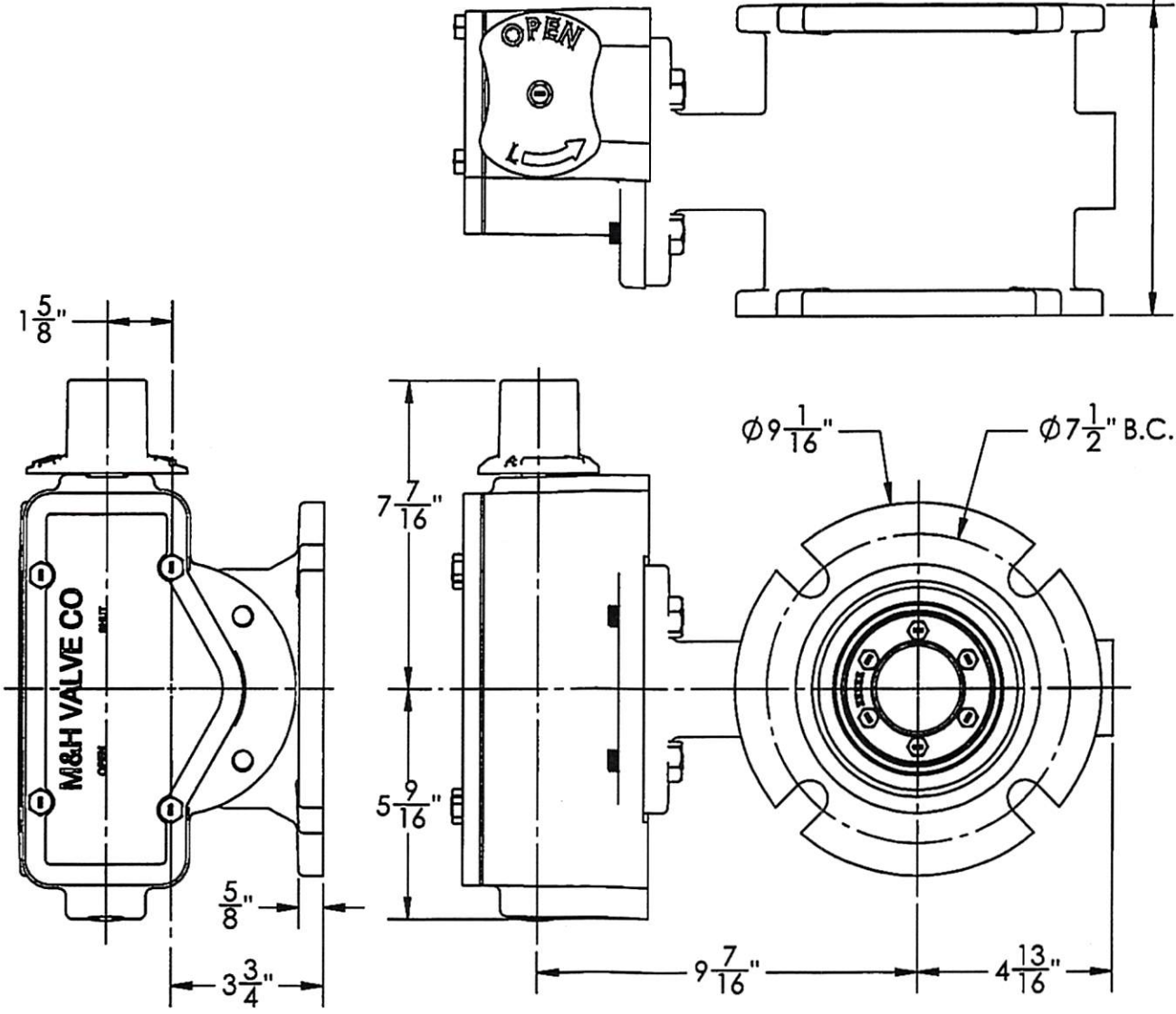


7 1/2" LAY LENGTH



1. FLOW MAY BE IN EITHER DIRECTION
2. VALVE SHAFT WILL MEET OR EXCEED AWWA C504 REQUIREMENTS
3. REFERENCE AWWA C504 FOR FLANGES AND DRILLING (ANSI 125)
4. 29 TURNS TO CLOSE
5. (4) 3/4" BOLTS ON EACH FLANGE
6. OPERATED BY 2" AWWA OPERATING NUT/WRENCH NUT
7. RATED AND TESTED FOR 150psi WORKING PRESSURE
8. GASKETS, GLANDS AND BOLTS FOR MECHANICAL JOINT FURNISHED WITH VALVE WHEN SPECIFIED ON ORDER

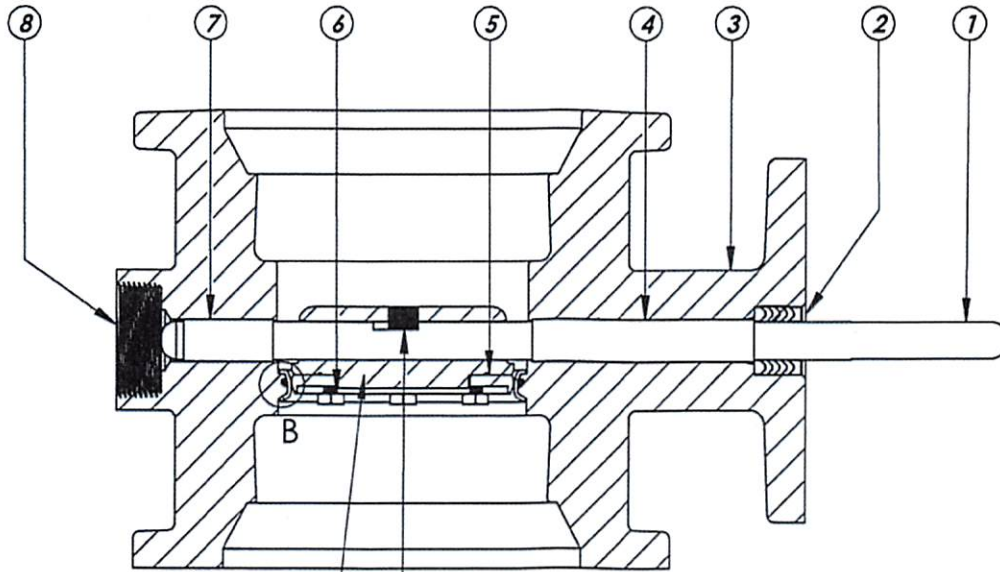
THIS DWG. AND ALL INFORMATION IS OUR PROPERTY AND SHALL NOT BE USED, COPIED, OR REPRODUCED WITHOUT WRITTEN CONSENT. DESIGN AND INVENTION RIGHTS RESERVED.



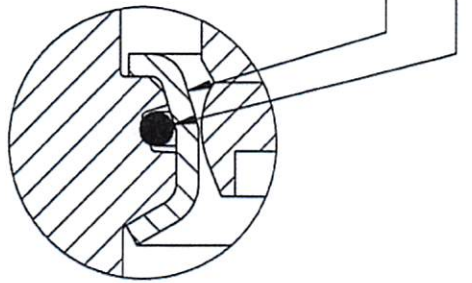
**KENNEDY VALVE**  
 Division of McWane, Inc.  
 1021 East Water St.  
 Elmira, NY 14901

**DRAWN:** CTJ  
**DATE:** 6/30/2020  
**DWG. NO.**  
 BD04-M1-M11-000

**4" - Style 4500 - CL150**  
**BFV with F/A 12 MSS/ISO Connection**  
**MJ ENDS - Buried Operator OPEN LEFT**



SECTION A-A  
SCALE 1 : 3



DETAIL B  
SCALE 2 : 1

ITEM NO.	DESCRIPTION	MATERIAL
1	VANE SHAFT	304 STAINLESS STEEL, ASTM A-276
2	V-RING PACKING SET	EPDM, BUNA-N
3	BFV BODY	DUCTILE IRON ASTM A-536
4	UPPER JOURNAL BEARING	NYLATRON
5	VANE SEAT RING	EPT with SS INSERT
6	HEX HEAD CAPSCREW	18-8 STAINLESS STEEL with NYLOC PATCH
7	LOWER JOURNAL BEARING	NYLATRON
8	BFV BODY END PLUG	STEEL
9	BFV VANE	DUCTILE IRON ASTM A-536
10	VANE SHAFT TORQUE PLUG	18-8 STAINLESS STEEL
11	BODY SEAT RING	316 STAINLESS STEEL
12	BODY SEAT O-RING	BUNA-N

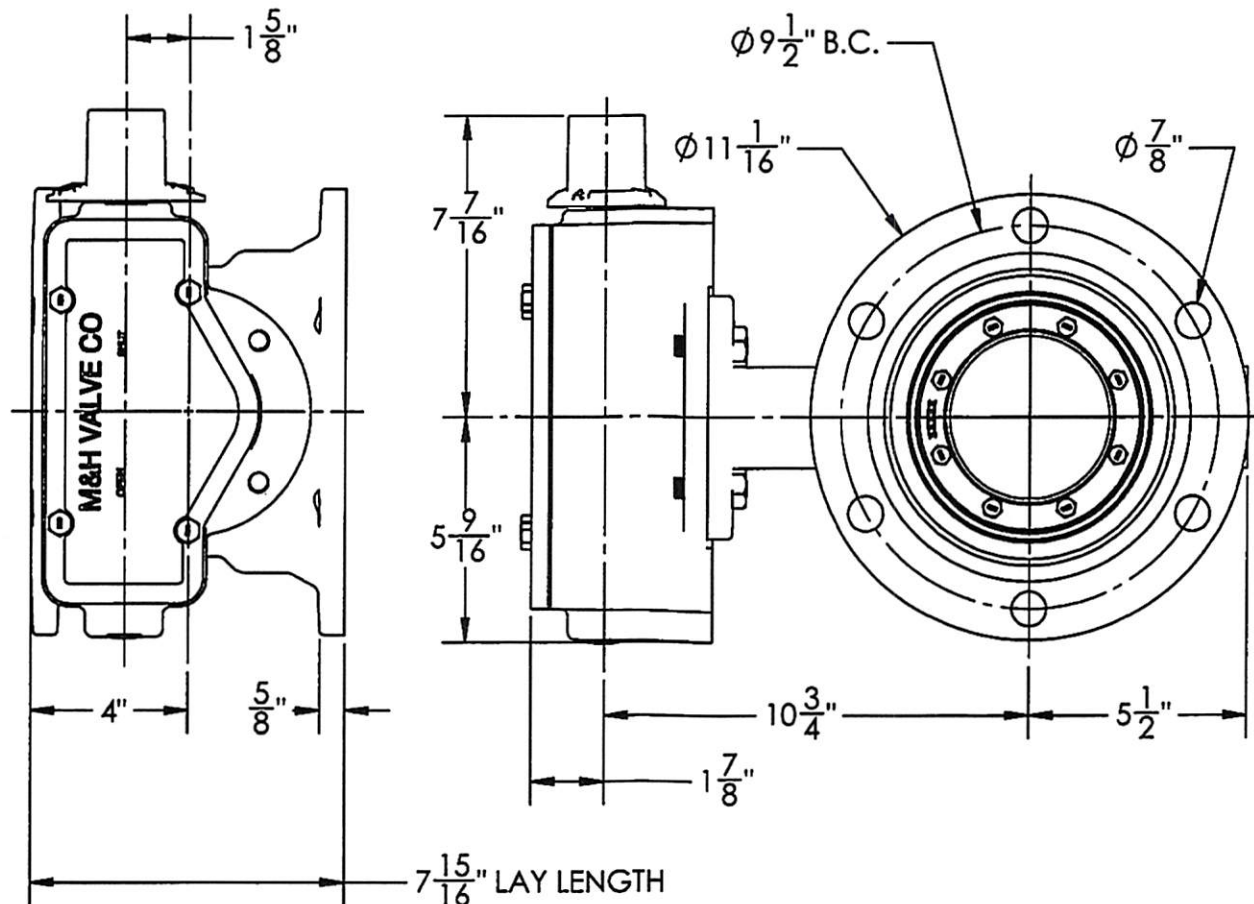
THIS DWG. AND ALL INFORMATION IS OUR PROPERTY AND SHALL NOT BE USED, COPIED, OR REPRODUCED WITHOUT WRITTEN CONSENT. DESIGN AND INVENTION RIGHTS RESERVED.



**KENNEDY VALVE**  
Division of McWane, Inc.  
1021 East Water St.  
Elmira, NY 14901

DRAWN: ZF  
DATE: 1/4/17  
DWG. NO. B04MBB11

4" AWWA C504 - Style 4500 - CL150  
BFV with F/A 12 MSS/ISO Connection  
Sub-Assembly - Material List  
MECHANICAL JOINT END



1. FLOW MAY BE IN EITHER DIRECTION
2. VALVE SHAFT WILL MEET OR EXCEED AWWA C504 REQUIREMENTS
3. REFERENCE AWWA C504 FOR FLANGES AND DRILLING (ANSI 125)
4. 29 NUMBER OF TURNS TO CLOSE
5. (6) 3/4" BOLTS ON EACH FLANGE
6. OPERATED BY 2" AWWA OPERATING NUT/WRENCH NUT
7. RATED AND TESTED FOR 150psi WORKING PRESSURE
8. GASKETS, GLANDS AND BOLTS FOR MECHANICAL JOINT FURNISHED WITH VALVE WHEN SPECIFIED ON ORDER

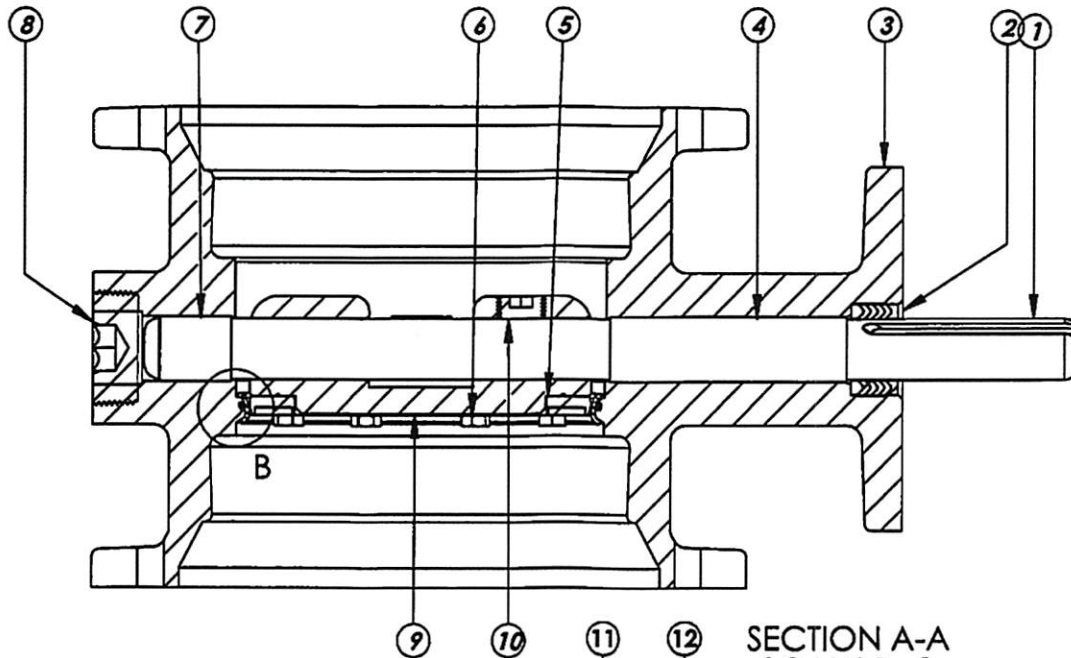
THIS DWG. AND ALL INFORMATION IS OUR PROPERTY AND SHALL NOT BE USED, COPIED, OR REPRODUCED WITHOUT WRITTEN CONSENT. DESIGN AND INVENTION RIGHTS RESERVED.



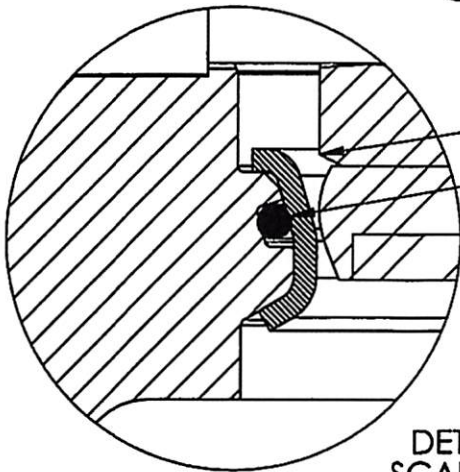
**KENNEDY VALVE**  
 Division of McWane, Inc.  
 1021 East Water St.  
 Elmira, NY 14901

**DRAWN:** CTJ  
**DATE:** 7/1/2020  
**DWG. NO.**  
 BD06-M1-M11-000

**6" - Style 4500 - CL150**  
**BFV with F/A 12 MSS/ISO Connection**  
**MJ ENDS**  
**Buried Operator - OPEN LEFT**



SECTION A-A  
SCALE 1 : 3



DETAIL B  
SCALE 2 : 1

ITEM NO.	DESCRIPTION	MATERIAL
1	VANE SHAFT	304 STAINLESS STEEL, ASTM A-276
2	V-RING PACKING SET	EPDM, BUNA-N
3	BFV BODY	DUCTILE IRON ASTM A-536
4	UPPER JOURNAL BEARING	NYLATRON
5	VANE SEAT RING	EPT with SS INSERT
6	HEX HEAD CAPSCREW	18-8 STAINLESS STEEL with NYLOC PATCH
7	LOWER JOURNAL BEARING	NYLATRON
8	BFV BODY END PLUG	STEEL
9	BFV VANE	DUCTILE IRON ASTM A-536
10	VANE SHAFT TORQUE PLUG	18-8 STAINLESS STEEL
11	BODY SEAT RING	316 STAINLESS STEEL
12	BODY SEAT O-RING	BUNA-N

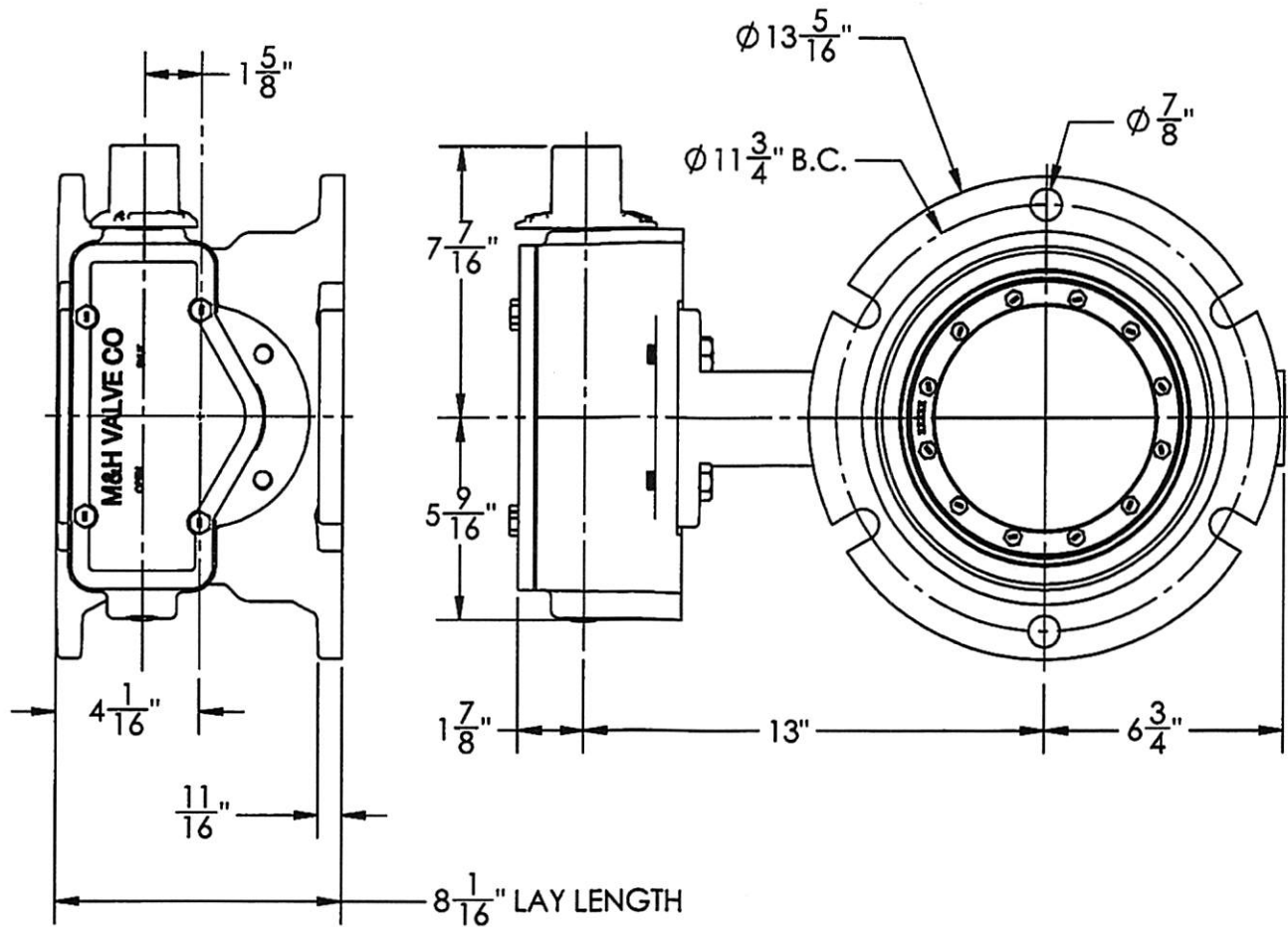
THIS DWG. AND ALL INFORMATION IS OUR PROPERTY AND SHALL NOT BE USED, COPIED, OR REPRODUCED WITHOUT WRITTEN CONSENT. DESIGN AND INVENTION RIGHTS RESERVED.



**KENNEDY VALVE**  
Division of McWane, Inc.  
1021 East Water St.  
Elmira, NY 14901

**DRAWN:** CTJ  
**DATE:** 11/27/2018  
**DWG. NO.** BO6MBB11

**6" AWWA C504 - Style 4500 - CL150  
BFV with F/A 12 MSS/ISO Connection  
Sub-Assembly - Material List  
MJ ENDS**



1. FLOW MAY BE IN EITHER DIRECTION
2. VALVE SHAFT WILL MEET OR EXCEED AWWA C504 REQUIREMENTS
3. REFERENCE AWWA C504 FOR FLANGES AND DRILLING (ANSI 125)
4. 29 TURNS TO CLOSE
5. (6) 3/4" BOLTS ON EACH FLANGE
6. OPERATED BY 2" AWWA OPERATING NUT / WRENCH NUT
7. RATED AND TESTED FOR 150psi WORKING PRESSURE
8. GASKETS, GLANDS AND BOLTS FOR MECHANICAL JOINT FURNISHED WITH VALVE WHEN SPECIFIED ON ORDER

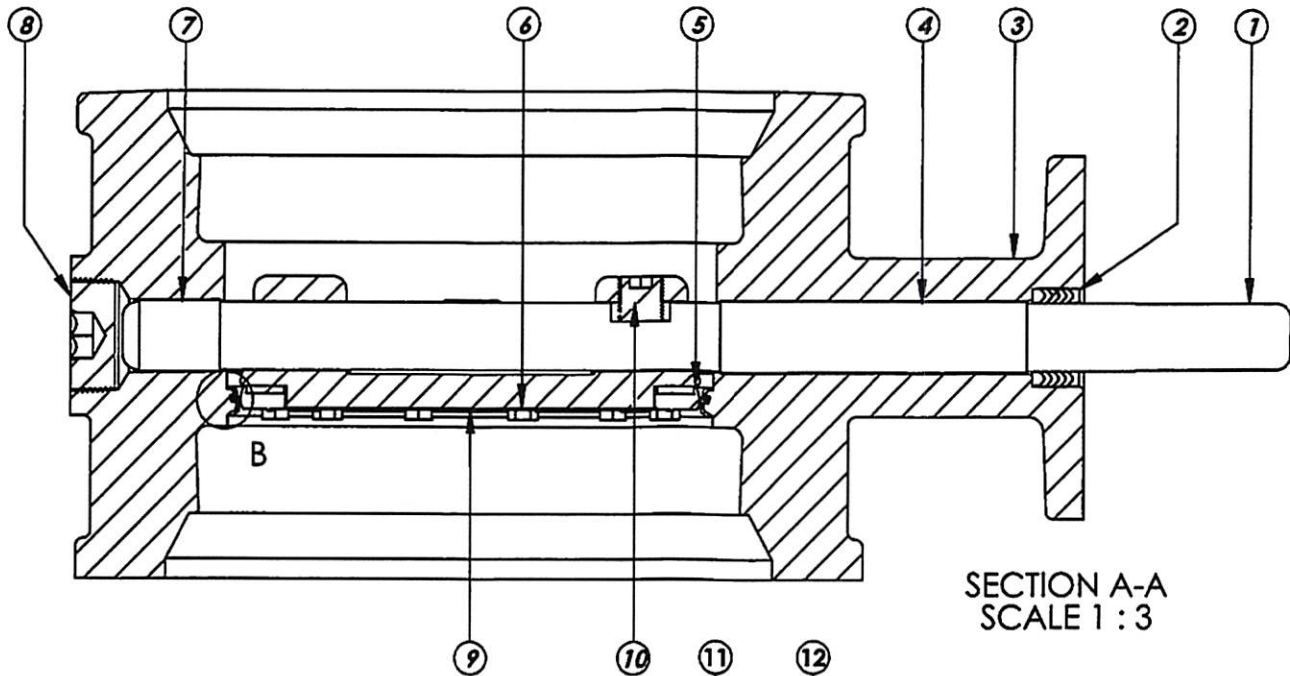
THIS DWG. AND ALL INFORMATION IS OUR PROPERTY AND SHALL NOT BE USED, COPIED, OR REPRODUCED WITHOUT WRITTEN CONSENT. DESIGN AND INVENTION RIGHTS RESERVED.



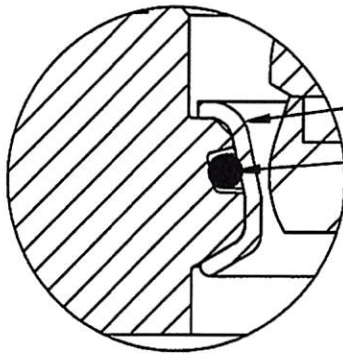
**KENNEDY VALVE**  
 Division of McWane, Inc.  
 1021 East Water St.  
 Elmira, NY 14901

**DRAWN:** CTJ  
**DATE:** 7/2/2020  
**DWG. NO.**  
 BD08-M1-M11-000

**8" - Style 4500 BFV - CL150**  
**F/A 12 MSS/ISO Connection**  
**MECHANICAL JOINT ENDS**  
**Buried Operator - OPEN LEFT**



SECTION A-A  
SCALE 1 : 3



DETAIL B  
SCALE 2 : 1

ITEM NO.	DESCRIPTION	MATERIAL
1	VANE SHAFT	304 STAINLESS STEEL, ASTM A-276
2	V-RING PACKING SET	EPDM, BUNA-N
3	BFV BODY	DUCTILE IRON ASTM A-536
4	UPPER JOURNAL BEARING	NYLATRON
5	VANE SEAT RING	EPT with SS INSERT
6	HEX HEAD CAPSCREW	18-8 STAINLESS STEEL with NYLOC PATCH
7	LOWER JOURNAL BEARING	NYLATRON
8	BFV BODY END PLUG	STEEL
9	BFV VANE	DUCTILE IRON ASTM A-536
10	VANE SHAFT TORQUE PLUG	18-8 STAINLESS STEEL
11	BODY SEAT RING	316 STAINLESS STEEL
12	BODY SEAT O-RING	BUNA-N

THIS DWG. AND ALL INFORMATION IS OUR PROPERTY AND SHALL NOT BE USED, COPIED, OR REPRODUCED WITHOUT WRITTEN CONSENT. DESIGN AND INVENTION RIGHTS RESERVED.



**KENNEDY VALVE**  
Division of McWane, Inc.  
1021 East Water St.  
Elmira, NY 14901

DRAWN: ZF  
DATE: 1/9/17  
DWG. NO. B08MBB11

**8" AWWA C504 - Style 4500 - CL150  
BFV with F/A 12 MSS/ISO Connection  
Sub-Assembly - Material List  
MJ ENDS**



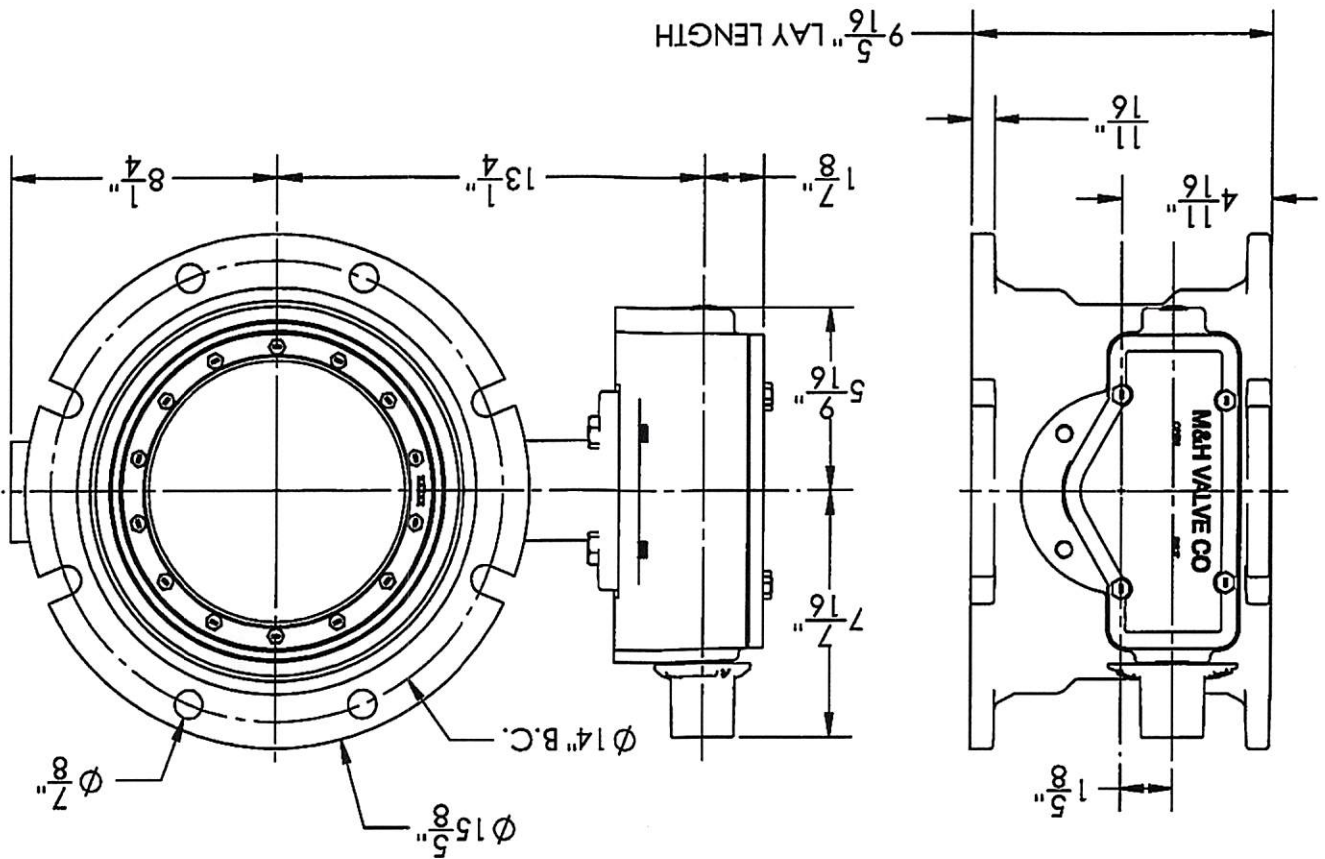
KENNEDY VALVE  
 Division of McWane, Inc.  
 1021 East Water St.  
 Elmhurst, NY 14901

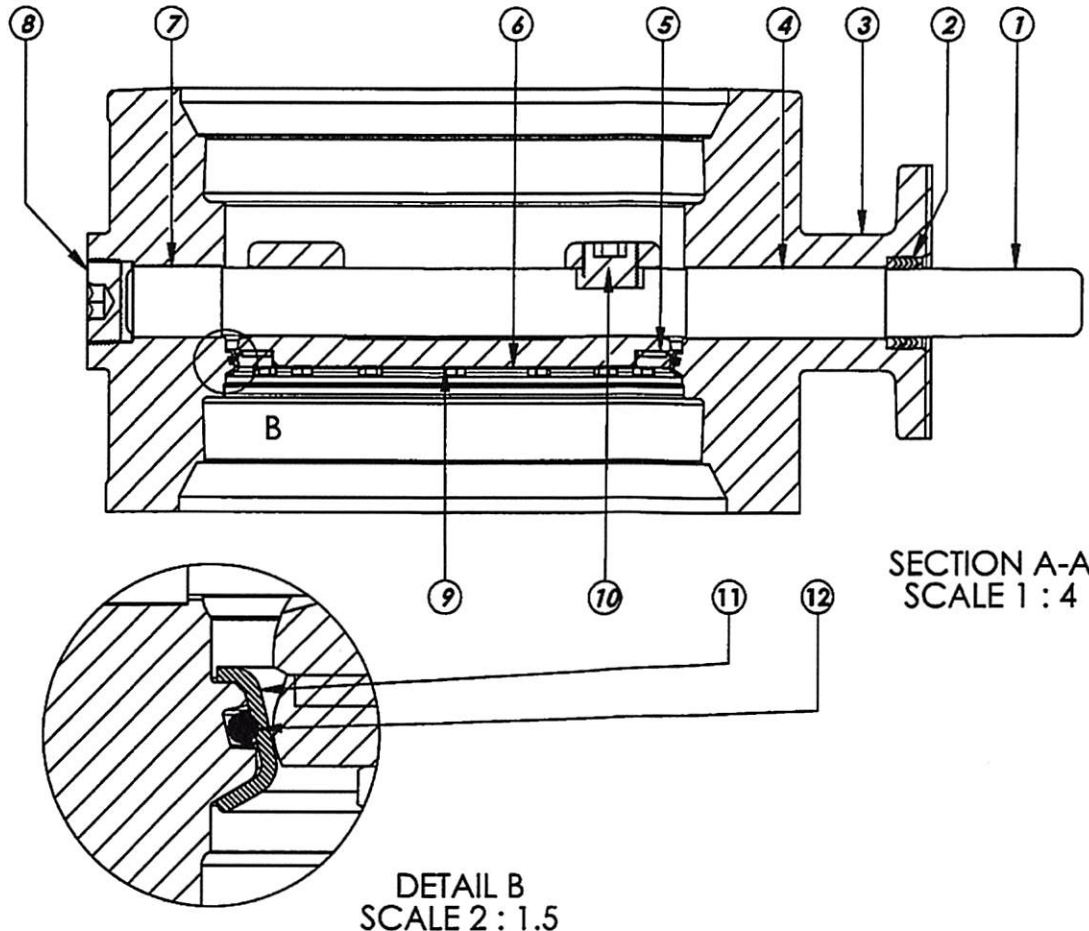
BD10-M1-M31-000  
 DWG. NO.  
 DATE: 7/2/2020  
 CTJ  
 DRAWN:

10" - Style 4500 BFV - CL150  
 F/A 12 MSS/ISO Connection  
 MECHANICAL JOINT ENDS  
 BURIED Operator - OPEN LEFT

THIS DWG. AND ALL INFORMATION IS OUR PROPERTY AND SHALL NOT BE USED, COPIED, OR REPRODUCED WITHOUT WRITTEN CONSENT. DESIGN AND INVENTION RIGHTS RESERVED.

1. FLOW MAY BE IN EITHER DIRECTION
2. VALVE SHAFT WILL MEET OR EXCEED AWWA C504 REQUIREMENTS
3. REFERENCE AWWA C504 FOR FLANGES AND DRILLING (ANSI 125)
4. 29 TURNS TO CLOSE
5. (8) 3/4" BOLTS ON EACH FLANGE
6. OPERATED BY 2" AWWA OPERATING NUT / WRENCH NUT
7. RATED AND TESTED FOR 150psi WORKING PRESSURE
8. GASKETS, GLANDS AND BOLTS FOR MECHANICAL JOINT FURNISHED WITH VALVE WHEN SPECIFIED ON ORDER





SECTION A-A  
SCALE 1 : 4

DETAIL B  
SCALE 2 : 1.5

ITEM NO.	DESCRIPTION	MATERIAL
1	VANE SHAFT	304 STAINLESS STEEL, ASTM A-276
2	V-RING PACKING SET	EPDM, BUNA-N
3	BFV BODY	DUCTILE IRON ASTM A-536
4	UPPER JOURNAL BEARING	NYLATRON
5	VANE SEAT RING	EPT with SS INSERT
6	HEX HEAD CAPSCREW	18-8 STAINLESS STEEL with NYLOC PATCH
7	LOWER JOURNAL BEARING	NYLATRON
8	BFV BODY END PLUG	STEEL
9	BFV VANE	DUCTILE IRON ASTM A-536
10	VANE SHAFT TORQUE PLUG	18-8 STAINLESS STEEL
11	BODY SEAT RING	316 STAINLESS STEEL
12	BODY SEAT O-RING	BUNA-N

THIS DWG. AND ALL INFORMATION IS OUR PROPERTY AND SHALL NOT BE USED, COPIED, OR REPRODUCED WITHOUT WRITTEN CONSENT. DESIGN AND INVENTION RIGHTS RESERVED.

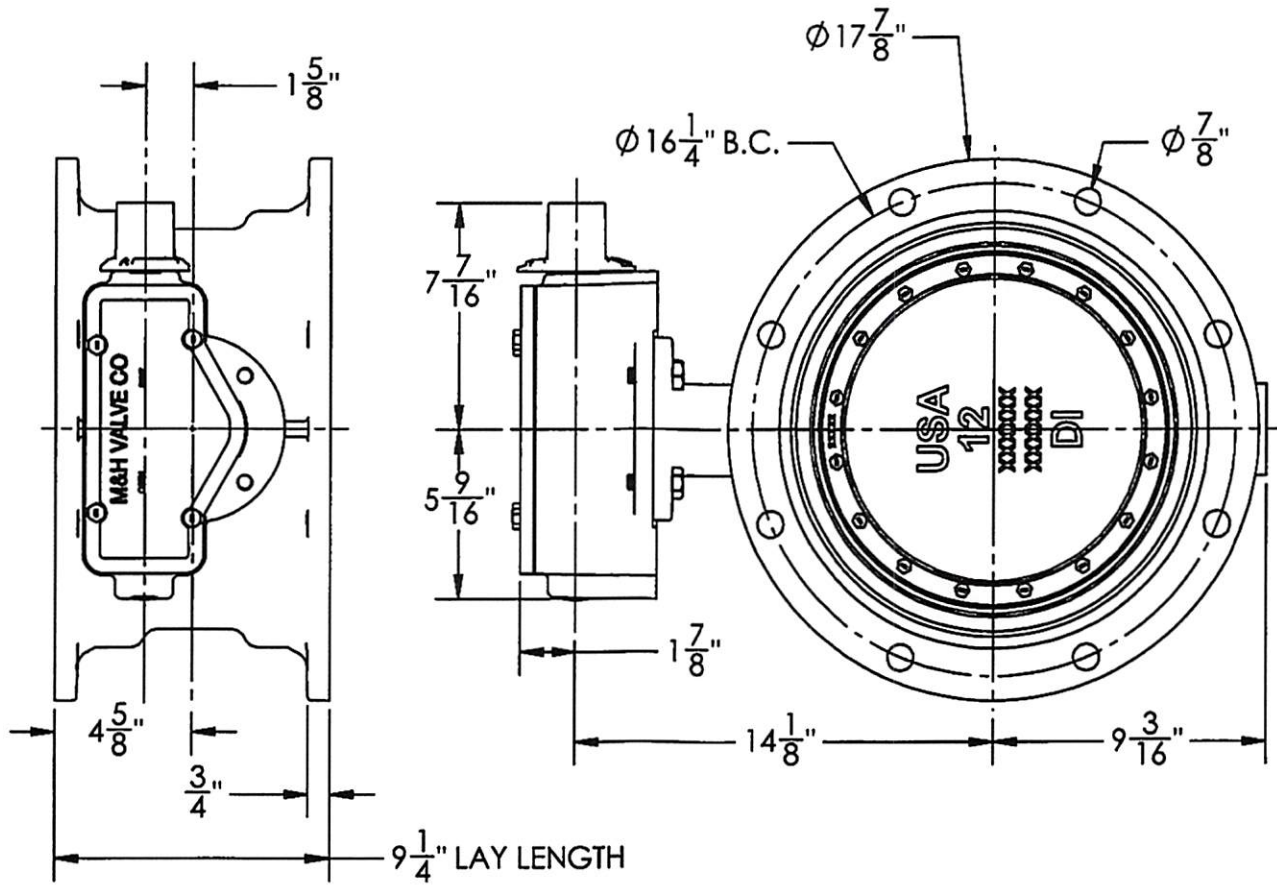


**KENNEDY VALVE**  
Division of McWane, Inc.  
1021 East Water St.  
Elmira, NY 14901

DRAWN: ZF  
DATE: 1/9/17  
DWG. NO. B10MBB11

**10" AWWA C504 - Style 4500 - CL150  
BFV with F/A 12 MSS/ISO Connection  
Sub-Assembly - Material List  
MJ ENDS**





1. FLOW MAY BE IN EITHER DIRECTION
2. VALVE SHAFT WILL MEET OR EXCEED AWWA C504 REQUIREMENTS
3. REFERENCE AWWA C504 FOR FLANGES AND DRILLING (ANSI 125)
4. 29 TURNS TO CLOSE
5. (8)  $3/4$ " BOLTS ON EACH FLANGE
6. OPERATED BY 2" AWWA OPERATING NUT / WRENCH NUT
7. RATED AND TESTED FOR 150psi WORKING PRESSURE
8. GASKETS, GLANDS, AND BOLTS FOR MECHANICAL JOINT FURNISHED WITH VALVE WHEN SPECIFIED ON ORDER

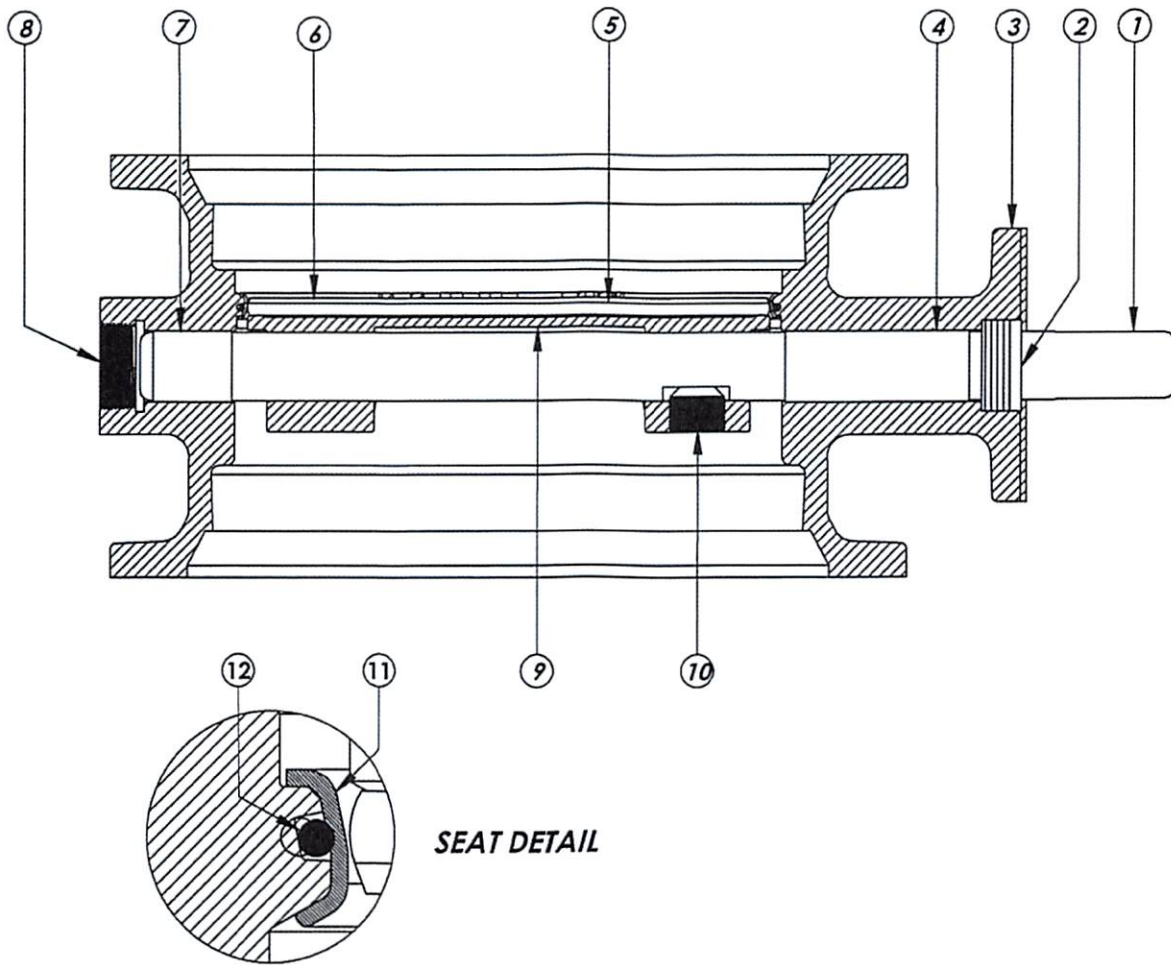
THIS DWG. AND ALL INFORMATION IS OUR PROPERTY AND SHALL NOT BE USED, COPIED, OR REPRODUCED WITHOUT WRITTEN CONSENT. DESIGN AND INVENTION RIGHTS RESERVED.



**KENNEDY VALVE**  
 Division of McWane, Inc.  
 1021 East Water St.  
 Elmira, NY 14901

**DRAWN:** CTJ  
**DATE:** 7/6/2020  
**DWG. NO.**  
 BD12-M1-M11-000

**12" - Style 4500 BFV - CL150**  
**F/A12 MSS/ISO Connection**  
**MECHANICAL JOINT ENDS**  
**Buried Operator - Open Left**



ITEM NO.	DESCRIPTION	MATERIAL
1	VANE SHAFT	304 STAINLESS STEEL, ASTM A-276
2	V-RING PACKING	EPDM, BUNA-N
3	BFV BODY	DUCTILE IRON ASTM A-536
4	UPPER JOURNAL BEARING	NYLATRON
5	VANE SEAT RING	EPT w/ SS INSERT
6	HEX HEAD CAP SCREW	18-8 STAINLESS STEEL w/ NYLOC PATCH
7	LOWER JOURNAL BEARING	NYLATRON
8	BFV BODY END PLUG	STEEL
9	BFV VANE	DUCTILE IRON ASTM A-536
10	VANE SHAFT TORQUE PLUG	18-8 STAINLESS STEEL
11	BODY SEAT RING	316 STAINLESS STEEL
12	BODY SEAT O-RING	BUNA-N

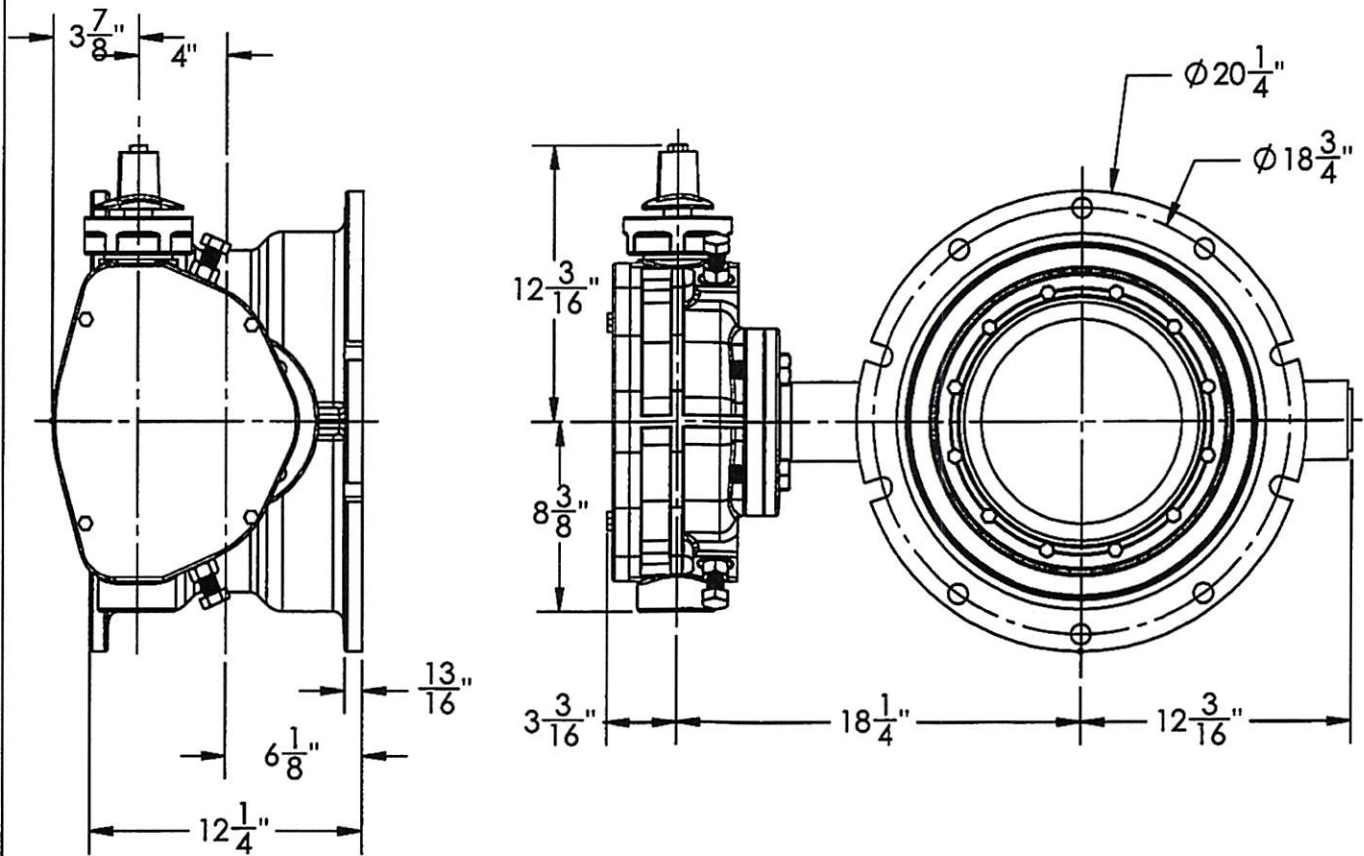
THIS DWG. AND ALL INFORMATION IS OUR PROPERTY AND SHALL NOT BE USED, COPIED, OR REPRODUCED WITHOUT WRITTEN CONSENT. DESIGN AND INVENTION RIGHTS RESERVED.



**KENNEDY VALVE**  
 Division of McWane, Inc.  
 1021 East Water St.  
 Elmira, NY 14901

DRAWN: KLM  
 DATE: 10/2016  
 DWG. NO.  
 B12MBB11

**12" AWWA C504 - Style 4500 - CL150  
 BFV with F/A 12 MSS/ISO Connection  
 Sub-Assembly - Material List  
 MECHANICAL JOINT**



1. FLOW MAY BE IN EITHER DIRECTION
2. VALVE SHAFT WILL MEET OR EXCEED AWWA C504 STANDARDS
3. 48 TURNS TO CLOSE
4. 12 BOLTS ON EACH FLANGE
5. 3/4" DIA. OF BOLTS
6. OPERATED BY 2" AWWA OPERATING NUT/WRENCH NUT
7. RATED AND TESTED FOR 150psi WORKING PRESSURE
8. GASKETS, GLANDS, AND BOLTS FOR MECHANICAL JOINT FURNISHED WITH VALVE WHEN SPECIFIED ON ORDER
9. WEIGHT OF VALVE IS 450 LBS.

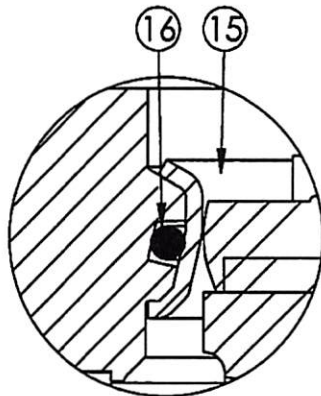
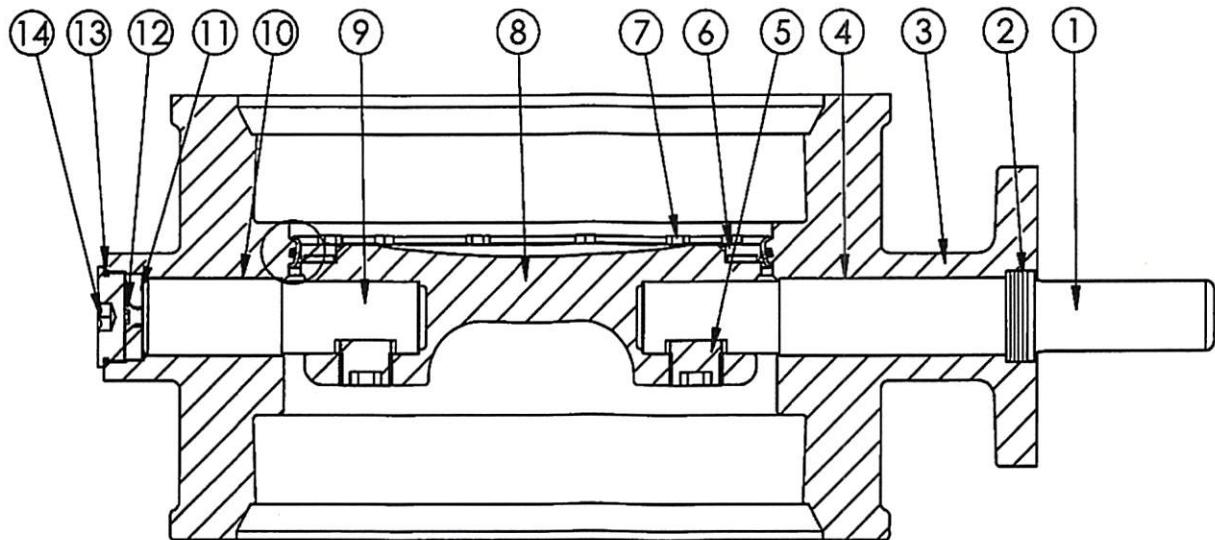
THIS DWG. AND ALL INFORMATION IS OUR PROPERTY AND SHALL NOT BE USED, COPIED, OR REPRODUCED WITHOUT WRITTEN CONSENT. DESIGN AND INVENTION RIGHTS RESERVED.



**KENNEDY VALVE**  
 Division of McWane, Inc.  
 1021 East Water St.  
 Elmira, NY 14901

**DRAWN:** CTJ  
**DATE:** 11/26/18  
**DWG. NO.** B14MAM11

14" - Style 4500 - CL150  
 BFV with F/A 14 MSS/ISO Connection-  
 MECHANICAL JOINT - Buried Operator



**SEAT DETAIL**

ITEM NO.	DESCRIPTION	MATERIAL
1	OPERATOR SHAFT	304 STAINLESS STEEL, ASTM A-276
2	V-RING PACKING SET	EPDM, BUNA-N
3	BFV BODY	DUCTILE IRON ASTM A-536
4	UPPER JOURNAL BEARING	FIBER & REINFORCED TEFLON
5	TORQUE PLUG	304 STAINLESS STEEL, ASTM A-276
6	VANE SEAT RING	EPT W/ STAINLESS STEEL INSERT
7	HEX HEAD CAP SCREW	18-8 STAINLESS STEEL W/ NYLOC PATCH
8	BFV VANE	DUCTILE IRON ASTM A-276
9	THRUST SHAFT	304 STAINLESS STEEL, ASTM A-276
10	LOWER JOURNAL BEARING	FIBER & REINFORCED TEFLON
11	THRUST BEARING	BRONZE ALLOY
12	THRUST BEARING CAP SCREW	18-8 STAINLESS STEEL
13	BODY END PLUG O-RING	BUNA-N
14	BODY END PLUG	STEEL
15	BODY SEAT RING	316 STAINLESS STEEL
16	BODY SEAT O-RING	BUNA-N

THIS DWG. AND ALL INFORMATION IS OUR PROPERTY AND SHALL NOT BE USED, COPIED, OR REPRODUCED WITHOUT WRITTEN CONSENT. DESIGN AND INVENTION RIGHTS RESERVED.



**KENNEDY VALVE**  
 Division of McWane, Inc.  
 1021 East Water St.  
 Elmira, NY 14901

**DRAWN:** ZF  
**DATE:** 8/31/2018  
**DWG. NO.**  
 B14MBB11

14" AWWA C504 - STYLE 4500 - CL150  
 BFV w/ F/A16 MSS/ISO CONNECTION  
 SUB-ASSEMBLY - MATERIAL LIST  
 MECHANICAL JOINT ENDS



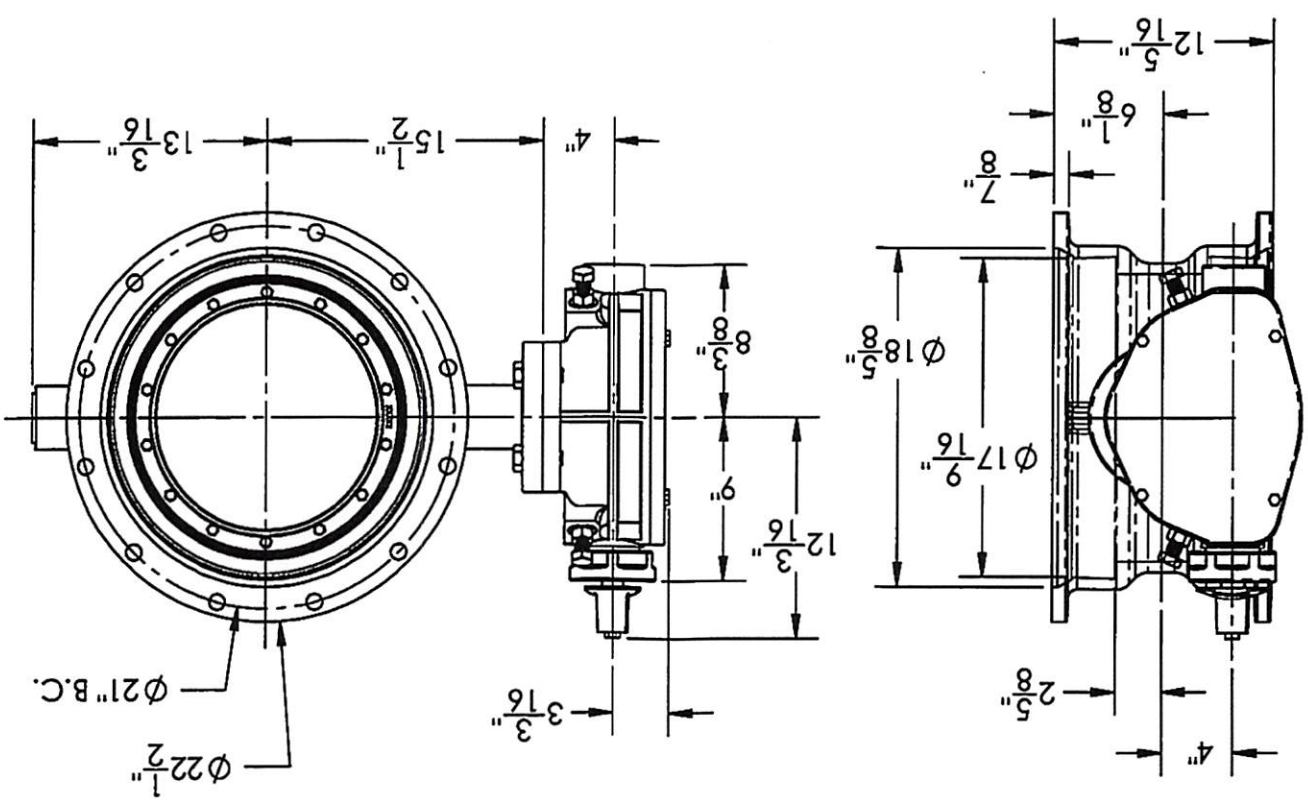
**KENNEDY VALVE**  
 Division of McVane, Inc.  
 1021 East Water St.  
 Elmira, NY 14901

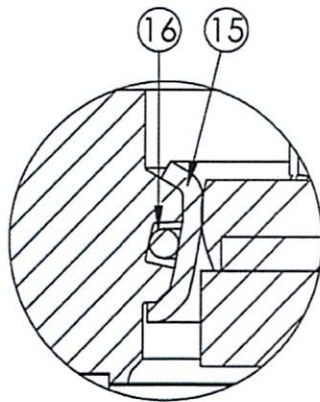
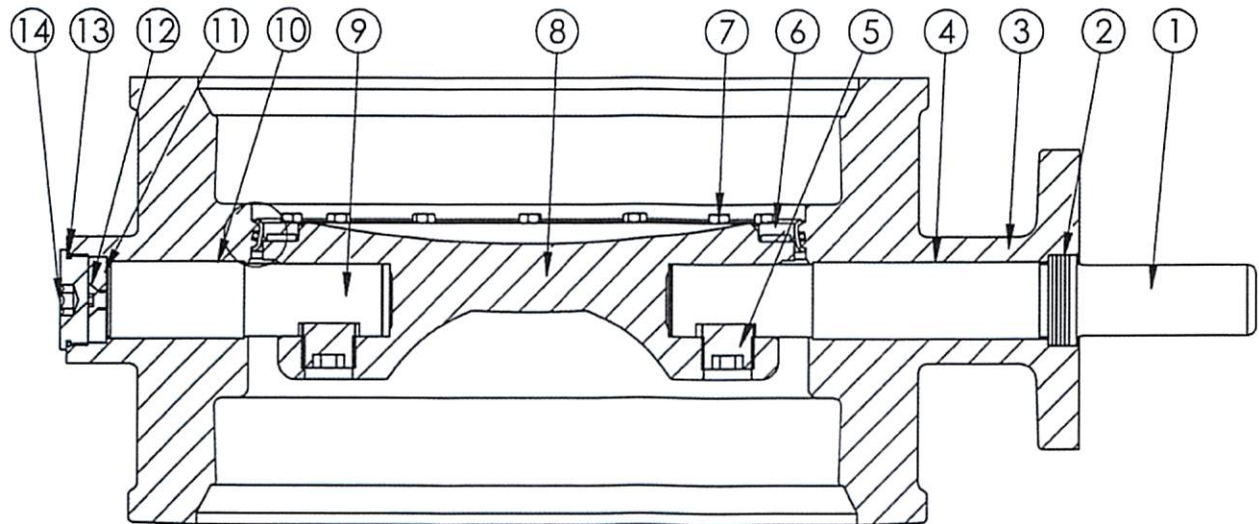
**DRAWN: CJJ**  
**DATE: 11/26/2018**  
**DWG. NO. B16MAM11**

**16" - Style 4500 - CL150**  
**BFV with F/A 14 MSS/ISO Connection-**  
**MECHANICAL JOINT - Buried Operator**

THIS DWG. AND ALL INFORMATION IS OUR PROPERTY AND SHALL NOT BE USED, COPIED, OR REPRODUCED WITHOUT WRITTEN CONSENT. DESIGN AND DIMENSION RIGHTS RESERVED.

1. FLOW MAY BE IN EITHER DIRECTION
2. VALVE SHAFT WILL MEET OR EXCEED AWWA C504 STANDARDS
3. 48 TURNS TO CLOSE
4. 12 BOLTS ON EACH FLANGE
5. 3/4" DIA. OF BOLTS
6. OPERATED BY 2" AWWA OPERATING NUT/WRENCH NUT
7. RATED AND TESTED FOR 150psi WORKING PRESSURE
8. GASKETS, GLANDS, AND BOLTS FOR MECHANICAL JOINT FURNISHED WITH VALVE WHEN SPECIFIED ON ORDER
9. WEIGHT OF VALVE IS 450 LBS.





**SEAT DETAIL**

ITEM NO.	DESCRIPTION	MATERIAL
1	OPERATOR SHAFT	304 STAINLESS STEEL, ASTM A-276
2	V-RING PACKING SET	EPDM, BUNA-N
3	BFV BODY	DUCTILE IRON ASTM A-536
4	UPPER JOURNAL BEARING	FIBER & REINFORCED TEFLON
5	TORQUE PLUG	304 STAINLESS STEEL, ASTM A-276
6	VANE SEAT RING	EPT W/ STAINLESS STEEL INSERT
7	HEX HEAD CAP SCREW	18-8 STAINLESS STEEL W/ NYLOC PATCH
8	BFV VANE	DUCTILE IRON ASTM A-276
9	THRUST SHAFT	304 STAINLESS STEEL, ASTM A-276
10	LOWER JOURNAL BEARING	FIBER & REINFORCED TEFLON
11	THRUST BEARING	BRONZE ALLOY
12	THRUST BEARING CAP SCREW	18-8 STAINLESS STEEL
13	BODY END PLUG O-RING	BUNA-N
14	BODY END PLUG	STEEL
15	BODY SEAT RING	316 STAINLESS STEEL
16	BODY SEAT O-RING	BUNA-N

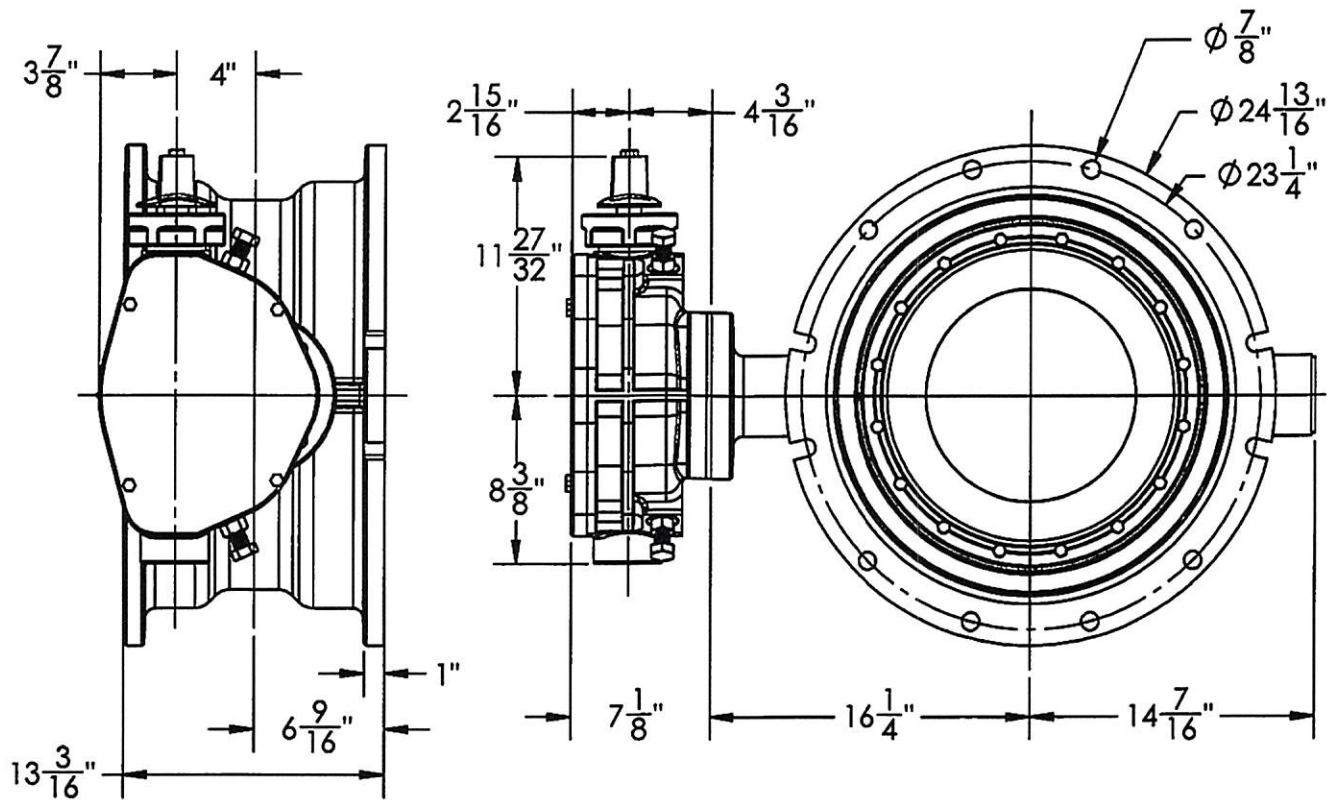
THIS DWG. AND ALL INFORMATION IS OUR PROPERTY AND SHALL NOT BE USED, COPIED, OR REPRODUCED WITHOUT WRITTEN CONSENT. DESIGN AND INVENTION RIGHTS RESERVED.



**KENNEDY VALVE**  
 Division of McWane, Inc.  
 1021 East Water St.  
 Elmira, NY 14901

DRAWN: ZF  
 DATE: 8/31/2018  
 DWG. NO. B16MBB11

16" AWWA C504 - STYLE 4500 - CL150  
 BFV w/ F/A16 MSS/ISO CONNECTION  
 SUB-ASSEMBLY - MATERIAL LIST  
 MECHANICAL JOINT ENDS



1. FLOW MAY BE IN EITHER DIRECTION
2. VALVE SHAFT WILL MEET OR EXCEED AWWA C504 STANDARDS
3. 48 TURNS TO CLOSE
4. 16 BOLTS ON EACH FLANGE
5. 3/4" DIA. OF BOLTS
6. OPERATED BY 2" AWWA OPERATING NUT/WRENCH NUT
7. RATED AND TESTED FOR 150psi WORKING PRESSURE
8. GASKETS, GLANDS, & BOLTS FOR MECH. JOINT FURNISHED w/ VALVE WHEN SPECIFIED ON ORDERS
9. WEIGHT OF VALVE IS 450 LBS.

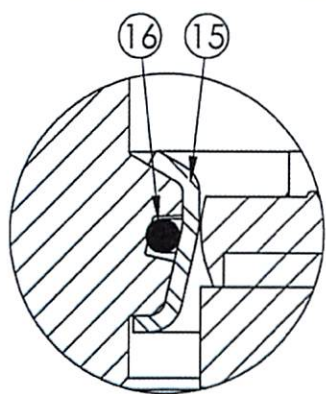
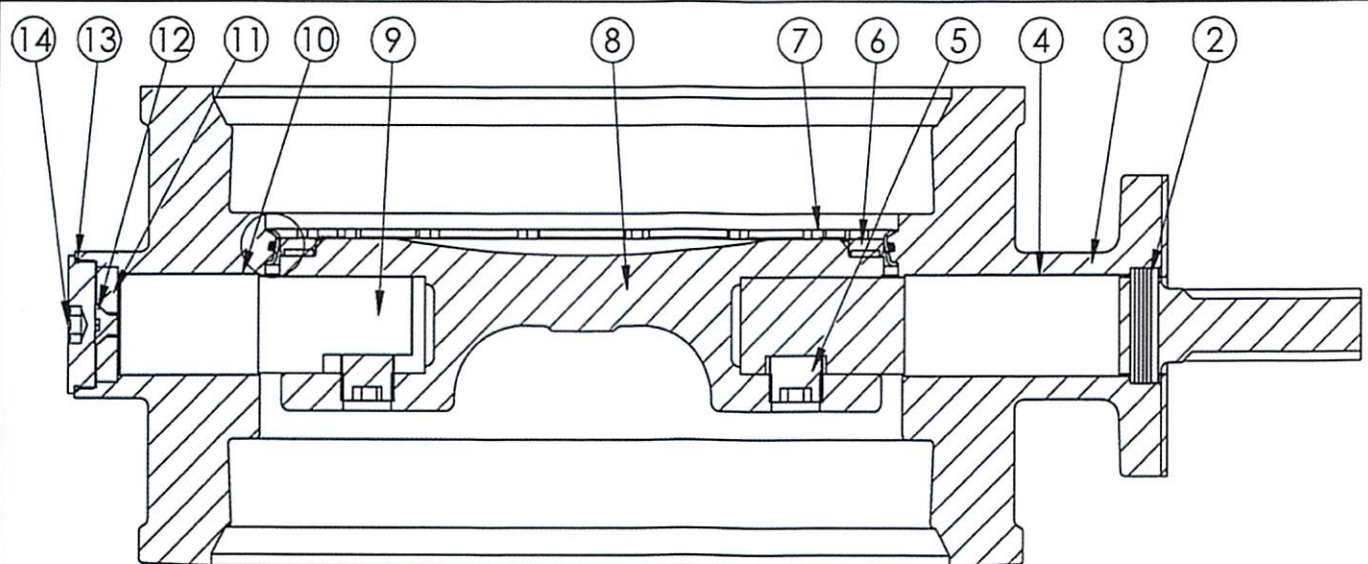
THIS DWG. AND ALL INFORMATION IS OUR PROPERTY AND SHALL NOT BE USED, COPIED, OR REPRODUCED WITHOUT WRITTEN CONSENT. DESIGN AND INVENTION RIGHTS RESERVED.



**KENNEDY VALVE**  
 Division of McWane, Inc.  
 1021 East Water St.  
 Elmira, NY 14901

**DRAWN:** CTJ  
**DATE:** 11/27/2018  
**DWG. NO.** B18MAM11

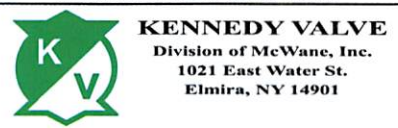
18" - Style 4500 - CL150  
 BFV with F/A16 MSS/ISO Connection-  
 MJ x MJ ENDS - Buried Operator



**SEAT DETAIL**

<b>ITEM NO.</b>	<b>DESCRIPTION</b>	<b>MATERIAL</b>
1	OPERATOR SHAFT	304 STAINLESS STEEL, ASTM A-276
2	V-RING PACKING SET	EPDM, BUNA-N
3	BFV BODY	DUCTILE IRON ASTM A-536
4	UPPER JOURNAL BEARING	FIBER & REINFORCED TEFLON
5	TORQUE PLUG	304 STAINLESS STEEL, ASTM A-276
6	VANE SEAT RING	EPT W/ STAINLESS STEEL INSERT
7	HEX HEAD CAP SCREW	18-8 STAINLESS STEEL W/ NYLOC PATCH
8	BFV VANE	DUCTILE IRON ASTM A-276
9	THRUST SHAFT	304 STAINLESS STEEL, ASTM A-276
10	LOWER JOURNAL BEARING	FIBER & REINFORCED TEFLON
11	THRUST BEARING	BRONZE ALLOY
12	THRUST BEARING CAP SCREW	18-8 STAINLESS STEEL
13	BODY END PLUG O-RING	BUNA-N
14	BODY END PLUG	STEEL
15	BODY SEAT RING	316 STAINLESS STEEL
16	BODY SEAT O-RING	BUNA-N

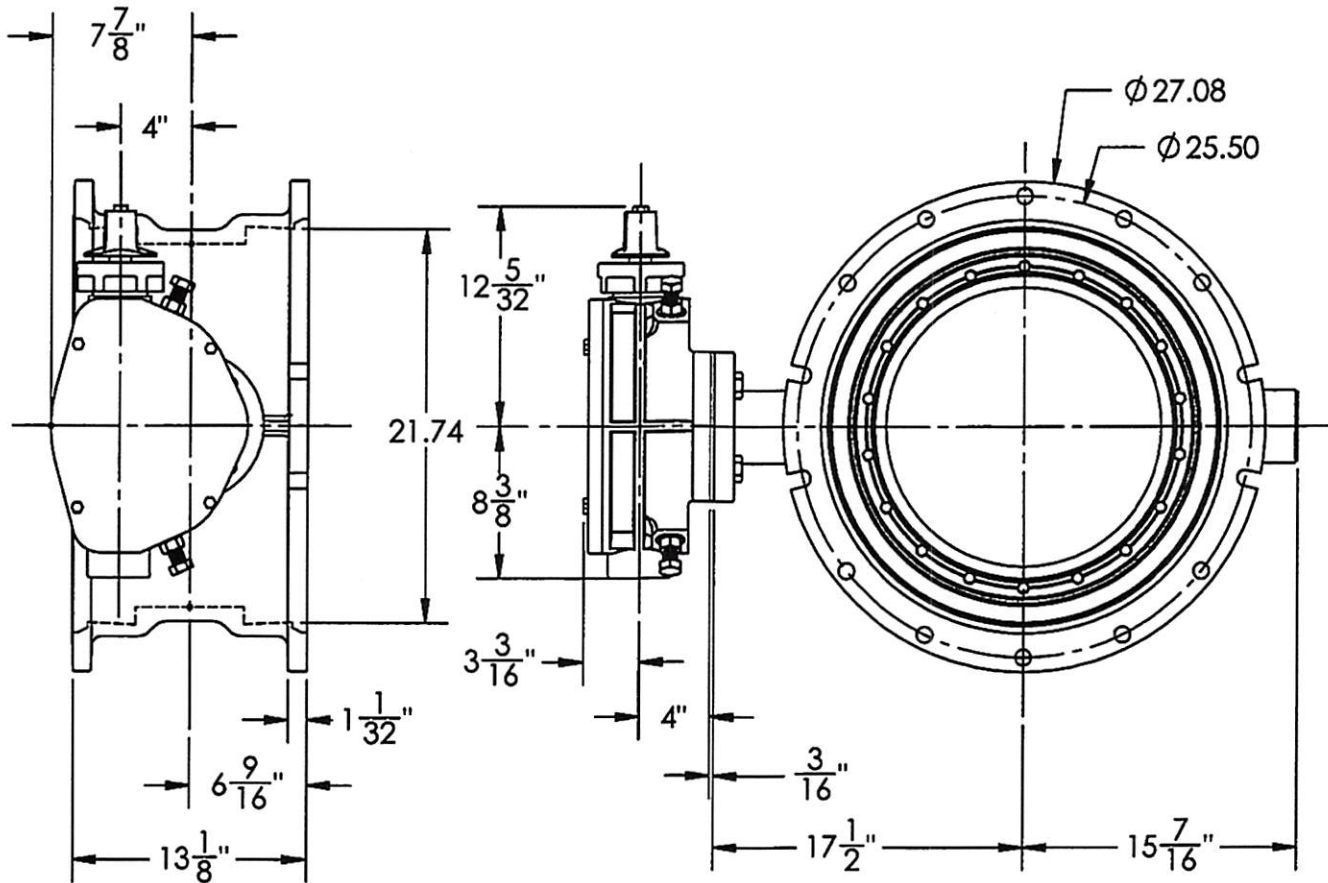
THIS DWG. AND ALL INFORMATION IS OUR PROPERTY AND SHALL NOT BE USED, COPIED, OR REPRODUCED WITHOUT WRITTEN CONSENT. DESIGN AND INVENTION RIGHTS RESERVED.



**DRAWN:** ZF  
**DATE:** 8/31/2018  
**DWG. NO.** B18MBB11

18" AWWA C504 - STYLE 4500 - CL150  
 BFV w/ F/A16 MSS/ISO CONNECTION  
 SUB-ASSEMBLY - MATERIAL LIST  
 MJ ENDS





1. FLOW MAY BE IN EITHER DIRECTION
2. VALVE SHAFT WILL MEET OR EXCEED AWWA C504 REQUIREMENTS
3. NUMBER OF TURNS TO CLOSE: 48
4. NUMBER OF BOLTS ON EACH FLANGE: 14
5. DIAMETER OF BOLTS: 3/4
6. INSIDE DIAMETER OF VALVE HUB: 21.74"
7. OPERATED BY 2" AWWA OPERATING NUT/WRENCH NUT
8. RATED AND TESTED FOR 150psi WORKING PRESSURE
9. GASKETS, GLANDS, AND BOLTS FOR MECHANICAL JOINT FURNISHED WITH VALVE SPECIFIED ON ORDER

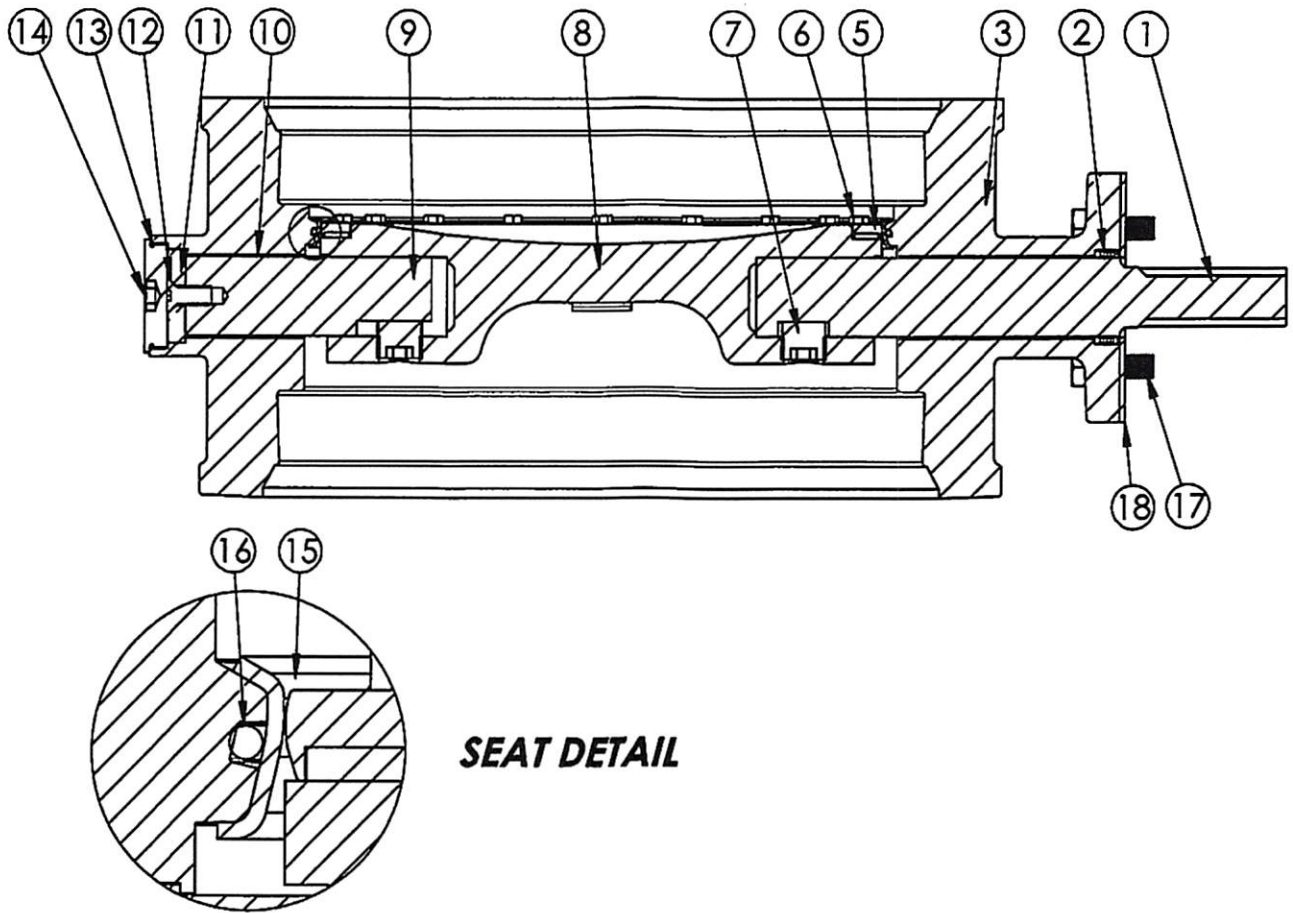
THIS DWG. AND ALL INFORMATION IS OUR PROPERTY AND SHALL NOT BE USED, COPIED, OR REPRODUCED WITHOUT WRITTEN CONSENT. DESIGN AND INVENTION RIGHTS RESERVED.



**KENNEDY VALVE**  
 Division of McWane, Inc.  
 1021 East Water St.  
 Elmira, NY 14901

**DRAWN:** CTJ  
**DATE:** 11/26/2018  
**DWG. NO.** B20MAM11

**20" - Style 4500 - CL150**  
**BFV with 1250 F/A16 MSS/ISO Connection-**  
**Mechanical Joint - Buried Operator**



**SEAT DETAIL**

<b>ITEM NO.</b>	<b>DESCRIPTION</b>	<b>MATERIAL</b>
1	OPERATOR SHAFT	304 STAINLESS STEEL, ASTM A-276
2	V-RING PACKING SET	EPDM, BUNA-N
3	BFV BODY	DUCTILE IRON ASTM A-536
4	UPPER JOURNAL BEARING	FIBER & REINFORCED TEFLON
5	VANE SEAT RING	EPT W/ STAINLESS STEEL INSERT
6	HEX HEAD CAP SCREW	18-8 STAINLESS STEEL W/ NYLOC PATCH
7	TORQUE PLUG	304 STAINLESS STEEL, ASTM A-276
8	BFV VANE	DUCTILE IRON ASTM A-536
9	THRUST SHAFT	304 STAINLESS STEEL, ASTM A-276
10	LOWER JOURNAL BEARING	FIBER & REINFORCED TEFLON
11	THRUST BEARING	BRONZE ALLOY
12	THRUST BEARING CAP SCREW	18-8 STAINLESS STEEL
13	BODY END PLUG O-RING	BUNA-N
14	BODY END PLUG	STEEL
15	BODY SEAT RING	316 STAINLESS STEEL
16	BODY SEAT O-RING	BUNA-N
17	OPERATOR MOUNTING BOLTS	18-8 STAINLESS STEEL
18	ISO FA16 SEAL PLATE	COMMERCIAL STEEL

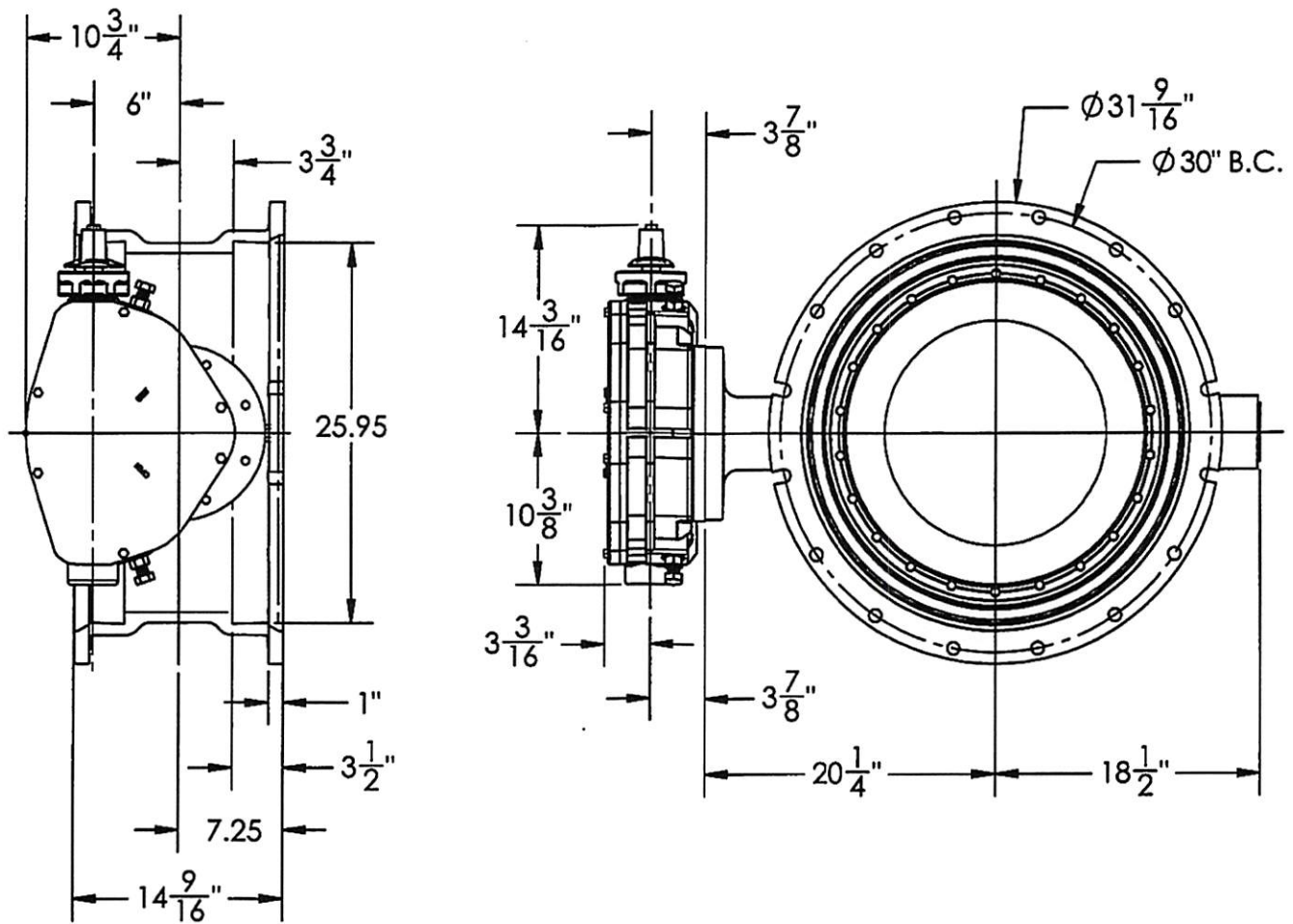
THIS DWG. AND ALL INFORMATION IS OUR PROPERTY AND SHALL NOT BE USED, COPIED, OR REPRODUCED WITHOUT WRITTEN CONSENT. DESIGN AND INVENTION RIGHTS RESERVED.



**KENNEDY VALVE**  
 Division of McWane, Inc.  
 1021 East Water St.  
 Elmira, NY 14901

**DRAWN:** ZF  
**DATE:** 9/27/2018  
**DWG. NO.:** B20MBB11

20" AWWA C504 - STYLE 4500 - CL150  
 BFV w/ F/A16 MSS/ISO CONNECTION  
 SUB-ASSEMBLY - MATERIAL LIST  
 MECHANICAL JOINT ENDS



1. FLOW MAY BE IN EITHER DIRECTION
2. 72 TURNS TO CLOSE
3. VALVE SHAFT WILL MEET OR EXCEED AWWA C504 REQUIREMENTS
4. NUMBER OF TURNS TO CLOSE
5. (16)  $\frac{3}{4}$ " BOLTS ON EACH FLANGE
6. OPERATED BY 2" AWWA OPERATING NUT / WRENCH NUT
7. RATED AND TESTED FOR 150psi WORKING PRESSURE
8. GASKETS, GLANDS, AND BOLTS FOR MECHANICAL JOINT FURNISHED WITH VALVE WHEN SPECIFIED ON ORDERS
9. VALVE WEIGHT IS 800 LBS.

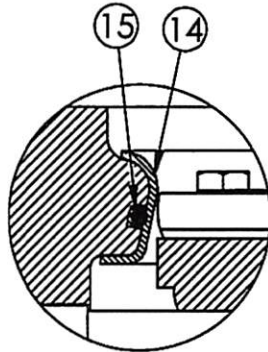
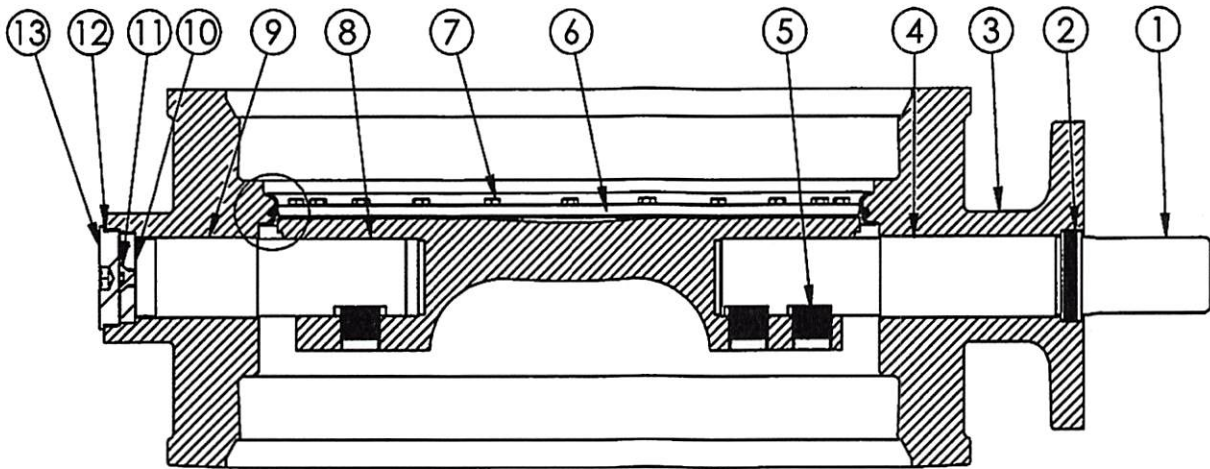
THIS DWG. AND ALL INFORMATION IS OUR PROPERTY AND SHALL NOT BE USED, COPIED, OR REPRODUCED WITHOUT WRITTEN CONSENT. DESIGN AND INVENTION RIGHTS RESERVED.



**KENNEDY VALVE**  
 Division of McWane, Inc.  
 1021 East Water St.  
 Elmira, NY 14901

**DRAWN:** CTJ  
**DATE:** 11/26/2018  
**DWG. NO.**  
 B24MAM11

24" AWWA C504 - STYLE 4500 - CL150  
 BFV w/ F/A25 MSS/ISO CONNECTION  
 SUB-ASSEMBLY - DIMENSIONS  
 MECHANICAL JOINT



**SEAT DETAIL**

ITEM NO.	DESCRIPTION	MATERIAL
1	OPERATOR SHAFT	304 STAINLESS STEEL, ASTM A-276
2	V-RING PACKING SET	EPDM, BUNA-N
3	BFV BODY	DUCTILE IRON ASTM A-536
4	UPPER JOURNAL BEARING	FIBER & REINFORCED TEFLON
5	TORQUE PLUG	304 STAINLESS STEEL, ASTM A-276
6	VANE SEAT RING	EPT W/ STAINLESS STEEL INSERT
7	HEX HEAD CAP SCREW	18-8 STAINLESS STEEL W/ NYLOC PATCH
8	THRUST SHAFT	304 STAINLESS STEEL, ASTM A-276
9	LOWER JOURNAL BEARING	FIBER & REINFORCED TEFLON
10	THRUST BEARING	BRONZE ALLOY
11	THRUST BEARING CAP SCREW	18-8 STAINLESS STEEL
12	BODY END PLUG O-RING	EPDM
13	BODY END PLUG	STEEL
14	BODY SEAT RING	316 STAINLESS STEEL
15	BODY SEAT O-RING	BUNA-N

THIS DWG. AND ALL INFORMATION IS OUR PROPERTY AND SHALL NOT BE USED, COPIED, OR REPRODUCED WITHOUT WRITTEN CONSENT. DESIGN AND INVENTION RIGHTS RESERVED.



**KENNEDY VALVE**  
 Division of McWane, Inc.  
 1021 East Water St.  
 Elmira, NY 14901

**DRAWN:** ZF  
**DATE:** 6/28/18  
**DWG. NO.**  
 BMJ-15-45-24-ISO

24" AWWA C504 - STYLE 4500 - CL150  
 BFV w/ F/A25 MSS/ISO CONNECTION  
 SUB-ASSEMBLY - MATERIAL LIST  
 MECHANICAL JOINT