

NO	QTY	PART DESCRIPTION	MATERIAL	NOTES
1A	1	SIDE PLUG	BRONZE	-
2A	A/R	HEX BOLT	16-8 S.S.	ASTM F593C
3A	1	O-RING	SYN. RUB.	ASTM A 126B
4A	1	CHECK VALVE CAP	GRAY, CAST IRON	ASTM A 126B
5A	1	BODY	GRAY, CAST IRON	-
8AA	1	DISC BOLT-FIG 1106 (Metal to Metal)	BRONZE	Sizes 10" & 12" FIG 106
8AA	-	-	STEEL	Sizes 4"-8" FIG 106
8AB	1	DISC BOLT-FIG 1106A (Resilient)	BRONZE	(N/A Sizes 2"-3", INTERNAL W/DISC)
8AB	-	-	-	Sizes 4"-12" FIG 106A
9AA	1	DISC BOLT O-RING	BUNA-N	(N/A Sizes 10" & 12"
9AA	1	FIG 1106A DISC BOLT O-RING	BUNA	(N/A Sizes 2"-3")
9AB	2	DISC BOLT CASKET	FIBRE	Sizes 4"-8"
10A	1	FIG 1106A-DISC HOLDER	GRAY, CAST IRON	Sizes 4" - 12" (ex 8")
10A	-	-	DUCTILE IRON	8" size
10A	1	FIG 1106A DISC HOLDER with INTERIORAL BOLT	BRONZE	Sizes 2"-3"
11A	1	FIG 1106A-DISC PLATE	BRONZE	-
12AA	1	FIG 1106A - REPLACABLE RUBBER DISC	RUBBER	-
12AB	1	FIG 1106-DISC-WITH INTERIORAL BRONZE RING	GRAY, CAST IRON	Sizes 4"-12" FIG 106
12AB	1	FIG 1106 DISC w/ INTERIORAL BOLT & RING	BRONZE	Sizes 2"-3"
13A1	1	FIG 1106 HEX NUT-DISC	STEEL, PLATED	Sizes 2" - 12" Metal to Metal
13A2	1	FIG 1106A HEX NUT-DISC HOLDER	BRONZE	2 NUTS for SIZES 2"-3" FIG 106A
14AA	1	FIG 1106 DISC RING-INTERIORAL With DISC	BRONZE	Sizes 4"-12"
15A	1	SEAT RING	BRONZE	12 - 3" SOLID BRONZE DISC)
15A	-	-	-	ASTM B584 ED4844 to ANNA "A"
18A	2	KEY	-	-
20AB	1	LEVER ARM (FOR L/W)	STEEL	-
24A	1	SIDE PLUG STUFFING BOX	BRONZE	B16
25A	-	PACKING	NON ASBESTOS	-
26A	1	GLAND	BRONZE	B16
28A	1	LEVER SET SCREW	STEEL	-

**NOTE**

FIGURE 1107(A) UTILIZE THE UL/FM VERSION CHECK VALVE BODY TO ACHIEVE THE SHORTER END TO END LENGTHS. THE 1107(A) VALVES UTILIZE THE SAME COMPONENTS (LEVER SPRING OR WEIGHT) AS THE REGULAR A.W.W.A. VERSION CHECK VALVE. ALL BODY MARKINGS (UL, FM AND ANNA) WILL NOT BE PRESENT ON THE CASTINGS.

SIZE	DA LG	FLG THK	FLG OD	DA HT	COVER OD	LEVER LG	CL to PIN END	PIN DIA	WALL THK	CL TO OUTSIDE WEIGHT	K (REF)
2 1/2	10	0.72	7	6.63	7	6	4.94	0.50	0.41	6.6	
3	10.25	0.78	7.5	7.06	7.5	6	5.35	0.50	0.44	7.4	
4	13	1.00	9	8.31	9	8.25	8.19	0.63	0.50	10.1	
6	16	1.06	11	10.05	11	10.25	9	0.75	0.62	10.9	
8	19	1.25	13.5	12.38	13.5	14.5	10.19	0.88	0.75	12.4	
10	22	1.31	16	13.93	16.75	18	11.63	1.00	0.81	14.7	
12	26	1.38	19	16.18	19	18	13.75	1.00	0.88	16.0	

**BODY MARKING**

OTHER SIDE	THIS SIDE
←	→
YEAR FIG 1--	KENNEDY Size-175

**KENNEDY VALVE**  
ELMIRA, N.Y. 14901

Do Not Scale  
6" Valve Shown  
(Plot at 0.4)

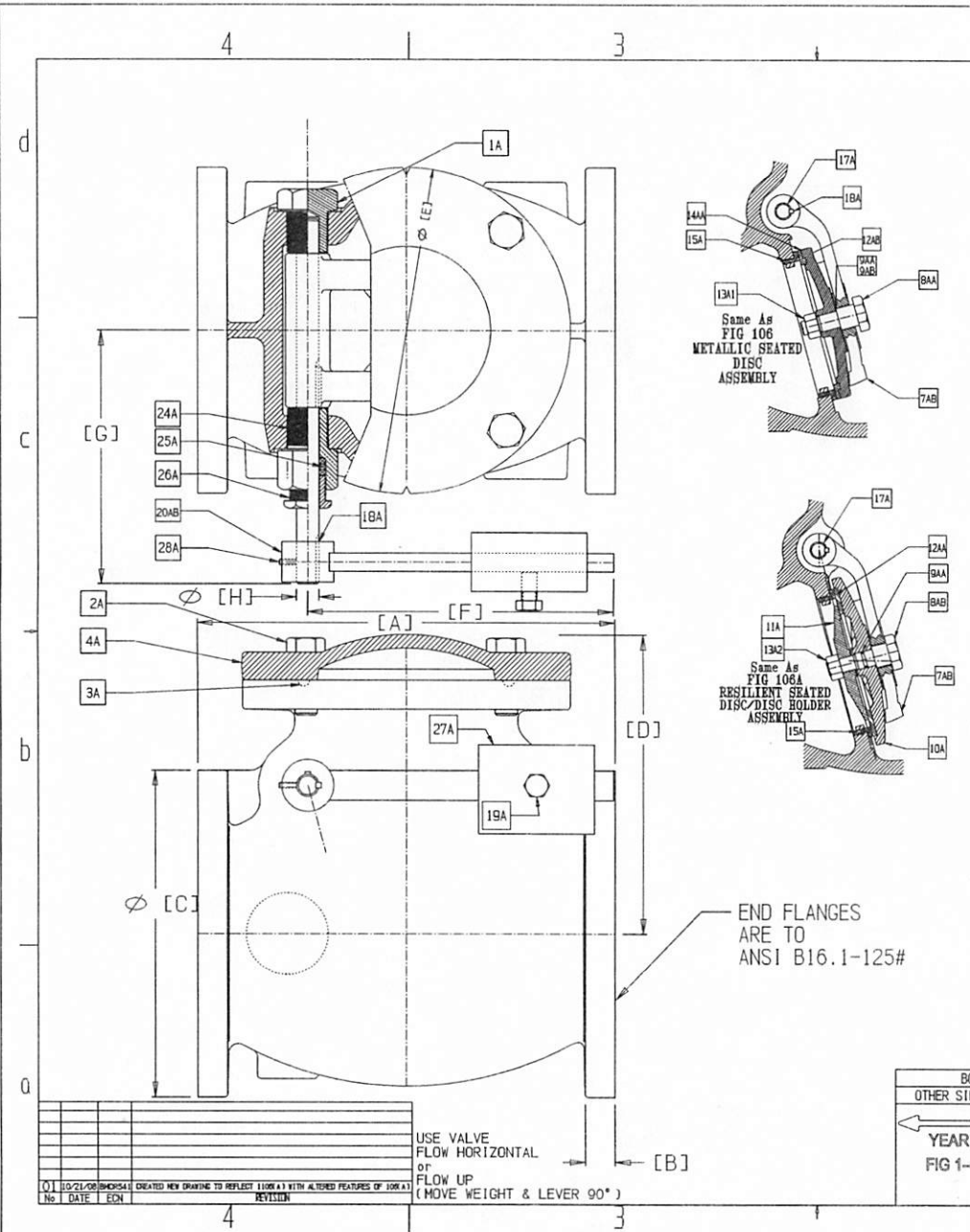
FIG 1107(A)-LEVER & SPRING CHECK WITH  
OPTIONAL LEVER & SPRING SHOWN

Drawn by: BES  
Issued: 10/21/08

SCALE Do Not

REV. NO. 54227 LS  
REVISION 01

NO	DATE	ECN	REVISION
01	10/21/08	0MCR541	CREATED NEW DRAWING TO REFLECT 1106(A) WITH ALTERED FEATURES OF 106(A)



NO.	QTY.	PART DESCRIPTION	MATERIAL	NOTES
1A	1	SIDE PLUG	BRONZE	-
2A	A/R	HEX BOLT	18-8 S.S.	ASTM F593C
3A	1	O-RING	SYN. RUB.	ASTM A 1208
4A	1	CHECK VALVE CAP	GRAY CAST IRON	ASTM A 1208
5A	1	BODY	GRAY CAST IRON	-
8AA	1	DISC BOLT-FIG 1106 (Metal to Metal)	BRONZE	Sizes 10" & 12" FIG 106
8AA	1	-	STEEL	Sizes 4"-8" FIG 106
8AB	1	DISC BOLT-FIG 1106A (Resilient)	BRONZE	(N/A Sizes 2"-3" INTERNAL W/ DISC)
				Sizes 4"-12" FIG 106A
9AA	1	DISC BOLT O-RING	BUNA-N	(N/A Sizes 2"-3" INTERNAL W/ DISC)
9AA	1	FIG 1106A DISC BOLT O-RING	BUNA	Sizes 10" & 12"
9AA	1	FIG 1106A DISC BOLT O-RING	FIBRE	(N/A Sizes 2"-3")
9AA	1	FIG 1106A DISC BOLT O-RING	FIBRE	Sizes 4"-8"
10A	1	FIG 1106A-DISC HOLDER	GRAY CAST IRON	Sizes 4" - 12" (ex. 8")
			DUCTILE IRON	8" size
10A	1	FIG 1106A DISC HOLDER with INTERNAL BOLT	BRONZE	Sizes 4"-3"
11A	1	FIG 1106A-DISC PLATE	BRONZE	-
12AB	1	FIG 1106A - REPLACES RUBER DISC	PLASTIC	-
12AB	1	FIG 1106-DISC WITH INTERNAL BRONZE RING	GRAY CAST IRON	Sizes 4"-12" FIG 106
12AB	1	FIG 1106 DISC w/ INTERNAL BOLT & RING	BRONZE	Sizes 2"-3"
13A	1	FIG 1106 HEX NUT-DISC	STEEL - PLATED	Sizes 2" - 12" Metal to Metal
13A2	1	FIG 1106A HEX NUT-DISC HOLDER	BRONZE	2 NUTS for SIZES 2"-3" FIG 106A
14AA	1	FIG 1106 DISC RING-INTERNAL WITH DISC	BRONZE	Sizes 4"-12"
				(2 - 3" SOLID BRONZE DISC)
15A	1	SEAT RING	BRONZE	ASTM B584 CD4844 to ANNA 'A'
18A	2	KEY	STEEL, PLATED	-
19A	1	SET SCREW FOR WEIGHT	STEEL	-
20AB	1	LEVER ARM (FOR L/W)	STEEL	-
24A	1	SIDE PLUG STUFFING BOX	BRONZE	B16
25A	-	PACKING	NON ASBESTOS	-
26A	1	GLAND	BRONZE	B16
27A	1	WEIGHT	GRAY CAST IRON	ASTM A 1208
28A	1	LEVER SET SCREW	STEEL	-

**NOTE**

FIGURE 1107(A) UTILIZE THE UL/FM VERSION CHECK VALVE BODY TO ACHIEVE THE SHORTER END TO END LENGTHS. THE 1107(A) VALVES UTILIZE THE SAME COMPONENTS (LEVER SPRING OR WEIGHT) AS THE REGULAR A.W.W.A. VERSION CHECK VALVE. ALL BODY MARKINGS (UL, FM AND ANNA) WILL NOT BE PRESENT ON THE CASTINGS.

SIZE	DA LG	FLG THK	FLG OD	DA HT	COVER OD	LEVER LG	CL. to LG	PIN END	PIN DIA	WALL THK	CL. TO OUTSIDE WEIGHT
2	12	10	0.72	7	6.63	7	6	4.94	0.50	0.41	6.6
3	10.25	0.78	7.5	7.06	7.5	6	5.35	0.50	0.44	7.4	
4	13	1.00	9	8.31	9	8.25	8.19	0.63	0.50	10.1	
6	16	1.06	11	10.06	11	10.25	9	0.75	0.62	10.9	
8	19	1.25	13.5	12.38	13.5	14.5	10.19	0.88	0.75	12.4	
10	22	1.31	16	13.93	16.75	18	11.63	1.00	0.81	14.7	
12	26	1.38	19	16.18	19	18	13.75	1.00	0.88	16.0	

BODY MARKING		KENNEDY VALVE	
OTHER SIDE	THIS SIDE	ELMIRA, N.Y. 14901	
← YEAR	→ KENNEDY	FIG. 1107(A)-LEVER & WEIGHT CHECK WITH	
FIG 1--	Size-175	OPTIONAL LEVER & WEIGHT SHOWN	
Drawn by: BES		Scale: No Not	ENG NO: 54227 LW
Issued: 10/21/08		REVISION 01	