

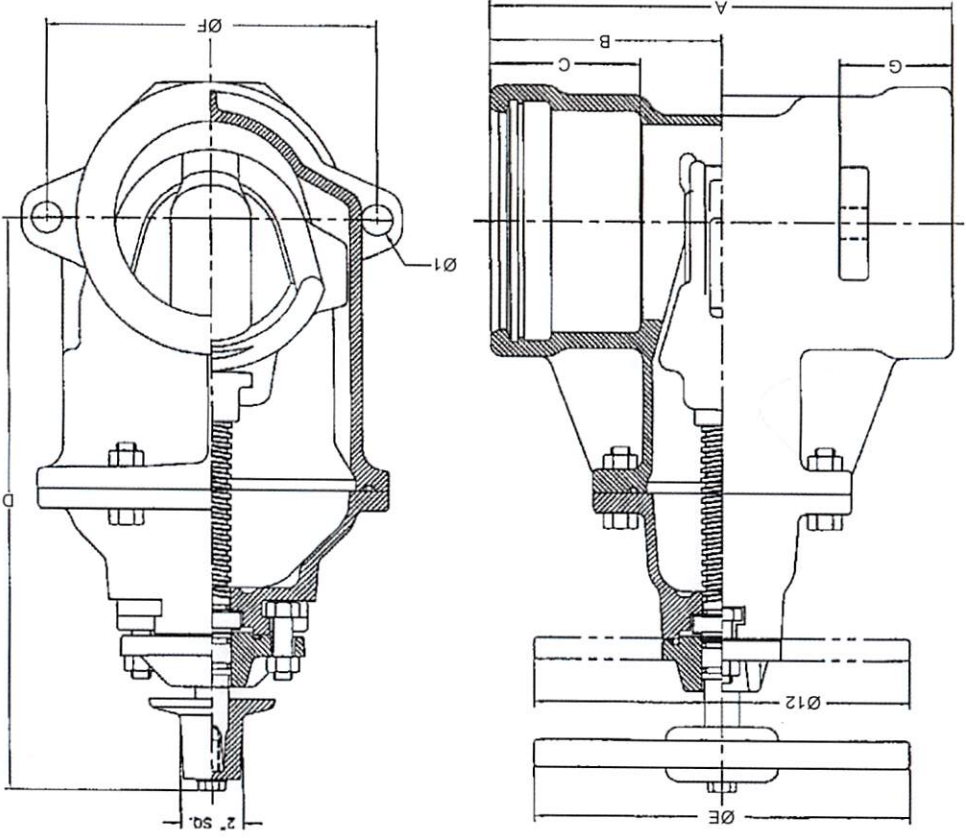


KENNEDY VALVE

C515 KS RW NON-RISING RESILIENT SEATED GATE VALVE TYTON ENDS SIZES 4" - 12"

Fig. 7901SS

Fig. 7901PSS (with post plate)



DIMENSIONS

SIZE	A	B	C	D	E	F	G	Weight (lbs.)
4	13-1/4"	6-5/8"	4.34	14-3/4"	10"	8-3/16"	3-3/4"	82
6	14-3/4"	7-3/8"	4.75	19"	12"	10-7/8"	3-3/4"	139
8	17-1/8"	8-9/16"	5.70	22-1/2"	14"	12-7/8"	4-1/2"	216
10	19-3/8"	9-11/16"	6.19	26-1/2"	18"	15-15/16"	5-1/8"	359
12	20-7/8"	10-7/16"	6.19	30"	18"	17-7/16"	5-3/8"	501

Note: Add 16 lbs. for Indicator Post Plate